

LEA Name : Wyalusing Area SD
Address : 42 Main St
Wyalusing , PA 18853

County : Bradford
AUN Number : 117089003
LEA Type : SD

Annual Financial Report Accuracy Certification Statement

For Fiscal Year Ending
6/30/2016

Pennsylvania Department of Education
&
Office of Comptroller Operations

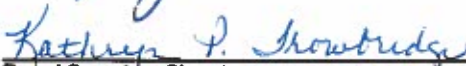
PDE-2056: Intermediate Unit
PDE-2057: School District, AVTS/CTC, Charter School,
and Special Program Jointure

CERTIFICATION: By signing this page I agree that the electronic data submitted is a complete and accurate statement of the financial operations and status of the local education agency for the fiscal year. It has been prepared in accordance with generally accepted accounting principles and established Commonwealth of PA reporting guidelines.



Chief School Administrator Signature

Date 12/9/16



Board Secretary Signature

Date 12/9/16

Stephanie Heller

(570)746-1600

Ext :25

Contact Person

Contact Person Telephone Number

sheller@wyalusingrams.com

(570)746-9156

Contact Person E-mail Address

Contact Person Fax Number

Audit Certification
Annual Financial Report:
For Fiscal Year Ending 6/30/2016
(Pursuant to PA School Code Section 218(b))

LEA Name : Wyalusing Area SD
AUN Number : 117089003
County : Bradford

Audit Certification Due: 12/31/2016

This certification is applicable to:


- Orig. Annual Financial Report submitted to**
Comptroller Operations: 12-2-16
Date
- Annual Financial Report revisions submitted on:** _____
Date

Auditing Firm: BUFFAMANTE WHIPPLE BUTTARARO, P.C.
130 SOUTH UNION STREET
OLEAN, NY 14760

Auditor Contact Name: DAVID V. DITANNA
Auditor Phone: (716) 372-1620
Auditor E-mail: DVD@BWBCPA.COM

CERTIFICATION: By signing this page I agree that the financial statements of the school have been properly audited as noted above pursuant to Article XXIV, and in the auditor's professional opinion, the Annual Financial Report (PDE-2057) submitted on the date referenced is materially consistent with the audited financial statements.

Chief School Administrator


Signature _____ Date 12/9/16

Board Secretary


Signature _____ Date 12/9/16

Stephanie Heller

Contact Person

sheller@wyalusingrams.com

Contact Person E-mail Address

(570)746-1600

Ext :25

Contact Person Telephone Number

(570)746-9156

Contact Person Fax Number

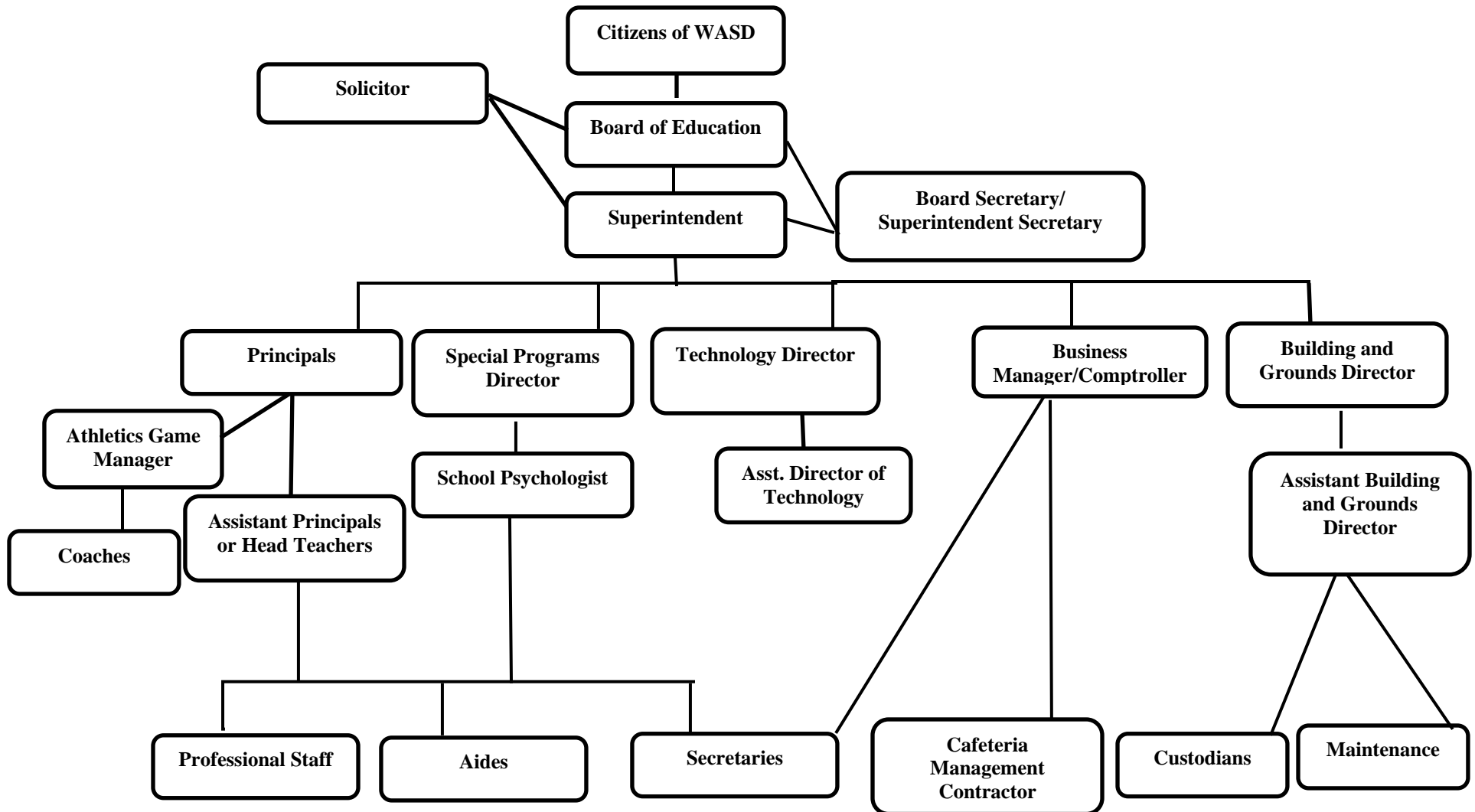
SECTION: LOCAL BOARD PROCEDURES

TITLE: ORGANIZATION CHART

ADOPTED: June 14, 2004

REVISED: April 11, 2016

WYALUSING AREA SCHOOL DISTRICT



008. ORGANIZATIONAL CHART - Pg. 2

The Superintendent shall complete evaluations of the Principals, Assistant Principals, Special Education Director, School Psychologist, Technology Director, Business Manager/Comptroller, Buildings and Grounds Director, and Assistant Buildings and Grounds Director.

<u>Val Number</u>	<u>Description</u>	<u>Justification</u>
12195	REG: Current Year AFR Beginning Fund Balance must equal Prior Year AFR Ending Fund Balance. Justifications to this error must fully explain the situation that prompted a fund balance restatement. "Auditor Adjustment" is not a sufficient justification. Total Govt Funds, Beg Bal: \$1,954,722.00 PY Ending Bal, Govt Funds: \$2,613,356.00	Prior period adjustment recorded to reflect transportation contract payable for \$222,498. In addition a contract was settled awarding retroactive salaries in the amount of \$436,260. The remaining \$124 was related to interest on capital reserves.
12196	REG - Fund 10: Current Year AFR Beginning Fund Balance must equal Prior Year AFR Ending Fund Balance. Justifications to this error must fully explain the situation that prompted a fund balance restatement. "Auditor Adjustment" is not a sufficient justification. REG Fund 10, Beg Fund Bal: \$1,748,462.00 PY Ending Fund Balance: \$2,407,220.00	Prior period adjustment recorded to reflect transportation contract payable for \$222,498. In addition a contract was settled awarding retroactive salaries in the amount of \$436,260.
12206	REG - Fund 32: Current Year AFR Beginning Fund Balance must equal Prior Year AFR Ending Fund Balance. Justifications to this error must fully explain the situation that prompted a fund balance restatement. "Auditor Adjustment" is not a sufficient justification. REG Fund 32, Beg Fund Bal: \$206,260.00 PY Ending Fund Balance: \$206,136.00	The \$124 was related to interest on capital reserves.
30501	Revenue Detail: AFR amount must equal or exceed PDE FAI System amount. 7311, AFR Rev Detail: 1080773.66 7311, PDE FAI System: \$1,092,645.66	Receivable in the amount of \$11,872 recorded June 30, 2015.
30720	A large variance exists between federal revenues (8000's & 6830's) and federal expenditures reported in the General Fund. NOTE: IDEA pass thru, Medical Access, and QSCB/QZAB funded expenditures should be reported as federal expenditures. Correct data or enter a justification. General Fund Federal Revenues: \$648,085.54 General Fund Federal Expenditures: \$866,535.84	Federal Programs expenditures were not all reimbursable to equal grant amount.
50250	SOIN: No ending long term liability has been reported for Governmental Fund - Other Post Employment Benefits (OPEB). Correct data or verify that the LEA does not offer any type of OPEB to employees.	During the current year the contract was settled and the district plans to evaluate if OPEB does exist.

Amounts Expressed in Whole Dollars

	<u>General Fund</u> <u>(10)</u>	<u>Public Purpose Trust</u> <u>(27)</u>	<u>Other Compt Approved</u> <u>(28)</u>	<u>Athletic / Activity</u> <u>(29)</u>	<u>Capital Reserve (690.</u> <u>1850)</u> <u>(31)</u>
Assets And Deferred Outflows Of Resources					
Assets					
0100 Cash and Cash Equivalents	520,919				
0110 Investments	1,622,766				
0120 Taxes Receivable	852,921				
0130 Due From Other Funds	1,756				
0141 Due From Other Governments	57,866				
0142 State Revenue Receivable	1,218,767				
0143 Federal Revenue Receivable	415,852				
0145 Other Intergovernmental Revenue Receivable					
0146 Due from Primary Government					
0147 Due from Component Unit					
0150 Other Receivables	(838)				
0170 Inventories					
0180 Prepaid Expenses (Expenditures)					
0190 Other Current Assets					
Total Assets	\$4,690,009				
0910 Deferred Outflows of Resources					
Total Assets And Deferred Outflows Of Resources	\$4,690,009				

Amounts Expressed in Whole Dollars

	<u>Capital Reserve (1431)</u> <u>(32)</u>	<u>Other Capital Projects</u> <u>Fund</u> <u>(39)</u>	<u>Debt Service</u> <u>(40)</u>	<u>Permanent</u> <u>(90)</u>	<u>Total Governmental</u> <u>Funds</u>
Assets And Deferred Outflows Of Resources					
Assets					
0100 Cash and Cash Equivalents	42,838				563,757
0110 Investments	100,267				1,723,033
0120 Taxes Receivable					852,921
0130 Due From Other Funds					1,756
0141 Due From Other Governments					57,866
0142 State Revenue Receivable					1,218,767
0143 Federal Revenue Receivable					415,852
0145 Other Intergovernmental Revenue Receivable					
0146 Due from Primary Government					
0147 Due from Component Unit					
0150 Other Receivables					(838)
0170 Inventories					
0180 Prepaid Expenses (Expenditures)					
0190 Other Current Assets					
Total Assets	\$143,105				\$4,833,114
0910 Deferred Outflows of Resources					
Total Assets And Deferred Outflows Of Resources	\$143,105				\$4,833,114

Amounts Expressed in Whole Dollars

<u>General Fund</u>	<u>Public Purpose Trust</u>	<u>Other Compt Approved</u>	<u>Athletic / Activity</u>	<u>Capital Reserve (690.</u>
<u>(10)</u>	<u>(27)</u>	<u>(28)</u>	<u>(29)</u>	<u>1850)</u>
				<u>(31)</u>

Liabilities And Deferred Inflows Of Resources And Fund Balances

Liabilities

0400 Due to Other Funds	
0411 Due to Other Governments	
0412 Due to Primary Government	
0413 Due to Component Unit	
0420 Accounts Payable	497,023
0430 Contracts Payable	
0440 Current Portion of Long-Term Debt	
0450 Short-Term Payables	
0461 Accrued Salaries and Benefits	1,847,797
0462 Payroll Deductions and Withholding	
0480 Unearned Revenues	125
0490 Other Current Liabilities	

Total Liabilities \$2,344,945

0950 Deferred Inflows of Resources	329,000
------------------------------------	---------

Fund Balances

0810 Nonspendable Fund Balance	
0820 Restricted Fund Balance	
0830 Committed Fund Balance	
0840 Assigned Fund Balance	
0850 Unassigned Fund Balance	2,016,064

Total Fund Balances \$2,016,064

Total Liabilities, Deferred Inflows Of Resources And Fund Balances \$4,690,009

Amounts Expressed in Whole Dollars

	<u>Capital Reserve (1431)</u> <u>(32)</u>	<u>Other Capital Projects</u> <u>Fund</u> <u>(39)</u>	<u>Debt Service</u> <u>(40)</u>	<u>Permanent</u> <u>(90)</u>	<u>Total Governmental</u> <u>Funds</u>
Liabilities And Deferred Inflows Of Resources And Fund Balances					
Liabilities					
0400 Due to Other Funds					
0411 Due to Other Governments					
0412 Due to Primary Government					
0413 Due to Component Unit					
0420 Accounts Payable	25,000				522,023
0430 Contracts Payable					
0440 Current Portion of Long-Term Debt					
0450 Short-Term Payables					
0461 Accrued Salaries and Benefits					1,847,797
0462 Payroll Deductions and Withholding					
0480 Unearned Revenues					125
0490 Other Current Liabilities					
Total Liabilities	\$25,000				\$2,369,945
0950 Deferred Inflows of Resources					329,000
Fund Balances					
0810 Nonspendable Fund Balance					
0820 Restricted Fund Balance					
0830 Committed Fund Balance					
0840 Assigned Fund Balance	118,105				118,105
0850 Unassigned Fund Balance					2,016,064
Total Fund Balances	\$118,105				\$2,134,169
Total Liabilities, Deferred Inflows Of Resources And Fund Balances	\$143,105				\$4,833,114

Amounts Expressed in Whole Dollars	<u>General Fund</u> <u>(10)</u>	<u>Public Purpose Trust</u> <u>(27)</u>	<u>Other Compt Approved</u> <u>(28)</u>	<u>Athletic / Activity</u> <u>(29)</u>	<u>Capital Reserve (690.</u> <u>1850)</u> <u>(31)</u>
Revenues					
6000 Revenue from Local Sources	9,501,644				
7000 Revenue from State Sources	11,587,608				
8000 Revenue from Federal Sources	430,931				
Total Revenues	\$21,520,183				
Expenditures					
1000 Instruction	11,860,582				
2000 Support Services	6,449,404				
3000 Operation of Non-Instructional Services	388,017				
4000 Facilities Acquisition, Construction and Improvement Services					
5110 Debt Service	2,554,573				
5130 Refund of Prior Year Revenues / Receipts	5				
5140 Short-Term Borrowing – Interest and Costs					
Total Expenditures	\$21,252,581				
Excess (Deficiency) Of Revenues Over Expenditures	\$267,602				
Other Financing Sources (Uses)					
9110 Face Value of Bonds Issued					
9120 Proceeds from Refunding of Bonds	4,725,776				
9130 Bond Premiums					
9200 Proceeds from Extended-Term Financing					
9300 Interfund Transfers - IN					
9400 Sale of or Compensation for Loss of Fixed Assets					
9710 Transfers from Component Units					
9720 Transfers from Primary Governments					
9910 Other Financing Sources Not Listed in the 9000 Series					
9990 Insurance Recoveries					
5120 Debt Service – Refunded Bonds	4,725,776				
5150 Bond Discounts					
5200 Interfund Transfers – Out					
5300 Transfers Out to Component Units/Primary Governments					
Total Other Financing Sources (Uses)	\$0				

Amounts Expressed in Whole Dollars	<u>Capital Reserve (1431)</u> <u>(32)</u>	<u>Other Capital Projects</u> <u>Fund</u> <u>(39)</u>	<u>Debt Service</u> <u>(40)</u>	<u>Permanent</u> <u>(90)</u>	<u>Total Governmental</u> <u>Funds</u>
Revenues					
6000 Revenue from Local Sources					9,501,644
7000 Revenue from State Sources					11,587,608
8000 Revenue from Federal Sources					430,931
Total Revenues					\$21,520,183
Expenditures					
1000 Instruction					11,860,582
2000 Support Services					6,449,404
3000 Operation of Non-Instructional Services					388,017
4000 Facilities Acquisition, Construction and Improvement Services	88,155				88,155
5110 Debt Service					2,554,573
5130 Refund of Prior Year Revenues / Receipts					5
5140 Short-Term Borrowing – Interest and Costs					
Total Expenditures	\$88,155				\$21,340,736
Excess (Deficiency) Of Revenues Over Expenditures	(\$88,155)				\$179,447
Other Financing Sources (Uses)					
9110 Face Value of Bonds Issued					
9120 Proceeds from Refunding of Bonds					4,725,776
9130 Bond Premiums					
9200 Proceeds from Extended-Term Financing					
9300 Interfund Transfers - IN					
9400 Sale of or Compensation for Loss of Fixed Assets					
9710 Transfers from Component Units					
9720 Transfers from Primary Governments					
9910 Other Financing Sources Not Listed in the 9000 Series					
9990 Insurance Recoveries					
5120 Debt Service – Refunded Bonds					4,725,776
5150 Bond Discounts					
5200 Interfund Transfers – Out					
5300 Transfers Out to Component Units/Primary Governments					
Total Other Financing Sources (Uses)					\$0

Amounts Expressed in Whole Dollars	<u>General Fund</u> <u>(10)</u>	<u>Public Purpose Trust</u> <u>(27)</u>	<u>Other Compt Approved</u> <u>(28)</u>	<u>Athletic / Activity</u> <u>(29)</u>	<u>Capital Reserve</u> <u>(690.</u> <u>1850)</u> <u>(31)</u>
Special And Extraordinary Items					
9920 Special Items – Gains					
9930 Extraordinary Items – Gains					
5520 Special Items – Losses					
5530 Extraordinary Items – Losses					
Net Change In Fund Balances	\$267,602				
Fund Balance					
0001 Fund Balance - Beginning of Fiscal Year	1,748,462				
Fund Balance - End Of Year	\$2,016,064				

Amounts Expressed in Whole Dollars	<u>Capital Reserve (1431)</u> <u>(32)</u>	<u>Other Capital Projects</u> <u>Fund</u> <u>(39)</u>	<u>Debt Service</u> <u>(40)</u>	<u>Permanent</u> <u>(90)</u>	<u>Total Governmental</u> <u>Funds</u>
Special And Extraordinary Items					
9920 Special Items – Gains					
9930 Extraordinary Items – Gains					
5520 Special Items – Losses					
5530 Extraordinary Items – Losses					
Net Change In Fund Balances	(\$88,155)				\$179,447
Fund Balance					
0001 Fund Balance - Beginning of Fiscal Year		206,260			1,954,722
Fund Balance - End Of Year		\$118,105			\$2,134,169

Amounts Expressed in Whole Dollars	<u>Food Service</u> <u>(51)</u>	<u>Child Care</u> <u>Operations</u> <u>(52)</u>	<u>Other Enterprise</u> <u>(58)</u>	<u>TOTAL</u>	<u>Internal Service</u> <u>(60)</u>
Assets And Deferred Outflows Of Resources					
Current Assets					
0100 Cash and Cash Equivalents	149,026			149,026	
0110 Investments					
0130 Due From Other Funds					
0141 Due From Other Governments					
0142 State Revenue Receivable	2,712			2,712	
0143 Federal Revenue Receivable	43,055			43,055	
0146 Due from Primary Government					
0147 Due from Component Unit					
0150 Other Receivables					
0170 Inventories	13,604			13,604	
0180 Prepaid Expenses (Expenditures)					
0190 Other Current Assets					
Total Current Assets	\$208,397			\$208,397	
Noncurrent Assets					
0211 Land					
0212 Site Improvements (Net)					
0220 Buildings and Building Improvements (Net)					
0230 Machinery, Equipment and Furniture (Net)	299,645			299,645	
0250 Construction in Progress					
0260 Long Term Prepayments					
0290 Other Noncurrent Assets					
Total Noncurrent Assets	\$299,645			\$299,645	
0910 Deferred Outflows of Resources					
Total Assets And Deferred Outflows Of Resources	\$508,042			\$508,042	

Amounts Expressed in Whole Dollars	<u>Food Service</u> <u>(51)</u>	<u>Child Care</u> <u>Operations</u> <u>(52)</u>	<u>Other Enterprise</u> <u>(58)</u>	<u>TOTAL</u>	<u>Internal Service</u> <u>(60)</u>
Liabilities And Deferred Inflows Of Resources And Net Position					
Current Liabilities					
0400 Due to Other Funds	1,756			1,756	
0411 Due to Other Governments					
0413 Due to Component Unit					
0420 Accounts Payable	12,470			12,470	
0430 Contracts Payable					
0440 Current Portion of Long-Term Debt					
0450 Short-Term Payables					
0461 Accrued Salaries and Benefits					
0462 Payroll Deductions and Withholding					
0480 Unearned Revenues	13,604			13,604	
0490 Other Current Liabilities					
Total Current Liabilities	\$27,830			\$27,830	
Noncurrent Liabilities					
0510 Bonds Payable					
0520 Extended-Term Financing Agreements Payable					
0530 Lease-Purchase Obligations					
0540 Accumulated Compensated Absences					
0550 Authority Lease Obligations					
0560 Other Post-Employment Benefits (OPEB)					
0570 Net Pension Liability					
0599 Other Long-Term Liabilities					
Total Noncurrent Liabilities					
Total Liabilities	\$27,830			\$27,830	
0950 Deferred Inflows of Resources					
Net Position					
0791 Invested in Capital Assets, Net of Related Debt	299,645			299,645	
0008 Restricted Net Position (0792 – 0798)					
0799 Unrestricted Net Position	180,567			180,567	
Total Net Position	\$480,212			\$480,212	
Total Liabilities And Deferred Inflows Of Resources And Net Position	\$508,042			\$508,042	

Amounts Expressed in Whole Dollars	<u>Food Service</u> <u>(51)</u>	<u>Child Care Operations</u> <u>(52)</u>	<u>Other Enterprise</u> <u>(58)</u>	<u>TOTAL</u>	<u>Internal Service</u> <u>(60)</u>
Operating Revenues					
6600 Food Service Revenue	193,776			193,776	
0071 Charges for Services					
0072 Other Operating Revenue					
Total Operating Revenues	\$193,776			\$193,776	
Operating Expenses					
100 Personnel Services – Salaries					
200 Personnel Services – Employee Benefits	2,203			2,203	
300 Purchased Professional and Technical Services					
400 Purchased Property Services	2,227			2,227	
500 Other Purchased Services					
600 Supplies	482,536			482,536	
740 Depreciation	30,842			30,842	
810 Dues and Fees					
890 Miscellaneous Expenditures	10,724			10,724	
Total Operating Expenses	\$528,532			\$528,532	
Operating Income (Loss)	(\$334,756)			(\$334,756)	
Non Operating Revenues (Expenses)					
6500 Earnings on Investments	37			37	
6920 Contributions and Donations from Private Sources					
6930 Gains or Losses on Sale of Fixed Assets					
6991 Refunds of a Prior Year Expenditure					
7000 Revenue from State Sources	21,790			21,790	
8000 Revenue from Federal Sources	377,966			377,966	
820 Claims and Judgments Against the LEA					
830 Interest					
TOTAL Non Operating Revenues (Expenses)	\$399,793			\$399,793	
Income (Loss) Before Contributions And Transfers	\$65,037			\$65,037	

Amounts Expressed in Whole Dollars	<u>Food Service</u> <u>(51)</u>	<u>Child Care Operations</u> <u>(52)</u>	<u>Other Enterprise</u> <u>(58)</u>	<u>TOTAL</u>	<u>Internal Service</u> <u>(60)</u>
Contributions, Transfers, and Special and Extraordinary Items					
5200 Interfund Transfers – Out					
5300 Transfers Out to Component Units/Primary Governments					
5520 Special Items – Losses					
5530 Extraordinary Items – Losses					
9300 Interfund Transfers - IN					
9500 Capital Contributions					
9700 Transfers IN From Component Units/Primary Governments					
9920 Special Items – Gains					
9930 Extraordinary Items – Gains					
Change In Net Position	\$65,037			\$65,037	
0002 Net Position - Beginning of Fiscal Year	415,175			415,175	
0003 Accounting Changes / Residual Equity Transfers					
Net Position - End Of Year	\$480,212			\$480,212	

Amounts Expressed in Whole Dollars	<u>Food Service</u> <u>(51)</u>	<u>Child Care Operations</u> <u>(52)</u>	<u>Other Enterprise</u> <u>(58)</u>	<u>TOTAL</u>	<u>Internal Service(60)</u>
Cash Flows From Operating Activities					
0011 Cash Receipts From Users	193,776			193,776	
0012 Cash Receipts From Assessments Made to Other Funds					
0013 Cash Receipts From Earnings on Investments					
0014 Cash Receipts From Other Operating Revenue					
0015 Cash Payments To Employees For Services					
0016 Cash Payments For Insurance Claims					
0017 Cash Payments To Suppliers For Goods and Services	458,738			458,738	
0018 Cash Payments For Other Operating Expenses					
Net Cash Provided By (Used For) Operating Activities	(\$264,962)			(\$264,962)	
Cash Flows From Non-Capital Financing Activities					
0021 Receipts From Local Sources - 6000					
0022 Receipts From State Sources - 7000	22,062			22,062	
0023 Receipts From Federal Sources -8000	339,638			339,638	
0024 Notes and Loans Received (Repaid)					
0025 Interest Paid on Notes/Loans - 5100-830					
0026 Operating Transfers In (Out)/Residual Equity Trans					
0027 Operating Transfers In (Out) Primary Government / Comp Unit					
0028 Receipts From Refund of Prior Year Expenditures - 6991					
0029 Special and Extraordinary Gains (losses)					
Net Cash Prov By (Used for) Non-Capital Financing Activities	\$361,700			\$361,700	
Cash Flows From Capital and Related Financing Activities					
0031 Payments For Fac Acq, Const, and Imp - 4000	(3,770)			(3,770)	
0032 Gain / (Loss) on Sale of Fixed Assets - 6930					
0033 Proceeds From Extended Term Financing - 9200					
0034 Principal Paid on Financing Agreements					
0035 Interest Paid on Financing Agreements - 5100-830					
0036 (Inc) Dec in Contributed Capital					
Net Cash Prov By (Used for) Capital and Related Financing Activities	(\$3,770)			(\$3,770)	
Cash Flows From Investing Activities					
0041 Earnings on Investments - 6500	37			37	
0042 Purchase of Inv Securities / Deposits to Inv Pools					
0043 Receipts From Investment Pool Withdrawals					
0044 Proceeds from Sale and Maturity of Inv Securities					
0045 Loans Received (Paid)					
Net Cash Prov By (Used for) Investing Activities	\$37			\$37	

LEA : 117089003 Wyalusing Area SD

Printed 6/20/2017 10:49:14 AM

	<u>Food Service</u> <u>(51)</u>	<u>Child Care Operations</u> <u>(52)</u>	<u>Other Enterprise</u> <u>(58)</u>	<u>TOTAL</u>	<u>Internal Service</u> <u>(60)</u>
Net Increase (Decrease) in Cash Flows	93,005			93,005	
0004 Cash and Cash Equivalents Beginning of Year	56,021			56,021	
Cash and Cash Equivalents at Year End	\$149,026			\$149,026	
<hr/>					
Reconciliation of Operating Income (Loss) To Net Cash Provided by (Used For) Operating Activities					
0005 Operating Income (Loss) per REP	(334,756)			(334,756)	
Adjustments					
0051 Depreciation and Net Amortization	30,842			30,842	
0052 Provision for Uncollectible Accounts					
0053 Other Adjustments	38,855			38,855	
Effect of Changes in Assets, Liabilities, Deferred Outflows and Deferred Inflows					
0054 (Inc) Dec In Accounts Receivable (0120-0150)					
0055 Advances to Other Funds (0160)					
0056 (Inc) Dec in Inventories (0170)	(7,553)			(7,553)	
0057 (Inc) Dec in Prepaid Expenses (0180)					
0058 (Inc) Dec in Other Current or Noncurrent Assets					
0064 Deferred Outflows (0910)					
0059 Inc (Dec) in Accounts Payable (0400-0450)	97			97	
0060 Inc (Dec) in Accrued Salaries/Benefits (0461)					
0065 Inc (Dec) in Net Pension Liabilities (0570)					
0066 Inc (Dec) in Other Postemp Benefit Oblig (0560)					
0061 Inc (Dec) in Payroll Deductions/Withholding (0462)					
0062 Inc (Dec) in Unearned Revenue (0480)	7,553			7,553	
0063 Inc (Dec) in Other Current or Noncurrent Liabilities					
0067 Deferred Inflows (0950)					
Total Adjustments	\$69,794			\$69,794	
Cash Provided By (Used for) Total	(\$264,962)			(\$264,962)	

COMBINED STATEMENT OF CASH FLOWS
SCHEDULE OF NONCASH INVESTING, CAPITAL, AND FINANCING ACTIVITIES

Explanation of Transaction and Balance Sheet Effect	Amount
Total	

LEA : 117089003 Wyalusing Area SD

Printed 6/20/2017 10:49:14 AM

Amounts Expressed in Whole Dollars

	<u>Private Purpose Trust</u> (71)	<u>Investment Trust</u> (72)	<u>Pension Trust</u> (73)	<u>Activity</u> (81)
Assets And Deferred Outflows Of Resources				
Assets				
0100 Cash and Cash Equivalents	2,761			
0110 Investments	32,522			166,438
0130 Due From Other Funds				
0147 Due from Component Unit				
0150 Other Receivables				
0170 Inventories				
0180 Prepaid Expenses (Expenditures)				
0190 Other Current Assets				
0220 Buildings and Building Improvements (Net)				
0230 Machinery, Equipment and Furniture (Net)				
Total Assets	\$35,283			\$166,438
0910 Deferred Outflows of Resources				
Total Assets And Deferred Outflows Of Resources	\$35,283			\$166,438

LEA : 117089003 Wyalusing Area SD

Printed 6/20/2017 10:49:14 AM

Amounts Expressed in Whole Dollars

	<u>Other Agency</u> <u>(89)</u>	<u>Discrete Component Units</u> <u>(98)</u>	<u>Discrete Component Units</u> <u>(99)</u>	<u>Total Fiduciary Funds</u>
Assets And Deferred Outflows Of Resources				
Assets				
0100 Cash and Cash Equivalents				2,761
0110 Investments				198,960
0130 Due From Other Funds				
0147 Due from Component Unit				
0150 Other Receivables				
0170 Inventories				
0180 Prepaid Expenses (Expenditures)				
0190 Other Current Assets				
0220 Buildings and Building Improvements (Net)				
0230 Machinery, Equipment and Furniture (Net)				
Total Assets				\$201,721
0910 Deferred Outflows of Resources				
Total Assets And Deferred Outflows Of Resources				\$201,721

LEA : 117089003 Wyalusing Area SD

Printed 6/20/2017 10:49:14 AM

Amounts Expressed in Whole Dollars

Private Purpose Trust
(71)

Investment Trust
(72)

Pension Trust
(73)

Activity
(81)

Liabilities, Deferred Inflows Of Resources And Net Position

Liabilities

0400 Due to Other Funds				
0411 Due to Other Governments				
0412 Due to Primary Government				
0413 Due to Component Unit				
0420 Accounts Payable				
0430 Contracts Payable				
0450 Short-Term Payables				
0461 Accrued Salaries and Benefits				
0462 Payroll Deductions and Withholding				
0480 Unearned Revenues				
0490 Other Current Liabilities				166,438

Total Liabilities **\$166,438**

0950 Deferred Inflows of Resources

Net Position

0791 Invested in Capital Assets, Net of Related Debt	
0009 Restricted Net Position (0792 – 0798)	35,283
0799 Unrestricted Net Position	

Total Net Position **\$35,283**

Total Liabilities, Deferred Inflows Of Resources And Net Position **\$166,438**

LEA : 117089003 Wyalusing Area SD

Printed 6/20/2017 10:49:14 AM

Amounts Expressed in Whole Dollars	<u>Other Agency</u> (89)	<u>Discrete Component Units</u> (98)	<u>Discrete Component Units</u> (99)	<u>Total Fiduciary Funds</u>
Liabilities, Deferred Inflows Of Resources And Net Position				
Liabilities				
0400 Due to Other Funds				
0411 Due to Other Governments				
0412 Due to Primary Government				
0413 Due to Component Unit				
0420 Accounts Payable				
0430 Contracts Payable				
0450 Short-Term Payables				
0461 Accrued Salaries and Benefits				
0462 Payroll Deductions and Withholding				
0480 Unearned Revenues				
0490 Other Current Liabilities				166,438
Total Liabilities				\$166,438
0950 Deferred Inflows of Resources				
Net Position				
0791 Invested in Capital Assets, Net of Related Debt				
0009 Restricted Net Position (0792 – 0798)				35,283
0799 Unrestricted Net Position				
Total Net Position				\$35,283
Total Liabilities, Deferred Inflows Of Resources And Net Position				\$201,721

Amounts Expressed in Whole Dollars	<u>Private Purpose Trust</u> (71)	<u>Investment Trust</u> (72)	<u>Pension Trust</u> (73)	<u>Discrete Component</u> <u>Units</u> (98)	<u>Discrete Component</u> <u>Units</u> (99)	<u>Total Fiduciary</u> <u>Funds</u>
Additions						
0091 Gifts and Contributions						
0092 Other Additions						
Deductions						
0093 Scholarships Awarded						
0094 Other Deductions						
Change In Net Position						
0006 Net Position – Beginning of Fiscal Year		35,283				35,283
0007 Net Position Held in Trust for Pension Benefits						
Net Position - End of Fiscal Year		\$35,283				\$35,283

	<u>Revenue Reported In Current Year</u>	<u>Current Year Tax Accrual</u>	<u>Prior Year Tax Accrual</u>	<u>Taxes Collected In Current Year</u>
<u>Revenue from Local Sources</u>				
6111 Current Real Estate Taxes	6,845,429.43			6,845,429.43
6114 Payments in Lieu of Current Taxes - State / Local	32,936.67			32,936.67
6120 Current Per Capita Taxes, Section 679	26,690.60	5,790.00	3,400.00	24,300.60
6141 Current Act 511 Per Capita Taxes	26,690.60	5,790.00	3,400.00	24,300.60
6151 Current Act 511 Earned Income Taxes	1,466,066.29	296,432.00	254,857.00	1,424,491.29
6153 Current Act 511 Real Estate Transfer Taxes	116,181.43	15,429.00	22,013.00	122,765.43
6411 Delinquent Real Estate Taxes	633,562.52	206,000.00	147,000.00	574,562.52
6420 Delinquent Per Capita Taxes, Section 679	2,024.00			2,024.00
6440 Delinquent Local Enabling Taxes - Flat Rate Assessments	2,024.00			2,024.00
6452 Delinquent Act 511 Occupation Taxes	3,818.65			3,818.65
6500 Earnings on Investments	4,380.00			
6700 Revenues from LEA Activities	62,959.52			
6832 Federal IDEA Revenue Received as Pass Through	217,155.00			
6910 Rentals	24,566.74			
6944 Receipts from Other LEAs in Pennsylvania - Education	19,049.60			
6999 Other Revenues Not Specified Above	18,108.99			
TOTAL Revenue from Local Sources	\$9,501,644.04	\$529,441.00	\$430,670.00	\$9,056,653.19

**Revenue Reported
In Current Year**

Revenue from State Sources

7110 Basic Education Funding	6,714,411.20		
7160 Tuition for Orphans Subsidy	55,245.27		
7250 Migratory Children	86.00		
7271 Special Education funds for School-Aged Pupils	891,072.08		
7311 Pupil Transportation Subsidy	1,080,773.66		
7312 Nonpublic and Charter School Pupil Transportation Subsidy	18,650.28		
7320 Rental and Sinking Fund Payments / Building Reimbursement Subsidy	666,321.00		
7330 Health Services (Medical, Dental, Nurse, Act 25)	24,192.41		
7340 State Property Tax Reduction Allocation	296,897.73		
7505 Ready to Learn Block Grant	216,159.00		
7810 State Share of Social Security and Medicare Taxes	299,404.95		
7820 State Share of Retirement Contributions	1,324,394.11		
TOTAL Revenue from State Sources	\$11,587,607.69		

**Revenue Reported
In Current Year**

Revenue from Federal Sources

8514 NCLB, Title I - Improving the Academic Achievement of the Disadvantaged	295,756.38			
8515 NCLB, Title II - Preparing, Training and Recruiting High Quality Teachers and Principals	89,090.16			
8810 School-Based Access Medicaid Reimbursement Program (SBAP) Reimbursements (Access)	39,774.35			
8820 Medical Assistance Reimbursement for Administrative Claiming (Quarterly) Program	6,309.65			
TOTAL Revenue from Federal Sources	\$430,930.54			

	<u>Revenue Reported In Current Year</u>			
<u>Other Financing Sources</u>				
9120 Proceeds from Refunding of Bonds	4,725,776.00			
TOTAL Other Financing Sources	\$4,725,776.00			
TOTAL FROM ALL SOURCES	\$26,245,958.27	\$529,441.00	\$430,670.00	\$9,056,653.19

Revenue from Local Sources	9,501,644.04
Revenue from State Sources	11,587,607.69
Revenue from Federal Sources	430,930.54
Other Financing Sources	4,725,776.00
TOTAL FROM ALL SOURCES	\$26,245,958.27

General Fund (10)

	<u>Total</u>
1000 Instruction	
100 Personnel Services – Salaries	
100 Personnel Services – Salaries	6,534,985.40
Total Personnel Services – Salaries	\$6,534,985.40
200 Personnel Services – Employee Benefits	
210 Group Insurance – Contracted Provider	1,405,928.86
220 Social Security Contributions	479,306.98
230 PSERS Retirement Contributions	1,642,548.06
250 Unemployment Compensation	20,705.52
260 Workers’ Compensation	28,248.88
270 Group Insurance – Self-Insurance	15,514.06
Total Personnel Services – Employee Benefits	\$3,592,252.36
300 Purchased Professional and Technical Services	
322 Professional Educational Services – Ius	277,307.29
323 Professional Educational Services – Other Educational Agencies	10,752.54
329 Professional Educational Services – Other	35,012.95
330 Other Professional Services	145,528.79
Total Purchased Professional and Technical Services	\$468,601.57
400 Purchased Property Services	
430 Repairs and Maintenance Services	56,198.15
Total Purchased Property Services	\$56,198.15
500 Other Purchased Services	
510 Student Transportation Services	54,069.85
561 Tuition To Other School Districts Within the State	24,421.63
562 Tuition To Pennsylvania Charter Schools	524,531.40
564 Tuition To Career and Technology Centers	327,048.69
568 Tuition To Private Residential Rehabilitative Institutions (PRRI) [In-State] and Detention Centers	38,856.91
569 Tuition – Other	23,129.80
580 Travel	2,600.22
Total Other Purchased Services	\$994,658.50
600 Supplies	
610 General Supplies	106,941.81
640 Books and Periodicals	84,941.95
Total Supplies	\$191,883.76
700 Property	
750 Equipment – Original and Additional	10,589.91
760 Equipment – Replacement	10,361.94
Total Property	\$20,951.85
800 Other Objects	
810 Dues and Fees	1,050.00
Total Other Objects	\$1,050.00
Total 1000 Instruction	\$11,860,581.59

General Fund (10)

1100 Regular Programs – Elementary / Secondary	<u>Elementary</u>	<u>Secondary</u>	<u>Federal</u>	<u>Total</u>
100 Personnel Services – Salaries				
100 Personnel Services – Salaries	2,494,782.75	2,357,188.42	227,626.15	5,079,597.32
Total Personnel Services – Salaries	\$2,494,782.75	\$2,357,188.42	\$227,626.15	\$5,079,597.32
200 Personnel Services – Employee Benefits				
210 Group Insurance – Contracted Provider	510,090.58	408,384.60	81,649.45	1,000,124.63
220 Social Security Contributions	182,322.18	171,995.26	16,807.85	371,125.29
230 PSERS Retirement Contributions	628,566.57	584,624.18	58,032.67	1,271,223.42
250 Unemployment Compensation	17,494.07	1,537.92	217.42	19,249.41
260 Workers' Compensation	6,529.08	12,424.47	1,229.30	20,182.85
270 Group Insurance – Self-Insurance	7,757.03	7,757.03		15,514.06
Total Personnel Services – Employee Benefits	\$1,352,759.51	\$1,186,723.46	\$157,936.69	\$2,697,419.66
300 Purchased Professional and Technical Services				
330 Other Professional Services	22,670.40	9,941.50		32,611.90
Total Purchased Professional and Technical Services	\$22,670.40	\$9,941.50		\$32,611.90
400 Purchased Property Services				
430 Repairs and Maintenance Services	28,300.33	27,351.04		55,651.37
Total Purchased Property Services	\$28,300.33	\$27,351.04		\$55,651.37
500 Other Purchased Services				
510 Student Transportation Services	(3.68)	10,676.10		10,672.42
562 Tuition To Pennsylvania Charter Schools	86,594.27	206,355.12		292,949.39
568 Tuition To Private Residential Rehabilitative Institutions (PRRI) [In-State] and Detention Centers		1,854.00		1,854.00
569 Tuition – Other		23,129.80		23,129.80
580 Travel	235.01	365.55		600.56
Total Other Purchased Services	\$86,825.60	\$242,380.57		\$329,206.17
600 Supplies				
610 General Supplies	40,158.22	46,478.86		86,637.08
640 Books and Periodicals	52,083.99	31,223.24		83,307.23
Total Supplies	\$92,242.21	\$77,702.10		\$169,944.31
700 Property				
750 Equipment – Original and Additional		1,959.58		1,959.58
760 Equipment – Replacement		8,977.03		8,977.03
Total Property		\$10,936.61		\$10,936.61
Total 1100 Regular Programs – Elementary / Secondary	\$4,077,580.80	\$3,912,223.70	\$385,562.84	\$8,375,367.34

General Fund (10)

1110 Regular Programs

	<u>Elementary</u>	<u>Secondary</u>	<u>Federal</u>	<u>Total</u>
100 Personnel Services – Salaries				
100 Personnel Services – Salaries	2,494,782.75	2,357,188.42	227,626.15	5,079,597.32
Total Personnel Services – Salaries	\$2,494,782.75	\$2,357,188.42	\$227,626.15	\$5,079,597.32
200 Personnel Services – Employee Benefits				
210 Group Insurance – Contracted Provider	510,090.58	408,384.60	81,649.45	1,000,124.63
220 Social Security Contributions	182,322.18	171,995.26	16,807.85	371,125.29
230 PSERS Retirement Contributions	628,566.57	584,624.18	58,032.67	1,271,223.42
250 Unemployment Compensation	17,494.07	1,537.92	217.42	19,249.41
260 Workers' Compensation	6,529.08	12,424.47	1,229.30	20,182.85
270 Group Insurance – Self-Insurance	7,757.03	7,757.03		15,514.06
Total Personnel Services – Employee Benefits	\$1,352,759.51	\$1,186,723.46	\$157,936.69	\$2,697,419.66
300 Purchased Professional and Technical Services				
330 Other Professional Services	22,670.40	9,941.50		32,611.90
Total Purchased Professional and Technical Services	\$22,670.40	\$9,941.50		\$32,611.90
400 Purchased Property Services				
430 Repairs and Maintenance Services	28,300.33	27,351.04		55,651.37
Total Purchased Property Services	\$28,300.33	\$27,351.04		\$55,651.37
500 Other Purchased Services				
510 Student Transportation Services	(3.68)	10,676.10		10,672.42
562 Tuition To Pennsylvania Charter Schools	86,594.27	206,355.12		292,949.39
568 Tuition To Private Residential Rehabilitative Institutions (PRRI) [In-State] and Detention Centers		1,854.00		1,854.00
569 Tuition – Other		23,129.80		23,129.80
580 Travel	235.01	365.55		600.56
Total Other Purchased Services	\$86,825.60	\$242,380.57		\$329,206.17
600 Supplies				
610 General Supplies	40,158.22	46,478.86		86,637.08
640 Books and Periodicals	52,083.99	31,223.24		83,307.23
Total Supplies	\$92,242.21	\$77,702.10		\$169,944.31
700 Property				
750 Equipment – Original and Additional		1,959.58		1,959.58
760 Equipment – Replacement		8,977.03		8,977.03
Total Property		\$10,936.61		\$10,936.61
Total 1110 Regular Programs	\$4,077,580.80	\$3,912,223.70	\$385,562.84	\$8,375,367.34

General Fund (10)

1200 Special Programs – Elementary / Secondary	<u>Elementary</u>	<u>Secondary</u>	<u>Federal</u>	<u>Total</u>
100 Personnel Services – Salaries				
100 Personnel Services – Salaries	470,526.63	427,887.48	258,666.06	1,157,080.17
Total Personnel Services – Salaries	\$470,526.63	\$427,887.48	\$258,666.06	\$1,157,080.17
200 Personnel Services – Employee Benefits				
210 Group Insurance – Contracted Provider	111,602.22	119,703.57	103,311.64	334,617.43
220 Social Security Contributions	34,939.19	31,957.37	19,101.79	85,998.35
230 PSERS Retirement Contributions	120,402.91	108,247.84	66,122.58	294,773.33
250 Unemployment Compensation	601.88	411.64	267.63	1,281.15
260 Workers' Compensation	2,747.10	2,311.22	1,396.82	6,455.14
Total Personnel Services – Employee Benefits	\$270,293.30	\$262,631.64	\$190,200.46	\$723,125.40
300 Purchased Professional and Technical Services				
322 Professional Educational Services – lus	65,859.25	192,447.60		258,306.85
329 Professional Educational Services – Other	22,780.00	7,232.95		30,012.95
330 Other Professional Services	81,886.28	30,230.61		112,116.89
Total Purchased Professional and Technical Services	\$170,525.53	\$229,911.16		\$400,436.69
500 Other Purchased Services				
510 Student Transportation Services	8,472.49	20,350.56		28,823.05
561 Tuition To Other School Districts Within the State		24,421.63		24,421.63
562 Tuition To Pennsylvania Charter Schools	66,574.95	165,007.06		231,582.01
580 Travel	726.25	87.33		813.58
Total Other Purchased Services	\$75,773.69	\$209,866.58		\$285,640.27
600 Supplies				
610 General Supplies	3,316.71	4,264.02		7,580.73
640 Books and Periodicals	491.47			491.47
Total Supplies	\$3,808.18	\$4,264.02		\$8,072.20
700 Property				
750 Equipment – Original and Additional	2,690.37	500.00		3,190.37
Total Property	\$2,690.37	\$500.00		\$3,190.37
800 Other Objects				
810 Dues and Fees	525.00	525.00		1,050.00
Total Other Objects	\$525.00	\$525.00		\$1,050.00
Total 1200 Special Programs – Elementary / Secondary	\$994,142.70	\$1,135,585.88	\$448,866.52	\$2,578,595.10

General Fund (10)

1210 Life Skills Support

	<u>Elementary</u>	<u>Secondary</u>	<u>Federal</u>	<u>Total</u>
100 Personnel Services – Salaries				
100 Personnel Services – Salaries	85,457.00	136,844.23		222,301.23
Total Personnel Services – Salaries	\$85,457.00	\$136,844.23		\$222,301.23
200 Personnel Services – Employee Benefits				
210 Group Insurance – Contracted Provider	35,625.60	48,461.25		84,086.85
220 Social Security Contributions	6,342.03	10,242.24		16,584.27
230 PSERS Retirement Contributions	22,086.12	34,240.07		56,326.19
250 Unemployment Compensation	85.44	155.52		240.96
260 Workers' Compensation	490.08	739.13		1,229.21
Total Personnel Services – Employee Benefits	\$64,629.27	\$93,838.21		\$158,467.48
300 Purchased Professional and Technical Services				
322 Professional Educational Services – lus		462.71		462.71
329 Professional Educational Services – Other	40.00	3,440.00		3,480.00
330 Other Professional Services	29,053.16	5,986.21		35,039.37
Total Purchased Professional and Technical Services	\$29,093.16	\$9,888.92		\$38,982.08
500 Other Purchased Services				
510 Student Transportation Services	3,843.03	13,475.55		17,318.58
561 Tuition To Other School Districts Within the State		24,421.63		24,421.63
Total Other Purchased Services	\$3,843.03	\$37,897.18		\$41,740.21
600 Supplies				
610 General Supplies	1,174.71	2,062.16		3,236.87
640 Books and Periodicals	491.47			491.47
Total Supplies	\$1,666.18	\$2,062.16		\$3,728.34
700 Property				
750 Equipment – Original and Additional	299.00			299.00
Total Property	\$299.00			\$299.00
Total 1210 Life Skills Support	\$184,987.64	\$280,530.70		\$465,518.34

General Fund (10)

	<u>Elementary</u>	<u>Secondary</u>	<u>Federal</u>	<u>Total</u>
1220 Sensory Support				
100 Personnel Services – Salaries				
100 Personnel Services – Salaries	50,264.39	8,803.57		59,067.96
Total Personnel Services – Salaries	\$50,264.39	\$8,803.57		\$59,067.96
200 Personnel Services – Employee Benefits				
210 Group Insurance – Contracted Provider	41.40	28.60		70.00
220 Social Security Contributions	3,864.74	677.38		4,542.12
230 PSERS Retirement Contributions	12,349.27	2,159.55		14,508.82
250 Unemployment Compensation	78.76	12.00		90.76
260 Workers' Compensation	285.82	47.75		333.57
Total Personnel Services – Employee Benefits	\$16,619.99	\$2,925.28		\$19,545.27
300 Purchased Professional and Technical Services				
322 Professional Educational Services – lus	30,726.45	12,221.18		42,947.63
330 Other Professional Services	1,505.10	480.00		1,985.10
Total Purchased Professional and Technical Services	\$32,231.55	\$12,701.18		\$44,932.73
500 Other Purchased Services				
580 Travel	307.12			307.12
Total Other Purchased Services	\$307.12			\$307.12
600 Supplies				
610 General Supplies	251.60			251.60
Total Supplies	\$251.60			\$251.60
Total 1220 Sensory Support	\$99,674.65	\$24,430.03		\$124,104.68

General Fund (10)

1230 Emotional Support

	<u>Elementary</u>	<u>Secondary</u>	<u>Federal</u>	<u>Total</u>
100 Personnel Services – Salaries				
100 Personnel Services – Salaries	148,256.21	30,721.79		178,978.00
Total Personnel Services – Salaries	\$148,256.21	\$30,721.79		\$178,978.00
200 Personnel Services – Employee Benefits				
210 Group Insurance – Contracted Provider	32,286.05	5,653.95		37,940.00
220 Social Security Contributions	10,747.45	2,269.17		13,016.62
230 PSERS Retirement Contributions	37,237.73	7,876.04		45,113.77
250 Unemployment Compensation	228.24	53.13		281.37
260 Workers' Compensation	793.75	165.96		959.71
Total Personnel Services – Employee Benefits	\$81,293.22	\$16,018.25		\$97,311.47
300 Purchased Professional and Technical Services				
322 Professional Educational Services – lus	2,529.38	35,596.23		38,125.61
330 Other Professional Services	8,904.80	23,155.72		32,060.52
Total Purchased Professional and Technical Services	\$11,434.18	\$58,751.95		\$70,186.13
500 Other Purchased Services				
510 Student Transportation Services	1,474.73	6,875.01		8,349.74
580 Travel	388.16			388.16
Total Other Purchased Services	\$1,862.89	\$6,875.01		\$8,737.90
600 Supplies				
610 General Supplies	461.54			461.54
Total Supplies	\$461.54			\$461.54
Total 1230 Emotional Support	\$243,308.04	\$112,367.00		\$355,675.04

General Fund (10)

	<u>Elementary</u>	<u>Secondary</u>	<u>Federal</u>	<u>Total</u>
1240 Academic Support				
100 Personnel Services – Salaries				
100 Personnel Services – Salaries	186,549.03	251,517.89	258,666.06	696,732.98
Total Personnel Services – Salaries	\$186,549.03	\$251,517.89	\$258,666.06	\$696,732.98
200 Personnel Services – Employee Benefits				
210 Group Insurance – Contracted Provider	43,649.17	65,559.77	103,311.64	212,520.58
220 Social Security Contributions	13,984.97	18,768.58	19,101.79	51,855.34
230 PSERS Retirement Contributions	48,729.79	63,972.18	66,122.58	178,824.55
250 Unemployment Compensation	209.44	190.99	267.63	668.06
260 Workers' Compensation	1,177.45	1,358.38	1,396.82	3,932.65
Total Personnel Services – Employee Benefits	\$107,750.82	\$149,849.90	\$190,200.46	\$447,801.18
300 Purchased Professional and Technical Services				
322 Professional Educational Services – lus	23,979.39	23,342.42		47,321.81
329 Professional Educational Services – Other	22,740.00			22,740.00
330 Other Professional Services	42,423.22	608.68		43,031.90
Total Purchased Professional and Technical Services	\$89,142.61	\$23,951.10		\$113,093.71
500 Other Purchased Services				
510 Student Transportation Services	3,154.73			3,154.73
562 Tuition To Pennsylvania Charter Schools	66,574.95	165,007.06		231,582.01
580 Travel	30.97	87.33		118.30
Total Other Purchased Services	\$69,760.65	\$165,094.39		\$234,855.04
600 Supplies				
610 General Supplies	1,428.86	2,201.86		3,630.72
Total Supplies	\$1,428.86	\$2,201.86		\$3,630.72
700 Property				
750 Equipment – Original and Additional	2,391.37	500.00		2,891.37
Total Property	\$2,391.37	\$500.00		\$2,891.37
800 Other Objects				
810 Dues and Fees	525.00	525.00		1,050.00
Total Other Objects	\$525.00	\$525.00		\$1,050.00
Total 1240 Academic Support	\$457,548.34	\$593,640.14	\$448,866.52	\$1,500,055.00

General Fund (10)

	<u>Elementary</u>	<u>Secondary</u>	<u>Federal</u>	<u>Total</u>
1241 Learning Support – Public				
100 Personnel Services – Salaries				
100 Personnel Services – Salaries	186,549.03	251,517.89	258,666.06	696,732.98
Total Personnel Services – Salaries	\$186,549.03	\$251,517.89	\$258,666.06	\$696,732.98
200 Personnel Services – Employee Benefits				
210 Group Insurance – Contracted Provider	43,649.17	65,559.77	103,311.64	212,520.58
220 Social Security Contributions	13,984.97	18,768.58	19,101.79	51,855.34
230 PSERS Retirement Contributions	48,729.79	63,972.18	66,122.58	178,824.55
250 Unemployment Compensation	209.44	190.99	267.63	668.06
260 Workers' Compensation	1,177.45	1,358.38	1,396.82	3,932.65
Total Personnel Services – Employee Benefits	\$107,750.82	\$149,849.90	\$190,200.46	\$447,801.18
300 Purchased Professional and Technical Services				
322 Professional Educational Services – lus	1,941.17	1,304.00		3,245.17
329 Professional Educational Services – Other	22,740.00			22,740.00
330 Other Professional Services	42,423.22	608.68		43,031.90
Total Purchased Professional and Technical Services	\$67,104.39	\$1,912.68		\$69,017.07
500 Other Purchased Services				
510 Student Transportation Services	2,580.83			2,580.83
562 Tuition To Pennsylvania Charter Schools	66,574.95	165,007.06		231,582.01
580 Travel	30.97	87.33		118.30
Total Other Purchased Services	\$69,186.75	\$165,094.39		\$234,281.14
600 Supplies				
610 General Supplies	1,270.48	1,993.28		3,263.76
Total Supplies	\$1,270.48	\$1,993.28		\$3,263.76
700 Property				
750 Equipment – Original and Additional	2,391.37	500.00		2,891.37
Total Property	\$2,391.37	\$500.00		\$2,891.37
800 Other Objects				
810 Dues and Fees	525.00	525.00		1,050.00
Total Other Objects	\$525.00	\$525.00		\$1,050.00
Total 1241 Learning Support – Public	\$434,777.84	\$571,393.14	\$448,866.52	\$1,455,037.50

General Fund (10)

1243 Gifted Support

	<u>Elementary</u>	<u>Secondary</u>	<u>Federal</u>	<u>Total</u>
300 <u>Purchased Professional and Technical Services</u>				
322 Professional Educational Services – lus	22,038.22	22,038.42		44,076.64
Total Purchased Professional and Technical Services	\$22,038.22	\$22,038.42		\$44,076.64
500 <u>Other Purchased Services</u>				
510 Student Transportation Services	573.90			573.90
Total Other Purchased Services	\$573.90			\$573.90
600 <u>Supplies</u>				
610 General Supplies	158.38	208.58		366.96
Total Supplies	\$158.38	\$208.58		\$366.96
Total 1243 Gifted Support	\$22,770.50	\$22,247.00		\$45,017.50

General Fund (10)

1280 Early Intervention Support

300 Purchased Professional and Technical Services

322 Professional Educational Services – lus

Total Purchased Professional and Technical Services

Total 1280 Early Intervention Support

	<u>Elementary</u>	<u>Secondary</u>	<u>Federal</u>	<u>Total</u>
	8,624.03			8,624.03
	\$8,624.03			\$8,624.03
	\$8,624.03			\$8,624.03

LEA : 117089003 Wyalusing Area SD

Printed 6/20/2017 10:49:17 AM

General Fund (10)

1290 Special Programs - Other Support

300 Purchased Professional and Technical Services

322 Professional Educational Services – lus

329 Professional Educational Services – Other

Total Purchased Professional and Technical Services

Total 1290 Special Programs - Other Support

<u>Elementary</u>	<u>Secondary</u>	<u>Federal</u>	<u>Total</u>
	120,825.06		120,825.06
	3,792.95		3,792.95
	\$124,618.01		\$124,618.01
	\$124,618.01		\$124,618.01

General Fund (10)

1300 Vocational Education

	<u>Elementary</u>	<u>Secondary</u>	<u>Federal</u>	<u>Total</u>
100 Personnel Services – Salaries				
100 Personnel Services – Salaries		297,702.91		297,702.91
Total Personnel Services – Salaries		\$297,702.91		\$297,702.91
200 Personnel Services – Employee Benefits				
210 Group Insurance – Contracted Provider		71,186.80		71,186.80
220 Social Security Contributions		22,137.06		22,137.06
230 PSERS Retirement Contributions		76,402.13		76,402.13
250 Unemployment Compensation		174.03		174.03
260 Workers' Compensation		1,607.62		1,607.62
Total Personnel Services – Employee Benefits		\$171,507.64		\$171,507.64
400 Purchased Property Services				
430 Repairs and Maintenance Services		546.78		546.78
Total Purchased Property Services		\$546.78		\$546.78
500 Other Purchased Services				
510 Student Transportation Services		14,574.38		14,574.38
564 Tuition To Career and Technology Centers		327,048.69		327,048.69
Total Other Purchased Services		\$341,623.07		\$341,623.07
600 Supplies				
610 General Supplies		12,724.00		12,724.00
640 Books and Periodicals		1,143.25		1,143.25
Total Supplies		\$13,867.25		\$13,867.25
700 Property				
750 Equipment – Original and Additional		5,439.96		5,439.96
760 Equipment – Replacement		1,384.91		1,384.91
Total Property		\$6,824.87		\$6,824.87
Total 1300 Vocational Education		\$832,072.52		\$832,072.52

General Fund (10)

	<u>Elementary</u>	<u>Secondary</u>	<u>Federal</u>	<u>Total</u>
1400 Other Instructional Programs – Elementary / Secondary				
100 Personnel Services – Salaries				
100 Personnel Services – Salaries	216.00	389.00		605.00
Total Personnel Services – Salaries	\$216.00	\$389.00		\$605.00
200 Personnel Services – Employee Benefits				
220 Social Security Contributions	33.97	12.31		46.28
230 PSERS Retirement Contributions	114.73	34.45		149.18
250 Unemployment Compensation	0.93			0.93
260 Workers' Compensation	2.40	0.87		3.27
Total Personnel Services – Employee Benefits	\$152.03	\$47.63		\$199.66
300 Purchased Professional and Technical Services				
322 Professional Educational Services – Ius		19,000.44		19,000.44
329 Professional Educational Services – Other		5,000.00		5,000.00
330 Other Professional Services		800.00		800.00
Total Purchased Professional and Technical Services		\$24,800.44		\$24,800.44
500 Other Purchased Services				
568 Tuition To Private Residential Rehabilitative Institutions (PRRI) [In-State] and Detention Centers	7,160.40	29,842.51		37,002.91
580 Travel	1,186.08			1,186.08
Total Other Purchased Services	\$8,346.48	\$29,842.51		\$38,188.99
Total 1400 Other Instructional Programs – Elementary / Secondary	\$8,714.51	\$55,079.58		\$63,794.09

General Fund (10)

1430 Homebound Instruction

100 Personnel Services – Salaries

	<u>Elementary</u>	<u>Secondary</u>	<u>Federal</u>	<u>Total</u>
100 Personnel Services – Salaries	216.00	389.00		605.00
Total Personnel Services – Salaries	\$216.00	\$389.00		\$605.00

200 Personnel Services – Employee Benefits

220 Social Security Contributions	33.97	12.31		46.28
230 PSERS Retirement Contributions	114.73	34.45		149.18
250 Unemployment Compensation	0.93			0.93
260 Workers' Compensation	2.40	0.87		3.27
Total Personnel Services – Employee Benefits	\$152.03	\$47.63		\$199.66

500 Other Purchased Services

580 Travel	1,186.08			1,186.08
Total Other Purchased Services	\$1,186.08			\$1,186.08
Total 1430 Homebound Instruction	\$1,554.11	\$436.63		\$1,990.74

General Fund (10)

	<u>Elementary</u>	<u>Secondary</u>	<u>Federal</u>	<u>Total</u>
1440 Alternative Regular Education Programs				
300 <u>Purchased Professional and Technical Services</u>				
322 Professional Educational Services – Ius		19,000.44		19,000.44
329 Professional Educational Services – Other		5,000.00		5,000.00
330 Other Professional Services		800.00		800.00
Total Purchased Professional and Technical Services		\$24,800.44		\$24,800.44
500 <u>Other Purchased Services</u>				
568 Tuition To Private Residential Rehabilitative Institutions (PRRI) [In-State] and Detention Centers	7,160.40	29,842.51		37,002.91
Total Other Purchased Services	\$7,160.40	\$29,842.51		\$37,002.91
Total 1440 Alternative Regular Education Programs	\$7,160.40	\$54,642.95		\$61,803.35

LEA : 117089003 Wyalusing Area SD

Printed 6/20/2017 10:49:17 AM

General Fund (10)

1441 Adjudicated / Court-Placed Programs

500 Other Purchased Services

568 Tuition To Private Residential Rehabilitative Institutions (PRRI) [In-State] and Detention Centers

Total Other Purchased Services

Total 1441 Adjudicated / Court-Placed Programs

	<u>Elementary</u>	<u>Secondary</u>	<u>Federal</u>	<u>Total</u>
568 Tuition To Private Residential Rehabilitative Institutions (PRRI) [In-State] and Detention Centers	7,160.40	12,072.67		19,233.07
Total Other Purchased Services	\$7,160.40	\$12,072.67		\$19,233.07
Total 1441 Adjudicated / Court-Placed Programs	\$7,160.40	\$12,072.67		\$19,233.07

General Fund (10)

1442 Alternative Education Programs

300 Purchased Professional and Technical Services

	<u>Elementary</u>	<u>Secondary</u>	<u>Federal</u>	<u>Total</u>
322 Professional Educational Services – Ius		19,000.44		19,000.44
329 Professional Educational Services – Other		5,000.00		5,000.00
330 Other Professional Services		800.00		800.00

Total Purchased Professional and Technical Services		\$24,800.44		\$24,800.44
--	--	--------------------	--	--------------------

500 Other Purchased Services

568 Tuition To Private Residential Rehabilitative Institutions (PRRI) [In-State] and Detention Centers		17,769.84		17,769.84
--	--	-----------	--	-----------

Total Other Purchased Services		\$17,769.84		\$17,769.84
---------------------------------------	--	--------------------	--	--------------------

Total 1442 Alternative Education Programs		\$42,570.28		\$42,570.28
--	--	--------------------	--	--------------------

General Fund (10)

1500 Nonpublic School Programs

Elementary

Secondary

Federal

Total

300 Purchased Professional and Technical Services

323 Professional Educational Services – Other Educational Agencies

10,752.54

10,752.54

Total Purchased Professional and Technical Services

\$10,752.54

\$10,752.54

Total 1500 Nonpublic School Programs

\$10,752.54

\$10,752.54

General Fund (10)

2000 Support Services

Total

100 Personnel Services – Salaries

100 Personnel Services – Salaries 2,387,192.80

Total Personnel Services – Salaries \$2,387,192.80

200 Personnel Services – Employee Benefits

210 Group Insurance – Contracted Provider 546,548.59

220 Social Security Contributions 183,152.99

230 PSERS Retirement Contributions 600,533.09

240 Tuition Reimbursement 139,534.97

250 Unemployment Compensation 2,118.12

260 Workers' Compensation 12,921.71

Total Personnel Services – Employee Benefits \$1,484,809.47

300 Purchased Professional and Technical Services

310 Official / Administrative Services 77,722.84

322 Professional Educational Services – lus 13,720.53

330 Other Professional Services 99,440.83

340 Technical Services 1,500.00

Total Purchased Professional and Technical Services \$192,384.20

400 Purchased Property Services

410 Cleaning Services 43,492.64

420 Utility Services 216,992.76

430 Repairs and Maintenance Services 100,374.28

440 Rentals 16,430.80

Total Purchased Property Services \$377,290.48

500 Other Purchased Services

510 Student Transportation Services 910.71

513 Contracted Carriers 1,391,741.06

516 Student Transportation Services From the IU 10,999.67

520 Insurance – General 85,645.00

530 Communications 23,959.11

549 Other Advertising/Public Relations 10,706.42

580 Travel 14,664.47

594 IU Payment By Withholding for Institutionalized Children's Programs – Special Classes 16,644.86

599 Other Miscellaneous Purchased Services 220.00

Total Other Purchased Services \$1,555,491.30

600 Supplies

610 General Supplies 117,202.42

620 Energy 94,473.00

640 Books and Periodicals 65,342.86

650 Supplies & Fees – Technology Related 6,005.70

Total Supplies \$283,023.98

700 Property

750 Equipment – Original and Additional 93,555.60

760 Equipment – Replacement 38,251.59

General Fund (10)

2000 Support Services

	<u>Total</u>
Total Property	\$131,807.19
800 <u>Other Objects</u>	
810 Dues and Fees	24,444.77
860 Grants To Municipal and Community Service Organizations	12,960.00
Total Other Objects	\$37,404.77
Total 2000 Support Services	\$6,449,404.19

General Fund (10)

	<u>Elementary</u>	<u>Secondary</u>	<u>Federal</u>	<u>Total</u>
2100 Support Services – Students				
100 Personnel Services – Salaries				
100 Personnel Services – Salaries	165,561.44	306,843.08		472,404.52
Total Personnel Services – Salaries	\$165,561.44	\$306,843.08		\$472,404.52
200 Personnel Services – Employee Benefits				
210 Group Insurance – Contracted Provider	35,050.29	50,150.98		85,201.27
220 Social Security Contributions	12,366.17	23,231.43		35,597.60
230 PSERS Retirement Contributions	42,525.76	78,051.79		120,577.55
250 Unemployment Compensation	102.15	183.87		286.02
260 Workers' Compensation	894.00	1,656.89		2,550.89
Total Personnel Services – Employee Benefits	\$90,938.37	\$153,274.96		\$244,213.33
300 Purchased Professional and Technical Services				
330 Other Professional Services	11,510.24	11,582.24		23,092.48
Total Purchased Professional and Technical Services	\$11,510.24	\$11,582.24		\$23,092.48
500 Other Purchased Services				
510 Student Transportation Services		910.71		910.71
530 Communications	300.00	300.00		600.00
580 Travel	2,226.89	2,046.11		4,273.00
Total Other Purchased Services	\$2,526.89	\$3,256.82		\$5,783.71
600 Supplies				
610 General Supplies	611.66	2,345.52		2,957.18
640 Books and Periodicals	978.75	1,266.75		6,845.50
Total Supplies	\$1,590.41	\$3,612.27		\$9,802.68
700 Property				
760 Equipment – Replacement		689.00		689.00
Total Property		\$689.00		\$689.00
Total 2100 Support Services – Students	\$272,127.35	\$479,258.37		\$755,985.72

General Fund (10)

	<u>Elementary</u>	<u>Secondary</u>	<u>Federal</u>	<u>Total</u>
2120 Guidance Services				
100 Personnel Services – Salaries				
100 Personnel Services – Salaries	89,330.04	230,611.68		319,941.72
Total Personnel Services – Salaries	\$89,330.04	\$230,611.68		\$319,941.72
200 Personnel Services – Employee Benefits				
210 Group Insurance – Contracted Provider	17,614.53	32,715.24		50,329.77
220 Social Security Contributions	6,688.90	17,554.16		24,243.06
230 PSERS Retirement Contributions	22,830.87	58,356.91		81,187.78
250 Unemployment Compensation	40.85	122.57		163.42
260 Workers' Compensation	482.35	1,245.25		1,727.60
Total Personnel Services – Employee Benefits	\$47,657.50	\$109,994.13		\$157,651.63
300 Purchased Professional and Technical Services				
330 Other Professional Services	48.00	120.00		168.00
Total Purchased Professional and Technical Services	\$48.00	\$120.00		\$168.00
500 Other Purchased Services				
510 Student Transportation Services		910.71		910.71
580 Travel	180.78			180.78
Total Other Purchased Services	\$180.78	\$910.71		\$1,091.49
600 Supplies				
610 General Supplies		1,733.86		1,733.86
640 Books and Periodicals		288.00		288.00
Total Supplies		\$2,021.86		\$2,021.86
700 Property				
760 Equipment – Replacement		689.00		689.00
Total Property		\$689.00		\$689.00
Total 2120 Guidance Services	\$137,216.32	\$344,347.38		\$481,563.70

General Fund (10)

	<u>Elementary</u>	<u>Secondary</u>	<u>Federal</u>	<u>Total</u>
2140 Psychological Services				
100 Personnel Services – Salaries				
100 Personnel Services – Salaries	76,231.40	76,231.40		152,462.80
Total Personnel Services – Salaries	\$76,231.40	\$76,231.40		\$152,462.80
200 Personnel Services – Employee Benefits				
210 Group Insurance – Contracted Provider	17,435.76	17,435.74		34,871.50
220 Social Security Contributions	5,677.27	5,677.27		11,354.54
230 PSERS Retirement Contributions	19,694.89	19,694.88		39,389.77
250 Unemployment Compensation	61.30	61.30		122.60
260 Workers' Compensation	411.65	411.64		823.29
Total Personnel Services – Employee Benefits	\$43,280.87	\$43,280.83		\$86,561.70
300 Purchased Professional and Technical Services				
330 Other Professional Services	11,462.24	11,462.24		22,924.48
Total Purchased Professional and Technical Services	\$11,462.24	\$11,462.24		\$22,924.48
500 Other Purchased Services				
530 Communications	300.00	300.00		600.00
580 Travel	2,046.11	2,046.11		4,092.22
Total Other Purchased Services	\$2,346.11	\$2,346.11		\$4,692.22
600 Supplies				
610 General Supplies	611.66	611.66		1,223.32
640 Books and Periodicals	978.75	978.75		1,957.50
Total Supplies	\$1,590.41	\$1,590.41		\$3,180.82
Total 2140 Psychological Services	\$134,911.03	\$134,910.99		\$269,822.02

LEA : 117089003 Wyalusing Area SD

Printed 6/20/2017 10:49:19 AM

General Fund (10)

2170 Student Accounting Services

Elementary

Secondary

Federal

Total

600 Supplies

640 Books and Periodicals

4,600.00

Total Supplies

\$4,600.00

Total 2170 Student Accounting Services

\$4,600.00

General Fund (10)

2200 Support Services – Instructional Staff

	<u>Elementary</u>	<u>Secondary</u>	<u>Federal</u>	<u>Total</u>
100 Personnel Services – Salaries				
100 Personnel Services – Salaries	146,332.38	148,496.91		294,829.29
Total Personnel Services – Salaries	\$146,332.38	\$148,496.91		\$294,829.29
200 Personnel Services – Employee Benefits				
210 Group Insurance – Contracted Provider	28,571.64	39,595.11		68,166.75
220 Social Security Contributions	10,846.75	11,006.42	160.33	22,013.50
230 PSERS Retirement Contributions	37,288.72	38,070.41	416.80	75,775.93
240 Tuition Reimbursement	76,533.25	44,962.21	17,814.51	139,309.97
250 Unemployment Compensation	134.27	130.35	2.08	266.70
260 Workers' Compensation	790.15	801.98	11.34	1,603.47
Total Personnel Services – Employee Benefits	\$154,164.78	\$134,566.48	\$18,405.06	\$307,136.32
300 Purchased Professional and Technical Services				
322 Professional Educational Services – Ius	1,275.00	4,945.53		6,220.53
330 Other Professional Services			574.00	574.00
340 Technical Services	750.00	750.00		1,500.00
Total Purchased Professional and Technical Services	\$2,025.00	\$5,695.53	\$574.00	\$8,294.53
400 Purchased Property Services				
430 Repairs and Maintenance Services	30,250.00	31,186.67		61,436.67
440 Rentals	7,683.66	7,683.66		15,367.32
Total Purchased Property Services	\$37,933.66	\$38,870.33		\$76,803.99
500 Other Purchased Services				
580 Travel	660.38			660.38
Total Other Purchased Services	\$660.38			\$660.38
600 Supplies				
610 General Supplies	10,050.27	9,141.20		19,191.47
640 Books and Periodicals	29,226.75	29,270.61		58,497.36
650 Supplies & Fees – Technology Related	3,002.85	3,002.85		6,005.70
Total Supplies	\$42,279.87	\$41,414.66		\$83,694.53
700 Property				
750 Equipment – Original and Additional	14,344.70	64,940.47		79,285.17
760 Equipment – Replacement	854.50	854.50		1,709.00
Total Property	\$15,199.20	\$65,794.97		\$80,994.17
Total 2200 Support Services – Instructional Staff	\$398,595.27	\$434,838.88	\$18,979.06	\$852,413.21

General Fund (10)

	<u>Elementary</u>	<u>Secondary</u>	<u>Federal</u>	<u>Total</u>
2240 Computer-Assisted Instruction Support Services				
100 Personnel Services – Salaries				
100 Personnel Services – Salaries	51,913.16	51,913.16		103,826.32
Total Personnel Services – Salaries	\$51,913.16	\$51,913.16		\$103,826.32
200 Personnel Services – Employee Benefits				
210 Group Insurance – Contracted Provider	12,159.50	12,159.49		24,318.99
220 Social Security Contributions	3,848.31	3,848.30		7,696.61
230 PSERS Retirement Contributions	13,376.95	13,376.94		26,753.89
250 Unemployment Compensation	60.22	60.21		120.43
260 Workers' Compensation	280.35	280.34		560.69
Total Personnel Services – Employee Benefits	\$29,725.33	\$29,725.28		\$59,450.61
300 Purchased Professional and Technical Services				
340 Technical Services	750.00	750.00		1,500.00
Total Purchased Professional and Technical Services	\$750.00	\$750.00		\$1,500.00
400 Purchased Property Services				
430 Repairs and Maintenance Services	30,250.00	30,250.00		60,500.00
440 Rentals	7,683.66	7,683.66		15,367.32
Total Purchased Property Services	\$37,933.66	\$37,933.66		\$75,867.32
600 Supplies				
610 General Supplies	8,716.91	8,914.70		17,631.61
640 Books and Periodicals	27,500.53	27,500.52		55,001.05
650 Supplies & Fees – Technology Related	3,002.85	3,002.85		6,005.70
Total Supplies	\$39,220.29	\$39,418.07		\$78,638.36
700 Property				
750 Equipment – Original and Additional	14,344.70	64,940.47		79,285.17
760 Equipment – Replacement	854.50	854.50		1,709.00
Total Property	\$15,199.20	\$65,794.97		\$80,994.17
Total 2240 Computer-Assisted Instruction Support Services	\$174,741.64	\$225,535.14		\$400,276.78

General Fund (10)

	<u>Elementary</u>	<u>Secondary</u>	<u>Federal</u>	<u>Total</u>
2250 School Library Services				
100 Personnel Services – Salaries				
100 Personnel Services – Salaries	79,821.52	83,760.55		163,582.07
Total Personnel Services – Salaries	\$79,821.52	\$83,760.55		\$163,582.07
200 Personnel Services – Employee Benefits				
210 Group Insurance – Contracted Provider	7,081.32	18,104.80		25,186.12
220 Social Security Contributions	6,016.93	6,312.34		12,329.27
230 PSERS Retirement Contributions	20,304.43	21,462.32		41,766.75
250 Unemployment Compensation	43.61	46.70		90.31
260 Workers' Compensation	430.97	452.35		883.32
Total Personnel Services – Employee Benefits	\$33,877.26	\$46,378.51		\$80,255.77
400 Purchased Property Services				
430 Repairs and Maintenance Services		936.67		936.67
Total Purchased Property Services		\$936.67		\$936.67
600 Supplies				
610 General Supplies	1,106.86			1,106.86
640 Books and Periodicals	1,674.68	1,718.55		3,393.23
Total Supplies	\$2,781.54	\$1,718.55		\$4,500.09
Total 2250 School Library Services	\$116,480.32	\$132,794.28		\$249,274.60

General Fund (10)

	<u>Elementary</u>	<u>Secondary</u>	<u>Federal</u>	<u>Total</u>
2260 Instruction and Curriculum Development Services				
100 Personnel Services – Salaries				
100 Personnel Services – Salaries	11,731.20	11,731.20		23,462.40
Total Personnel Services – Salaries	\$11,731.20	\$11,731.20		\$23,462.40
200 Personnel Services – Employee Benefits				
210 Group Insurance – Contracted Provider	9,330.82	9,330.82		18,661.64
220 Social Security Contributions	762.27	762.26		1,524.53
230 PSERS Retirement Contributions	3,031.30	3,031.29		6,062.59
250 Unemployment Compensation	19.31	19.31		38.62
260 Workers' Compensation	63.38	63.37		126.75
Total Personnel Services – Employee Benefits	\$13,207.08	\$13,207.05		\$26,414.13
300 Purchased Professional and Technical Services				
322 Professional Educational Services – lus		4,945.53		4,945.53
Total Purchased Professional and Technical Services		\$4,945.53		\$4,945.53
Total 2260 Instruction and Curriculum Development Services	\$24,938.28	\$29,883.78		\$54,822.06

General Fund (10)

	<u>Elementary</u>	<u>Secondary</u>	<u>Federal</u>	<u>Total</u>
2270 Instructional Staff Professional Development Services				
100 Personnel Services – Salaries				
100 Personnel Services – Salaries	2,866.50	1,092.00		3,958.50
Total Personnel Services – Salaries	\$2,866.50	\$1,092.00		\$3,958.50
200 Personnel Services – Employee Benefits				
220 Social Security Contributions	219.24	83.52	160.33	463.09
230 PSERS Retirement Contributions	576.04	199.86	416.80	1,192.70
240 Tuition Reimbursement	76,533.25	44,962.21	17,814.51	139,309.97
250 Unemployment Compensation	11.13	4.13	2.08	17.34
260 Workers' Compensation	15.45	5.92	11.34	32.71
Total Personnel Services – Employee Benefits	\$77,355.11	\$45,255.64	\$18,405.06	\$141,015.81
300 Purchased Professional and Technical Services				
322 Professional Educational Services – lus	1,275.00			1,275.00
330 Other Professional Services			574.00	574.00
Total Purchased Professional and Technical Services	\$1,275.00		\$574.00	\$1,849.00
500 Other Purchased Services				
580 Travel	660.38			660.38
Total Other Purchased Services	\$660.38			\$660.38
600 Supplies				
610 General Supplies	226.50	226.50		453.00
640 Books and Periodicals	51.54	51.54		103.08
Total Supplies	\$278.04	\$278.04		\$556.08
Total 2270 Instructional Staff Professional Development Services	\$82,435.03	\$46,625.68	\$18,979.06	\$148,039.77

General Fund (10)

	<u>Elementary</u>	<u>Secondary</u>	<u>Federal</u>	<u>Total</u>
2300 Support Services – Administration				
100 Personnel Services – Salaries				
100 Personnel Services – Salaries	239,072.79	276,696.27		699,375.00
Total Personnel Services – Salaries	\$239,072.79	\$276,696.27		\$699,375.00
200 Personnel Services – Employee Benefits				
210 Group Insurance – Contracted Provider	30,577.14	54,674.09		117,860.51
220 Social Security Contributions	18,024.00	20,796.94		56,688.56
230 PSERS Retirement Contributions	60,098.42	68,852.25		175,904.27
250 Unemployment Compensation	187.90	213.08		483.56
260 Workers' Compensation	1,291.00	1,494.23		3,776.69
Total Personnel Services – Employee Benefits	\$110,178.46	\$146,030.59		\$354,713.59
300 Purchased Professional and Technical Services				
310 Official / Administrative Services				77,722.84
322 Professional Educational Services – lus				7,500.00
330 Other Professional Services				33,515.60
Total Purchased Professional and Technical Services				\$118,738.44
400 Purchased Property Services				
430 Repairs and Maintenance Services				2,515.66
Total Purchased Property Services				\$2,515.66
500 Other Purchased Services				
520 Insurance – General				250.00
530 Communications	3,833.60	5,540.08		9,373.68
580 Travel	272.76	1,921.83		7,673.67
Total Other Purchased Services	\$4,106.36	\$7,461.91		\$17,297.35
600 Supplies				
610 General Supplies	1,600.00	71.95		21,333.30
Total Supplies	\$1,600.00	\$71.95		\$21,333.30
700 Property				
760 Equipment – Replacement		57.51		1,857.61
Total Property		\$57.51		\$1,857.61
800 Other Objects				
810 Dues and Fees	1,190.00	749.00		22,400.41
860 Grants To Municipal and Community Service Organizations				12,960.00
Total Other Objects	\$1,190.00	\$749.00		\$35,360.41
Total 2300 Support Services – Administration	\$356,147.61	\$431,067.23		\$1,251,191.36

General Fund (10)

2310 Board Services

	<u>Elementary</u>	<u>Secondary</u>	<u>Federal</u>	<u>Total</u>
100 Personnel Services – Salaries				
100 Personnel Services – Salaries				2,600.00
Total Personnel Services – Salaries				\$2,600.00
200 Personnel Services – Employee Benefits				
220 Social Security Contributions				198.90
230 PSERS Retirement Contributions				671.84
250 Unemployment Compensation				0.86
260 Workers' Compensation				14.04
Total Personnel Services – Employee Benefits				\$885.64
500 Other Purchased Services				
520 Insurance – General				250.00
580 Travel				1,262.83
Total Other Purchased Services				\$1,512.83
600 Supplies				
610 General Supplies				2,692.94
Total Supplies				\$2,692.94
800 Other Objects				
810 Dues and Fees				17,090.41
Total Other Objects				\$17,090.41
Total 2310 Board Services				\$24,781.82

General Fund (10)

	<u>Elementary</u>	<u>Secondary</u>	<u>Federal</u>	<u>Total</u>
2330 Tax Assessment and Collection Services				
200 Personnel Services – Employee Benefits				
220 Social Security Contributions				4,310.96
Total Personnel Services – Employee Benefits				\$4,310.96
300 Purchased Professional and Technical Services				
310 Official / Administrative Services				77,722.84
330 Other Professional Services				289.26
Total Purchased Professional and Technical Services				\$78,012.10
600 Supplies				
610 General Supplies				11,366.17
Total Supplies				\$11,366.17
Total 2330 Tax Assessment and Collection Services				\$93,689.23

General Fund (10)

2340 Staff Relations and Negotiations Services

Elementary

Secondary

Federal

Total

300 Purchased Professional and Technical Services

330 Other Professional Services

15,541.50

Total Purchased Professional and Technical Services

\$15,541.50

Total 2340 Staff Relations and Negotiations Services

\$15,541.50

LEA : 117089003 Wyalusing Area SD

Printed 6/20/2017 10:49:19 AM

General Fund (10)

2350 Legal and Accounting Services

Elementary

Secondary

Federal

Total

300 Purchased Professional and Technical Services

330 Other Professional Services

14,984.84

Total Purchased Professional and Technical Services

\$14,984.84

Total 2350 Legal and Accounting Services

\$14,984.84

General Fund (10)

	<u>Elementary</u>	<u>Secondary</u>	<u>Federal</u>	<u>Total</u>
2360 Office of the Superintendent / Executive Director Services				
100 Personnel Services – Salaries				
100 Personnel Services – Salaries				181,005.94
Total Personnel Services – Salaries				\$181,005.94
200 Personnel Services – Employee Benefits				
210 Group Insurance – Contracted Provider				32,609.28
220 Social Security Contributions				13,357.76
230 PSERS Retirement Contributions				46,281.76
250 Unemployment Compensation				81.72
260 Workers' Compensation				977.42
Total Personnel Services – Employee Benefits				\$93,307.94
300 Purchased Professional and Technical Services				
322 Professional Educational Services – lus				7,500.00
330 Other Professional Services				2,700.00
Total Purchased Professional and Technical Services				\$10,200.00
400 Purchased Property Services				
430 Repairs and Maintenance Services				2,515.66
Total Purchased Property Services				\$2,515.66
500 Other Purchased Services				
530 Communications	758.86	758.85		1,517.71
580 Travel				4,216.25
Total Other Purchased Services	\$758.86	\$758.85		\$5,733.96
600 Supplies				
610 General Supplies				4,102.24
Total Supplies				\$4,102.24
700 Property				
760 Equipment – Replacement				1,800.10
Total Property				\$1,800.10
800 Other Objects				
810 Dues and Fees				3,371.00
Total Other Objects				\$3,371.00
Total 2360 Office of the Superintendent / Executive Director Services	\$758.86	\$758.85		\$302,036.84

General Fund (10)

2370 Community Relations Services

Elementary

Secondary

Federal

Total

600 Supplies

610 General Supplies

1,500.00

Total Supplies

\$1,500.00

800 Other Objects

860 Grants To Municipal and Community Service Organizations

12,960.00

Total Other Objects

\$12,960.00

Total 2370 Community Relations Services

\$14,460.00

General Fund (10)

	<u>Elementary</u>	<u>Secondary</u>	<u>Federal</u>	<u>Total</u>
2380 Office of the Principal Services				
100 Personnel Services – Salaries				
100 Personnel Services – Salaries	239,072.79	276,696.27		515,769.06
Total Personnel Services – Salaries	\$239,072.79	\$276,696.27		\$515,769.06
200 Personnel Services – Employee Benefits				
210 Group Insurance – Contracted Provider	30,577.14	54,674.09		85,251.23
220 Social Security Contributions	18,024.00	20,796.94		38,820.94
230 PSERS Retirement Contributions	60,098.42	68,852.25		128,950.67
250 Unemployment Compensation	187.90	213.08		400.98
260 Workers' Compensation	1,291.00	1,494.23		2,785.23
Total Personnel Services – Employee Benefits	\$110,178.46	\$146,030.59		\$256,209.05
500 Other Purchased Services				
530 Communications	3,074.74	4,781.23		7,855.97
580 Travel	272.76	1,921.83		2,194.59
Total Other Purchased Services	\$3,347.50	\$6,703.06		\$10,050.56
600 Supplies				
610 General Supplies	1,600.00	71.95		1,671.95
Total Supplies	\$1,600.00	\$71.95		\$1,671.95
700 Property				
760 Equipment – Replacement		57.51		57.51
Total Property		\$57.51		\$57.51
800 Other Objects				
810 Dues and Fees	1,190.00	749.00		1,939.00
Total Other Objects	\$1,190.00	\$749.00		\$1,939.00
Total 2380 Office of the Principal Services	\$355,388.75	\$430,308.38		\$785,697.13

General Fund (10)

2400 Support Services – Pupil Health

Elementary Secondary Federal Total

100 Personnel Services – Salaries

100 Personnel Services – Salaries 118,944.15

Total Personnel Services – Salaries \$118,944.15

200 Personnel Services – Employee Benefits

210 Group Insurance – Contracted Provider 19,110.45

220 Social Security Contributions 8,784.56

230 PSERS Retirement Contributions 27,199.60

250 Unemployment Compensation 118.47

260 Workers' Compensation 659.16

Total Personnel Services – Employee Benefits \$55,872.24

300 Purchased Professional and Technical Services

330 Other Professional Services 352.00

Total Purchased Professional and Technical Services \$352.00

400 Purchased Property Services

430 Repairs and Maintenance Services 485.28

Total Purchased Property Services \$485.28

600 Supplies

610 General Supplies 2,622.92

Total Supplies \$2,622.92

Total 2400 Support Services – Pupil Health \$178,276.59

General Fund (10)

2420 Medical Services

	<u>Elementary</u>	<u>Secondary</u>	<u>Federal</u>	<u>Total</u>
100 Personnel Services – Salaries				
100 Personnel Services – Salaries				118,944.15
Total Personnel Services – Salaries				\$118,944.15
200 Personnel Services – Employee Benefits				
210 Group Insurance – Contracted Provider				19,110.45
220 Social Security Contributions				8,784.56
230 PSERS Retirement Contributions				27,199.60
250 Unemployment Compensation				118.47
260 Workers' Compensation				659.16
Total Personnel Services – Employee Benefits				\$55,872.24
300 Purchased Professional and Technical Services				
330 Other Professional Services				352.00
Total Purchased Professional and Technical Services				\$352.00
400 Purchased Property Services				
430 Repairs and Maintenance Services				485.28
Total Purchased Property Services				\$485.28
600 Supplies				
610 General Supplies				2,622.92
Total Supplies				\$2,622.92
Total 2420 Medical Services				\$178,276.59

General Fund (10)

	<u>Elementary</u>	<u>Secondary</u>	<u>Federal</u>	<u>Total</u>
2500 Support Services – Business				
100 Personnel Services – Salaries				
100 Personnel Services – Salaries				249,085.05
Total Personnel Services – Salaries				\$249,085.05
200 Personnel Services – Employee Benefits				
210 Group Insurance – Contracted Provider				87,995.89
220 Social Security Contributions				18,590.06
230 PSERS Retirement Contributions				63,454.12
240 Tuition Reimbursement				225.00
250 Unemployment Compensation				231.49
260 Workers' Compensation				1,347.57
Total Personnel Services – Employee Benefits				\$171,844.13
300 Purchased Professional and Technical Services				
330 Other Professional Services				32,323.00
Total Purchased Professional and Technical Services				\$32,323.00
400 Purchased Property Services				
430 Repairs and Maintenance Services				3,532.73
Total Purchased Property Services				\$3,532.73
500 Other Purchased Services				
520 Insurance – General				85,395.00
530 Communications				13,363.13
549 Other Advertising/Public Relations				10,706.42
580 Travel				1,737.82
594 IU Payment By Withholding for Institutionalized Children's Programs – Special Classes				16,644.86
599 Other Miscellaneous Purchased Services				220.00
Total Other Purchased Services				\$128,067.23
600 Supplies				
610 General Supplies				4,993.95
Total Supplies				\$4,993.95
700 Property				
760 Equipment – Replacement				504.82
Total Property				\$504.82
800 Other Objects				
810 Dues and Fees				1,944.36
Total Other Objects				\$1,944.36
Total 2500 Support Services – Business				\$592,295.27

General Fund (10)

2510 Fiscal Services

Elementary Secondary Federal Total

100	<u>Personnel Services – Salaries</u>				
	100 Personnel Services – Salaries				249,085.05
Total Personnel Services – Salaries					\$249,085.05
200	<u>Personnel Services – Employee Benefits</u>				
	210 Group Insurance – Contracted Provider				87,995.89
	220 Social Security Contributions				18,590.06
	230 PSERS Retirement Contributions				63,454.12
	240 Tuition Reimbursement				225.00
	250 Unemployment Compensation				231.49
	260 Workers' Compensation				1,347.57
Total Personnel Services – Employee Benefits					\$171,844.13
300	<u>Purchased Professional and Technical Services</u>				
	330 Other Professional Services				32,323.00
Total Purchased Professional and Technical Services					\$32,323.00
400	<u>Purchased Property Services</u>				
	430 Repairs and Maintenance Services				3,532.73
Total Purchased Property Services					\$3,532.73
500	<u>Other Purchased Services</u>				
	520 Insurance – General				85,395.00
	530 Communications				13,363.13
	549 Other Advertising/Public Relations				10,706.42
	580 Travel				1,737.82
	594 IU Payment By Withholding for Institutionalized Children's Programs – Special Classes				16,644.86
	599 Other Miscellaneous Purchased Services				220.00
Total Other Purchased Services					\$128,067.23
600	<u>Supplies</u>				
	610 General Supplies				4,993.95
Total Supplies					\$4,993.95
700	<u>Property</u>				
	760 Equipment – Replacement				504.82
Total Property					\$504.82
800	<u>Other Objects</u>				
	810 Dues and Fees				1,944.36
Total Other Objects					\$1,944.36
Total 2510 Fiscal Services					\$592,295.27

General Fund (10)

	<u>Elementary</u>	<u>Secondary</u>	<u>Federal</u>	<u>Total</u>
2511 Supervision of Fiscal Services - Head of Component				
100 Personnel Services – Salaries				
100 Personnel Services – Salaries				249,085.05
Total Personnel Services – Salaries				\$249,085.05
200 Personnel Services – Employee Benefits				
210 Group Insurance – Contracted Provider				87,995.89
220 Social Security Contributions				18,590.06
230 PSERS Retirement Contributions				63,454.12
240 Tuition Reimbursement				225.00
250 Unemployment Compensation				231.49
260 Workers' Compensation				1,347.57
Total Personnel Services – Employee Benefits				\$171,844.13
300 Purchased Professional and Technical Services				
330 Other Professional Services				32,323.00
Total Purchased Professional and Technical Services				\$32,323.00
400 Purchased Property Services				
430 Repairs and Maintenance Services				3,532.73
Total Purchased Property Services				\$3,532.73
500 Other Purchased Services				
520 Insurance – General				85,395.00
530 Communications				13,363.13
549 Other Advertising/Public Relations				10,706.42
580 Travel				1,737.82
594 IU Payment By Withholding for Institutionalized Children's Programs – Special Classes				16,644.86
599 Other Miscellaneous Purchased Services				220.00
Total Other Purchased Services				\$128,067.23
600 Supplies				
610 General Supplies				4,993.95
Total Supplies				\$4,993.95
700 Property				
760 Equipment – Replacement				504.82
Total Property				\$504.82
800 Other Objects				
810 Dues and Fees				1,944.36
Total Other Objects				\$1,944.36
Total 2511 Supervision of Fiscal Services - Head of Component				\$592,295.27

General Fund (10)

	<u>Elementary</u>	<u>Secondary</u>	<u>Federal</u>	<u>Total</u>
2600 Operation and Maintenance of Plant Services				
100 Personnel Services – Salaries				
100 Personnel Services – Salaries				552,554.79
Total Personnel Services – Salaries				\$552,554.79
200 Personnel Services – Employee Benefits				
210 Group Insurance – Contracted Provider				168,213.72
220 Social Security Contributions				41,478.71
230 PSERS Retirement Contributions				137,621.62
250 Unemployment Compensation				731.88
260 Workers' Compensation				2,983.93
Total Personnel Services – Employee Benefits				\$351,029.86
300 Purchased Professional and Technical Services				
330 Other Professional Services				8,045.75
Total Purchased Professional and Technical Services				\$8,045.75
400 Purchased Property Services				
410 Cleaning Services				43,492.64
420 Utility Services				216,992.76
430 Repairs and Maintenance Services				32,222.34
440 Rentals				1,063.48
Total Purchased Property Services				\$293,771.22
500 Other Purchased Services				
530 Communications				622.30
580 Travel				319.60
Total Other Purchased Services				\$941.90
600 Supplies				
610 General Supplies	21,983.25	30,474.37		52,457.62
620 Energy				94,473.00
Total Supplies	\$21,983.25	\$30,474.37		\$146,930.62
700 Property				
750 Equipment – Original and Additional				14,270.43
760 Equipment – Replacement				24,236.16
Total Property				\$38,506.59
800 Other Objects				
810 Dues and Fees				100.00
Total Other Objects				\$100.00
Total 2600 Operation and Maintenance of Plant Services	\$21,983.25	\$30,474.37		\$1,391,880.73

General Fund (10)

2610 Supervision of Operation and Maintenance of Plant Services

Elementary

Secondary

Federal

Total

100 Personnel Services – Salaries

100 Personnel Services – Salaries

124,305.58

Total Personnel Services – Salaries

\$124,305.58

200 Personnel Services – Employee Benefits

210 Group Insurance – Contracted Provider

31,492.24

220 Social Security Contributions

9,266.52

230 PSERS Retirement Contributions

31,696.84

250 Unemployment Compensation

81.71

260 Workers' Compensation

671.33

Total Personnel Services – Employee Benefits

\$73,208.64

500 Other Purchased Services

580 Travel

11.50

Total Other Purchased Services

\$11.50

Total 2610 Supervision of Operation and Maintenance of Plant Services

\$197,525.72

General Fund (10)

	<u>Elementary</u>	<u>Secondary</u>	<u>Federal</u>	<u>Total</u>
2611 Supervision of Operation and Maintenance of Plant Services – Head of Component				
100 Personnel Services – Salaries				
100 Personnel Services – Salaries				124,305.58
Total Personnel Services – Salaries				\$124,305.58
200 Personnel Services – Employee Benefits				
210 Group Insurance – Contracted Provider				31,492.24
220 Social Security Contributions				9,266.52
230 PSERS Retirement Contributions				31,696.84
250 Unemployment Compensation				81.71
260 Workers' Compensation				671.33
Total Personnel Services – Employee Benefits				\$73,208.64
500 Other Purchased Services				
580 Travel				11.50
Total Other Purchased Services				\$11.50
Total 2611 Supervision of Operation and Maintenance of Plant Services – Head of Component				\$197,525.72

General Fund (10)

2620 Operation of Buildings Services

Elementary Secondary Federal Total

100 Personnel Services – Salaries

100 Personnel Services – Salaries 428,249.21

Total Personnel Services – Salaries \$428,249.21

200 Personnel Services – Employee Benefits

210 Group Insurance – Contracted Provider 136,721.48

220 Social Security Contributions 32,212.19

230 PSERS Retirement Contributions 105,924.78

250 Unemployment Compensation 650.17

260 Workers' Compensation 2,312.60

Total Personnel Services – Employee Benefits \$277,821.22

300 Purchased Professional and Technical Services

330 Other Professional Services 8,045.75

Total Purchased Professional and Technical Services \$8,045.75

400 Purchased Property Services

410 Cleaning Services 43,492.64

420 Utility Services 216,992.76

430 Repairs and Maintenance Services 32,222.34

440 Rentals 1,063.48

Total Purchased Property Services \$293,771.22

500 Other Purchased Services

530 Communications 622.30

580 Travel 308.10

Total Other Purchased Services \$930.40

600 Supplies

610 General Supplies 21,983.25 30,474.37 52,457.62

620 Energy 94,473.00

Total Supplies \$21,983.25 \$30,474.37 \$146,930.62

700 Property

750 Equipment – Original and Additional 345.26

760 Equipment – Replacement 24,236.16

Total Property \$24,581.42

800 Other Objects

810 Dues and Fees 100.00

Total Other Objects \$100.00

Total 2620 Operation of Buildings Services \$21,983.25 \$30,474.37 \$1,180,429.84

LEA : 117089003 Wyalusing Area SD

Printed 6/20/2017 10:49:19 AM

General Fund (10)

	<u>Elementary</u>	<u>Secondary</u>	<u>Federal</u>	<u>Total</u>
2650 Vehicle Operation and Maintenance Services (Other Than Student Transportation Vehicles)				
700 <u>Property</u>				
750 Equipment – Original and Additional				13,925.17
Total Property				\$13,925.17
Total 2650 Vehicle Operation and Maintenance Services (Other Than Student Transportation Vehicles)				\$13,925.17

General Fund (10)

	<u>Elementary</u>	<u>Secondary</u>	<u>Federal</u>	<u>Total</u>
2700 Student Transportation Services				
300 <u>Purchased Professional and Technical Services</u>				
330 Other Professional Services				1,538.00
Total Purchased Professional and Technical Services				\$1,538.00
400 <u>Purchased Property Services</u>				
430 Repairs and Maintenance Services				181.60
Total Purchased Property Services				\$181.60
500 <u>Other Purchased Services</u>				
513 Contracted Carriers				1,391,741.06
516 Student Transportation Services From the IU				10,999.67
Total Other Purchased Services				\$1,402,740.73
600 <u>Supplies</u>				
610 General Supplies				4,654.18
Total Supplies				\$4,654.18
700 <u>Property</u>				
760 Equipment – Replacement				9,255.00
Total Property				\$9,255.00
Total 2700 Student Transportation Services				\$1,418,369.51

General Fund (10)

2720 Vehicle Operation Services

Elementary

Secondary

Federal

Total

300 Purchased Professional and Technical Services

330 Other Professional Services

1,538.00

Total Purchased Professional and Technical Services

\$1,538.00

400 Purchased Property Services

430 Repairs and Maintenance Services

40.00

Total Purchased Property Services

\$40.00

500 Other Purchased Services

513 Contracted Carriers

1,391,741.06

Total Other Purchased Services

\$1,391,741.06

600 Supplies

610 General Supplies

4,654.18

Total Supplies

\$4,654.18

700 Property

760 Equipment – Replacement

9,255.00

Total Property

\$9,255.00

Total 2720 Vehicle Operation Services

\$1,407,228.24

LEA : 117089003 Wyalusing Area SD

Printed 6/20/2017 10:49:19 AM

General Fund (10)

2740 Vehicle Servicing and Maintenance Services

Elementary

Secondary

Federal

Total

400 Purchased Property Services

430 Repairs and Maintenance Services

141.60

Total Purchased Property Services

\$141.60

Total 2740 Vehicle Servicing and Maintenance Services

\$141.60

General Fund (10)

2750 Nonpublic Transportation

Elementary

Secondary

Federal

Total

500 Other Purchased Services

516 Student Transportation Services From the IU

10,999.67

Total Other Purchased Services

\$10,999.67

Total 2750 Nonpublic Transportation

\$10,999.67

LEA : 117089003 Wyalusing Area SD

Printed 6/20/2017 10:49:19 AM

General Fund (10)

2800 Support Services – Central

Elementary

Secondary

Federal

Total

600 Supplies

610 General Supplies

8,991.80

Total Supplies

\$8,991.80

Total 2800 Support Services – Central

\$8,991.80

LEA : 117089003 Wyalusing Area SD

Printed 6/20/2017 10:49:19 AM

General Fund (10)

2830 Staff Services

Elementary

Secondary

Federal

Total

600 Supplies

610 General Supplies

8,991.80

Total Supplies

\$8,991.80

Total 2830 Staff Services

\$8,991.80

LEA : 117089003 Wyalusing Area SD

Printed 6/20/2017 10:49:19 AM

General Fund (10)

2833 Staff Accounting Services

Elementary

Secondary

Federal

Total

600 Supplies

610 General Supplies

8,991.80

Total Supplies

\$8,991.80

Total 2833 Staff Accounting Services

\$8,991.80

General Fund (10)

3000 Operation of Non-Instructional Services	<u>Total</u>
100 Personnel Services – Salaries	
100 Personnel Services – Salaries	191,863.67
Total Personnel Services – Salaries	\$191,863.67
200 Personnel Services – Employee Benefits	
210 Group Insurance – Contracted Provider	219.95
220 Social Security Contributions	14,666.51
230 PSERS Retirement Contributions	33,216.83
250 Unemployment Compensation	349.07
260 Workers’ Compensation	1,034.90
Total Personnel Services – Employee Benefits	\$49,487.26
300 Purchased Professional and Technical Services	
330 Other Professional Services	20,615.00
Total Purchased Professional and Technical Services	\$20,615.00
500 Other Purchased Services	
510 Student Transportation Services	46,365.86
530 Communications	450.00
580 Travel	806.88
Total Other Purchased Services	\$47,622.74
600 Supplies	
610 General Supplies	56,553.42
Total Supplies	\$56,553.42
700 Property	
750 Equipment – Original and Additional	21,875.20
Total Property	\$21,875.20
Total 3000 Operation of Non-Instructional Services	\$388,017.29

General Fund (10)

3200 Student Activities

Elementary

Secondary

Federal

Total

100 Personnel Services – Salaries

100 Personnel Services – Salaries

191,863.67

Total Personnel Services – Salaries

\$191,863.67

200 Personnel Services – Employee Benefits

210 Group Insurance – Contracted Provider

219.95

220 Social Security Contributions

14,666.51

230 PSERS Retirement Contributions

33,216.83

250 Unemployment Compensation

349.07

260 Workers' Compensation

1,034.90

Total Personnel Services – Employee Benefits

\$49,487.26

300 Purchased Professional and Technical Services

330 Other Professional Services

20,615.00

Total Purchased Professional and Technical Services

\$20,615.00

500 Other Purchased Services

510 Student Transportation Services

46,365.86

530 Communications

450.00

580 Travel

806.88

Total Other Purchased Services

\$47,622.74

600 Supplies

610 General Supplies

54,178.54

Total Supplies

\$54,178.54

700 Property

750 Equipment – Original and Additional

21,875.20

Total Property

\$21,875.20

Total 3200 Student Activities

\$385,642.41

LEA : 117089003 Wyalusing Area SD

Printed 6/20/2017 10:49:21 AM

General Fund (10)

3300 Community Services

600 Supplies

610 General Supplies

Total Supplies

Total 3300 Community Services

Elementary

Secondary

Federal

Total

2,374.88

2,374.88

\$2,374.88

\$2,374.88

\$2,374.88

\$2,374.88

LEA : 117089003 Wyalusing Area SD

Printed 6/20/2017 10:49:22 AM

General Fund (10)

5000 Other Expenditures and Financing Uses

Total

800 Other Objects

830 Interest

624,573.16

880 Refunds of Prior Years' Receipts

5.41

Total Other Objects

\$624,578.57

900 Other Uses of Funds

910 Redemption of Principal

6,655,776.00

Total Other Uses of Funds

\$6,655,776.00

Total 5000 Other Expenditures and Financing Uses

\$7,280,354.57

General Fund (10)

	<u>Elementary</u>	<u>Secondary</u>	<u>Federal</u>	<u>Total</u>
5100 Debt Service / Other Expenditures and Financing Uses				
800 Other Objects				
830 Interest				624,573.16
880 Refunds of Prior Years' Receipts				5.41
Total Other Objects				\$624,578.57
900 Other Uses of Funds				
910 Redemption of Principal				6,655,776.00
Total Other Uses of Funds				\$6,655,776.00
Total 5100 Debt Service / Other Expenditures and Financing Uses				\$7,280,354.57

LEA : 117089003 Wyalusing Area SD

Printed 6/20/2017 10:49:22 AM

General Fund (10)

	<u>Elementary</u>	<u>Secondary</u>	<u>Federal</u>	<u>Total</u>
5110 Debt Service				
800 Other Objects				
830 Interest				624,573.16
Total Other Objects				\$624,573.16
900 Other Uses of Funds				
910 Redemption of Principal				1,930,000.00
Total Other Uses of Funds				\$1,930,000.00
Total 5110 Debt Service				\$2,554,573.16

General Fund (10)

	<u>Elementary</u>	<u>Secondary</u>	<u>Federal</u>	<u>Total</u>
5120 Debt Service – Refunded Bonds				
900 Other Uses of Funds				
910 Redemption of Principal				4,725,776.00
Total Other Uses of Funds				\$4,725,776.00
Total 5120 Debt Service – Refunded Bonds				\$4,725,776.00

LEA : 117089003 Wyalusing Area SD

Printed 6/20/2017 10:49:22 AM

General Fund (10)

	<u>Elementary</u>	<u>Secondary</u>	<u>Federal</u>	<u>Total</u>
5130 Refund of Prior Year Revenues / Receipts				
800 <u>Other Objects</u>				
880 Refunds of Prior Years' Receipts				5.41
Total Other Objects				\$5.41
Total 5130 Refund of Prior Year Revenues / Receipts				\$5.41

LEA : 117089003 Wyalusing Area SD

Printed 6/20/2017 10:49:21 AM

Capital Reserve Fund - § 1431 (32)

4000 Facilities Acquisition, Construction and Improvement Services

Total

300 Purchased Professional and Technical Services

330 Other Professional Services

88,155.07

Total Purchased Professional and Technical Services

\$88,155.07

Total 4000 Facilities Acquisition, Construction and Improvement Services

\$88,155.07

LEA : 117089003 Wyalusing Area SD

Printed 6/20/2017 10:49:21 AM

Capital Reserve Fund - § 1431 (32)

4600 Existing Building Improvement Services

Elementary

Secondary

Federal

Total

300 Purchased Professional and Technical Services

330 Other Professional Services

88,155.07

Total Purchased Professional and Technical Services

\$88,155.07

Total 4600 Existing Building Improvement Services

\$88,155.07

	<u>General Fund(10)</u>	<u>Public Purpose Trust(27)</u>	<u>Other Compt Approved (28)</u>	<u>Athletic / Activity(29)</u>	<u>Capital Reserve (690. 1850)(31)</u>
1000 Instruction					
1100 Regular Programs - Elementary / Secondary	8,375,367.34				
1200 Special Programs - Elementary / Secondary	2,578,595.10				
1300 Vocational Education	832,072.52				
1400 Other Instructional Programs - Elementary / Secondary	63,794.09				
1500 Nonpublic School Programs	10,752.54				
Total Instruction	\$11,860,581.59				
2000 Support Services					
2100 Support Services - Students	755,985.72				
2200 Support Services - Instructional Staff	852,413.21				
2300 Support Services - Administration	1,251,191.36				
2400 Support Services - Pupil Health	178,276.59				
2500 Support Services - Business	592,295.27				
2600 Operation and Maintenance of Plant Services	1,391,880.73				
2700 Student Transportation Services	1,418,369.51				
2800 Support Services - Central	8,991.80				
Total Support Services	\$6,449,404.19				
3000 Operation of Non-Instructional Services					
3200 Student Activities	385,642.41				
3300 Community Services	2,374.88				
Total Operation of Non-Instructional Services	\$388,017.29				
4000 Facilities Acquisition, Construction and Improvement Services					
4600 Existing Building Improvement Services					
Total Facilities Acquisition, Construction and Improvement Services					
5000 Other Expenditures and Financing Uses					
5100 Debt Service / Other Expenditures and Financing Uses	7,280,354.57				
Total Other Expenditures and Financing Uses	\$7,280,354.57				
TOTAL ACTUAL EXPENDITURES & OTHER FINANCING USES	\$25,978,357.64				

LEA : 117089003 Wyalusing Area SD

Printed 6/20/2017 10:49:23 AM

	<u>Capital Reserve (1431)(32)</u>	<u>Other Capital Projects Fund(39)</u>	<u>Debt Service(40)</u>	<u>Permanent(90)</u>	<u>Total</u>
1000 Instruction					
1100 Regular Programs - Elementary / Secondary					8,375,367.34
1200 Special Programs - Elementary / Secondary					2,578,595.10
1300 Vocational Education					832,072.52
1400 Other Instructional Programs - Elementary / Secondary					63,794.09
1500 Nonpublic School Programs					10,752.54
Total Instruction					\$11,860,581.59
2000 Support Services					
2100 Support Services - Students					755,985.72
2200 Support Services - Instructional Staff					852,413.21
2300 Support Services - Administration					1,251,191.36
2400 Support Services - Pupil Health					178,276.59
2500 Support Services - Business					592,295.27
2600 Operation and Maintenance of Plant Services					1,391,880.73
2700 Student Transportation Services					1,418,369.51
2800 Support Services - Central					8,991.80
Total Support Services					\$6,449,404.19
3000 Operation of Non-Instructional Services					
3200 Student Activities					385,642.41
3300 Community Services					2,374.88
Total Operation of Non-Instructional Services					\$388,017.29
4000 Facilities Acquisition, Construction and Improvement Services					
4600 Existing Building Improvement Services		88,155.07			88,155.07
Total Facilities Acquisition, Construction and Improvement Services		\$88,155.07			\$88,155.07
5000 Other Expenditures and Financing Uses					
5100 Debt Service / Other Expenditures and Financing Uses					7,280,354.57
Total Other Expenditures and Financing Uses					\$7,280,354.57
TOTAL ACTUAL EXPENDITURES & OTHER FINANCING USES		\$88,155.07			\$26,066,512.71

LEA : 117089003 Wyalusing Area SD

Printed 6/20/2017 10:49:28 AM

PSERS Salary Data (Salary Data should relate to the General Fund only)

Amount Description	Amount
Total Salary Base for salaries subject to PSERS withholding	8,694,309.76
Total Federally Funded salaries subject to PSERS withholding	486,292.21
	<hr/>

Title I Expenditure Data

Amount Description	Amount
Expenditures Funded with Current Title I Funds	295,756.00
Expenditures Funded with Carry over Title I Funds	
	<hr/>
Total Title I Expenditure Data	\$295,756.00
	<hr/>

Title I ARRA Amount

Amount Description	Amount
Portion of Total Title I Expenditures funded with ARRA Title I	
	<hr/>

Benefits for Staff Relative to Collective Bargaining Agreements

	OBJECT	COVERED	NOT COVERED	TOTAL
10 General Fund				
	211 Medical Insurance	1,875,631.46		1,875,631.46
	212 Dental Insurance			
	215 Eye Care Insurance			
	216 Prescription Insurance			
	271 Self-Insurance Medical Benefits	14,458.20		14,458.20
	272 Self-Insurance Dental Benefits			
	275 Self-Insurance Eye Care Benefits			
	276 Self-Insurance Prescription Benefits			
		FUND TOTAL	\$1,890,089.66	
50 Enterprise Fund	No Self Insurance data to report			
	211 Medical Insurance			
	212 Dental Insurance			
	215 Eye Care Insurance			
	216 Prescription Insurance			
	271 Self-Insurance Medical Benefits			
	272 Self-Insurance Dental Benefits			
	275 Self-Insurance Eye Care Benefits			
	276 Self-Insurance Prescription Benefits			
		FUND TOTAL		
60 Internal Service Fund	No Self Insurance data to report			
	211 Medical Insurance			
	212 Dental Insurance			
	215 Eye Care Insurance			
	216 Prescription Insurance			
	271 Self-Insurance Medical Benefits			
	272 Self-Insurance Dental Benefits			
	275 Self-Insurance Eye Care Benefits			
	276 Self-Insurance Prescription Benefits			
		FUND TOTAL		
Total of All Funds		\$1,890,089.66		\$1,890,089.66

LEA : 117089003 Wyalusing Area SD

Printed 6/20/2017 10:49:29 AM

Function	Special Education (Prior Year)	Nonspecial Education (Prior Year)	Total (Prior Year)	Special Education (Current Year)	Nonspecial Education (Current Year)	Total (Current Year)
2120 Guidance Services		451,002.02	451,002.02		481,563.70	481,563.70
2140 Psychological Services	278,367.40		278,367.40	269,822.02		269,822.02
2150 Speech Pathology and Audiology Services						
2160 Social Work Services						
2260 Instruction and Curriculum Development Services		63,410.85	63,410.85		49,876.53	49,876.53
2350 Legal and Accounting Services		79,315.96	79,315.96		14,984.84	14,984.84
2420 Medical Services		174,619.18	174,619.18		178,276.59	178,276.59
2440 Nursing Services						
2700 Student Transportation Services		1,447,043.62	1,447,043.62		1,418,369.51	1,418,369.51
Total	\$278,367.40	\$2,215,391.63	\$2,493,759.03	\$269,822.02	\$2,143,071.17	\$2,412,893.19

(PRINCIPAL AMOUNTS ONLY)

ALL GOVERNMENTAL FUND TYPES

	Short-Term Borrowing	General Obligation Bonds/Notes	Authority Building Obligations	Other Long-Term Debt	Other Post-Employment Benefits (OPEB)	Compensated Absences	Net Pension Liability	Total
1. Debt at Beginning of Fiscal Year		26,455,000.00				60,750.00	26,599,000.00	53,114,750.00
2. Additional Debt Incurred During Year		4,715,000.00				9,985.00	1,426,000.00	6,150,985.00
3. Retirements and Repayments		6,480,000.00						6,480,000.00
4. Debt at End of Fiscal Year		24,690,000.00				70,735.00	28,025,000.00	52,785,735.00
5. Accreted Interest at End Of Fiscal Year								
6. Total Debt and Accreted Interest		24,690,000.00				70,735.00	28,025,000.00	52,785,735.00
7. Current Portion P&I - Due within 1 year		2,614,695.00						2,614,695.00
8. Interest Paid during current fiscal year		624,573.16						624,573.16

(PRINCIPAL AMOUNTS ONLY)

ALL PROPRIETARY FUND TYPES

- 1. Debt at Beginning of Fiscal Year
- 2. Additional Debt Incurred During Year
- 3. Retirements and Repayments
- 4. Debt at End of Fiscal Year
- 5. Accreted Interest at End Of Fiscal Year
- 6. Total Debt and Accreted Interest
- 7. Current Portion P&I - Due within 1 year
- 8. Interest Paid during current fiscal year

Total Principal and Interest Payments Made by Your School - All Funds

Function	Fund		Principal (910)	Principal (920)	Interest (830)	Total (Principal +Interest)	Misc Other Uses (990)
5110	10	General Fund	1,930,000.00		624,573.16	2,554,573.16	
5110	20	Special Revenue Funds					
5110	30	Capital Projects Funds					
5110	40	Debt Service Fund					
5110	90	Permanent Fund					
5120	10	General Fund	4,725,776.00			4,725,776.00	
5120	20	Special Revenue Funds					
5120	30	Capital Projects Funds					
5120	40	Debt Service Fund					

Total Debt Payments - Governmental Funds			\$6,655,776.00		\$624,573.16	\$7,280,349.16	
---	--	--	-----------------------	--	---------------------	-----------------------	--

Function	Fund		Principal (910)	Principal (920)	Interest (830)	Total (Principal +Interest)
5110	50	Enterprise Fund				
5110	60	Internal Service Fund				
5120	50	Enterprise Fund				
5120	60	Internal Service Fund				

Total Debt Payments - Proprietary Funds						
--	--	--	--	--	--	--

Bond Details
Governmental Funds

Debt Category	Debt Issue Date (MM/YYYY)	Principal Amounts Only				Current Portion Due Within One Year (Principal and Interest)	Interest Paid During Fiscal Year
		Debt at Beginning of Fiscal Year	Additions	Reductions / Repayments	Debt at End of Fiscal Year		
General Obligation Bonds/Notes – CIB	09/2010	4,550,000.00		4,550,000.00			66,876.25
General Obligation Bonds/Notes – CIB	04/2012	7,590,000.00		625,000.00	6,965,000.00	800,340.00	182,840.00
General Obligation Bonds/Notes – CIB	12/2012	8,065,000.00		665,000.00	7,400,000.00	835,150.00	173,450.00
General Obligation Bonds/Notes – CIB	01/2014	2,740,000.00		160,000.00	2,580,000.00	253,175.00	69,215.00
General Obligation Bonds/Notes – CIB	01/2014	3,510,000.00		135,000.00	3,375,000.00	230,455.00	111,332.50
General Obligation Bonds/Notes – CIB	11/2015		4,715,000.00	345,000.00	4,370,000.00	495,575.00	20,859.41
Compensated Absences		60,750.00	9,985.00		70,735.00		
Net Pension Liability		26,599,000.00	1,426,000.00		28,025,000.00		
Totals for Debt Entered:		\$53,114,750.00	\$6,150,985.00	\$6,480,000.00	\$52,785,735.00	\$2,614,695.00	\$624,573.16

General Fund (10)

Section 1: Tuition/Purchased Services as Reported within Expenditure Detail

	Amount
Tuition Reported in General Fund Expenditures 1000-560	937,988.43
Purchased Services in General Fund Expenditures 1000-594 and 1000-597	

Section 1 Total	\$937,988.43
------------------------	---------------------

Section 2: Tuition Paid to Institution Types During Fiscal Year

	Tuition Paid For Nonspecial Education	Tuition Paid For Special Education	Total
1 1306 Institutions			
2 Institutionalized Children's Programs			
3 Juveniles Incarcerated in Adult Facilities			
4 Residential Treatment Facilities	38,856.91		38,856.91
5 Other Local Education Agencies	23,129.80	24,421.63	47,551.43
6 Brick and Mortar Charter Schools			
7 Cyber Charter Schools	292,949.39	231,582.01	524,531.40
8 Career and Technology Centers	327,048.69		327,048.69
9 Approved Private Schools			
10 PA Chartered Schools for the Deaf and Blind			
11 Private Residential Rehabilitative Institutions			
12 Juvenile Detention Centers			
13 Special Program Jointures			
14 Other Tuition Not Included Elsewhere In This Section			
Section 2 Total	\$681,984.79	\$256,003.64	\$937,988.43

Food Service / Cafeteria Operations Fund (51)

3000 Operation of Non-Instructional Services

Total

200 Personnel Services – Employee Benefits

250 Unemployment Compensation 2,203.00

Total Personnel Services – Employee Benefits \$2,203.00

400 Purchased Property Services

430 Repairs and Maintenance Services 2,227.00

Total Purchased Property Services \$2,227.00

600 Supplies

630 Food 482,536.00

Total Supplies \$482,536.00

700 Property

740 Depreciation 30,842.00

Total Property \$30,842.00

800 Other Objects

890 Miscellaneous Expenditures 10,724.00

Total Other Objects \$10,724.00

Total 3000 Operation of Non-Instructional Services \$528,532.00

Food Service / Cafeteria Operations Fund (51)

	<u>Elementary</u>	<u>Secondary</u>	<u>Federal</u>	<u>Total</u>
3100 Food Services				
200 <u>Personnel Services – Employee Benefits</u>				
250 Unemployment Compensation				2,203.00
Total Personnel Services – Employee Benefits				\$2,203.00
400 <u>Purchased Property Services</u>				
430 Repairs and Maintenance Services				2,227.00
Total Purchased Property Services				\$2,227.00
600 <u>Supplies</u>				
630 Food				482,536.00
Total Supplies				\$482,536.00
700 <u>Property</u>				
740 Depreciation				30,842.00
Total Property				\$30,842.00
800 <u>Other Objects</u>				
890 Miscellaneous Expenditures				10,724.00
Total Other Objects				\$10,724.00
Total 3100 Food Services				\$528,532.00

	<u>Food Service(51)</u>	<u>Child Care Operations(52)</u>	<u>Other Enterprise(58)</u>	<u>Internal Service(60)</u>	<u>Total</u>
3000 <u>Operation of Non-Instructional Services</u>					
3100 Food Services	528,532.00				528,532.00
Total Operation of Non-Instructional Services	\$528,532.00				\$528,532.00
TOTAL ACTUAL EXPENDITURES & OTHER FINANCING USES	\$528,532.00				\$528,532.00