

LEA Name : Wyalusing Area SD  
Address : 11450 Wyalusing New Albany Road  
Wyalusing , PA 18853

County : Bradford  
AUN Number : 117089003  
LEA Type : SD

## Annual Financial Report Accuracy Certification Statement

For Fiscal Year Ending  
6/30/2017

Pennsylvania Department of Education  
&  
Office of Comptroller Operations

PDE-2056: Intermediate Unit

PDE-2057: School District, AVTS/CTC, Charter School,  
and Special Program Jointure

**CERTIFICATION: By signing this page I agree that the electronic data submitted is a complete and accurate statement of the financial operations and status of the local education agency for the fiscal year. It has been prepared in accordance with generally accepted accounting principles and established Commonwealth of PA reporting guidelines.**

Chief School Administrator Signature

Date

2/13/18

Board Secretary Signature

Date

2/13/2018

Stephanie Heller

(570)746-1600

Ext :3009

Contact Person

Contact Person Telephone Number

sheller@wyalusingrams.com

(570)746-9156

Contact Person E-mail Address

Contact Person Fax Number

**Audit Certification**  
**Annual Financial Report:**  
For Fiscal Year Ending **6/30/2017**  
**(Pursuant to PA School Code Section 218(b))**

LEA Name : Wyalusing Area SD  
AUN Number : 117089003  
County : Bradford

<b>Audit Certification Due:</b> 12/31/2017
---

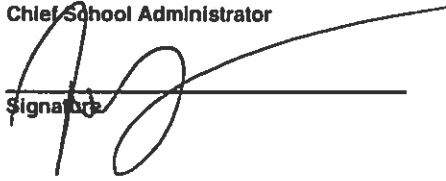
This certification is applicable to the Annual Financial Report data submitted through the Consolidated Financial Reporting System on: 11-30-17  
Date

**Auditing Firm: BUFFAMANTE WHIPPLE BUTTAFARO, P.C.**  
**130 SOUTH UNION STREET**  
**OLEAN, NY 14760**

**Auditor Contact Name: DAVID V. DITANNA**  
**Auditor Phone: (716) 372-1620**  
**Auditor E-mail: DVD@BWBCPA.COM**

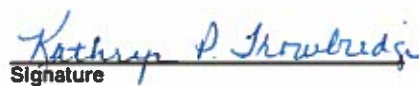
CERTIFICATION: By signing this page I agree that the financial statements of the school have been properly audited as noted above pursuant to Article XXIV, and in the auditor's professional opinion, the Annual Financial Report (PDE-2057) submitted on the date referenced is materially consistent with the audited financial statements.

Chief School Administrator

  
Signature

12/4/17  
Date

Board Secretary

  
Signature

12/4/17  
Date

Stephanie Heller

\_\_\_\_\_  
Contact Person

sheller@wyalusingrams.com

\_\_\_\_\_  
Contact Person E-mail Address

(570)746-1600

Ext :3009

\_\_\_\_\_  
Contact Person Telephone Number

(570)746-9156

\_\_\_\_\_  
Contact Person Fax Number

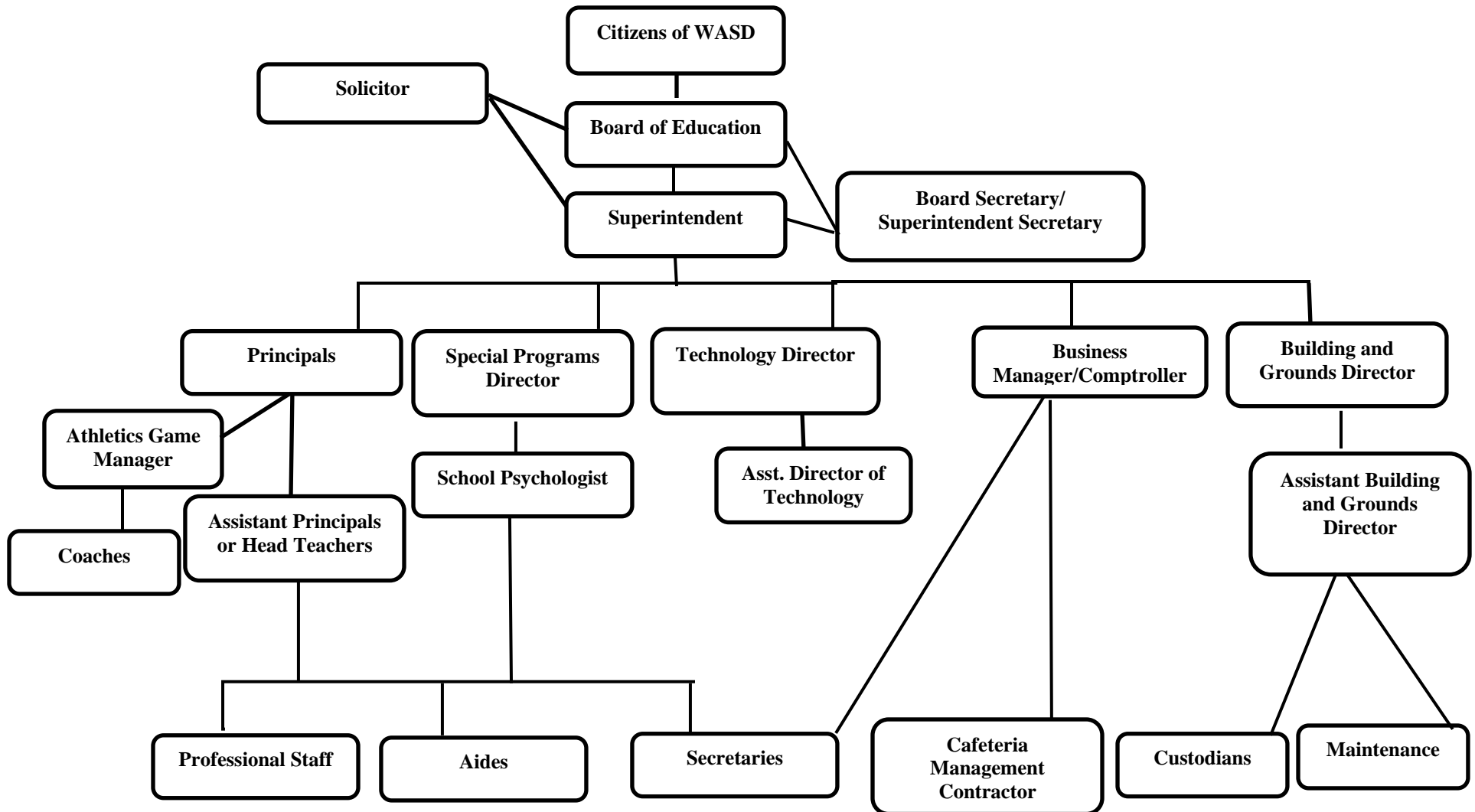
SECTION: LOCAL BOARD PROCEDURES

TITLE: ORGANIZATION CHART

ADOPTED: June 14, 2004

REVISED: April 11, 2016

# WYALUSING AREA SCHOOL DISTRICT



008. ORGANIZATIONAL CHART - Pg. 2

The Superintendent shall complete evaluations of the Principals, Assistant Principals, Special Education Director, School Psychologist, Technology Director, Business Manager/Comptroller, Buildings and Grounds Director, and Assistant Buildings and Grounds Director.

<u>Val Number</u>	<u>Description</u>	<u>Justification</u>
11075	Data has been reported on the NAG within Fund #28 – Other Comptroller Approved Special Revenue Fund. Please identify the title and function of this fund.	Special Revenue Fund #28 - Funds are committed or restricted for the specific purpose of operating a donated fitness facility.
11085	Data has been reported on the REG within Fund #28 – Other Comptroller Approved Special Revenue Fund. Please identify the title and function of this fund.	Special Revenue Fund #28 - Funds are committed or restricted for the specific purpose of operating a donated fitness facility.
50250	SOIN: No ending long term liability has been reported for Governmental Fund - Other Post Employment Benefits (OPEB). Correct data or verify that the LEA does not offer any type of OPEB to employees.	The district was working with a third party to evaluate if OPEB exists, however they were unable to perform this service until the 17-18 school year.
50410	SESS - 2140 Psychological Services: SESS Schedule amounts for Special Education vary from prior year by 40% or more. Correct the data or enter a justification.  SESS Schedule 2140: \$398,766.58 Prior Year SESS Schedule 2140: \$269,822.02	The district had to contract out the services of a Psychologist because the position was vacant.

Amounts Expressed in Whole Dollars

	<u>General Fund</u> <u>(10)</u>	<u>Public Purpose Trust</u> <u>(27)</u>	<u>Other Compt Approved</u> <u>(28)</u>	<u>Athletic / Activity</u> <u>(29)</u>	<u>Capital Reserve (690.</u> <u>1850)</u> <u>(31)</u>
<b>Assets And Deferred Outflows Of Resources</b>					
<b>Assets</b>					
0100 Cash and Cash Equivalents	696,438		14,203		
0110 Investments	2,414,206				
0120 Taxes Receivable	879,442				
0130 Due From Other Funds	1,756				
0141 Due From Other Governments	244,840				
0142 State Revenue Receivable	1,348,081				
0143 Federal Revenue Receivable	170,144				
0145 Other Intergovernmental Revenue Receivable					
0146 Due from Primary Government					
0147 Due from Component Unit					
0150 Other Receivables	399				
0170 Inventories					
0180 Prepaid Expenses (Expenditures)					
0190 Other Current Assets					
<b>Total Assets</b>	<b>\$5,755,306</b>		<b>\$14,203</b>		
0910 Deferred Outflows of Resources					
<b>Total Assets And Deferred Outflows Of Resources</b>	<b>\$5,755,306</b>		<b>\$14,203</b>		

Amounts Expressed in Whole Dollars

	<u>Capital Reserve (1431)</u> <u>(32)</u>	<u>Other Capital Projects</u> <u>Fund</u> <u>(39)</u>	<u>Debt Service</u> <u>(40)</u>	<u>Permanent</u> <u>(90)</u>	<u>Total Governmental</u> <u>Funds</u>
<b>Assets And Deferred Outflows Of Resources</b>					
<b>Assets</b>					
0100 Cash and Cash Equivalents	102,586				813,227
0110 Investments	626				2,414,832
0120 Taxes Receivable					879,442
0130 Due From Other Funds					1,756
0141 Due From Other Governments					244,840
0142 State Revenue Receivable					1,348,081
0143 Federal Revenue Receivable					170,144
0145 Other Intergovernmental Revenue Receivable					
0146 Due from Primary Government					
0147 Due from Component Unit					
0150 Other Receivables					399
0170 Inventories					
0180 Prepaid Expenses (Expenditures)					
0190 Other Current Assets					
<b>Total Assets</b>	<b>\$103,212</b>				<b>\$5,872,721</b>
0910 Deferred Outflows of Resources					
<b>Total Assets And Deferred Outflows Of Resources</b>	<b>\$103,212</b>				<b>\$5,872,721</b>

Amounts Expressed in Whole Dollars

	<u>General Fund</u> <u>(10)</u>	<u>Public Purpose Trust</u> <u>(27)</u>	<u>Other Compt Approved</u> <u>(28)</u>	<u>Athletic / Activity</u> <u>(29)</u>	<u>Capital Reserve (690.</u> <u>1850)</u> <u>(31)</u>
<b>Liabilities And Deferred Inflows Of Resources And Fund Balances</b>					
<b>Liabilities</b>					
0400 Due to Other Funds					
0411 Due to Other Governments					
0412 Due to Primary Government					
0413 Due to Component Unit					
0420 Accounts Payable	526,676				
0430 Contracts Payable					
0440 Current Portion of Long-Term Debt					
0450 Short-Term Payables					
0461 Accrued Salaries and Benefits	1,903,034				
0462 Payroll Deductions and Withholding	4,785				
0480 Unearned Revenues					
0490 Other Current Liabilities	125				
<b>Total Liabilities</b>	<b>\$2,434,620</b>				
0950 Deferred Inflows of Resources		374,000			
<b>Fund Balances</b>					
0810 Nonspendable Fund Balance					
0820 Restricted Fund Balance					
0830 Committed Fund Balance					
0840 Assigned Fund Balance			13	14,203	
0850 Unassigned Fund Balance	2,946,673				
<b>Total Fund Balances</b>	<b>\$2,946,686</b>		<b>\$14,203</b>		
<b>Total Liabilities, Deferred Inflows Of Resources And Fund Balances</b>	<b>\$5,755,306</b>		<b>\$14,203</b>		



Amounts Expressed in Whole Dollars

	<u>Capital Reserve (1431)</u> <u>(32)</u>	<u>Other Capital Projects</u> <u>Fund</u> <u>(39)</u>	<u>Debt Service</u> <u>(40)</u>	<u>Permanent</u> <u>(90)</u>	<u>Total Governmental</u> <u>Funds</u>
<b>Liabilities And Deferred Inflows Of Resources And Fund Balances</b>					
<b>Liabilities</b>					
0400 Due to Other Funds					
0411 Due to Other Governments					
0412 Due to Primary Government					
0413 Due to Component Unit					
0420 Accounts Payable	15,783				542,459
0430 Contracts Payable					
0440 Current Portion of Long-Term Debt					
0450 Short-Term Payables					
0461 Accrued Salaries and Benefits					1,903,034
0462 Payroll Deductions and Withholding					4,785
0480 Unearned Revenues					
0490 Other Current Liabilities					125
<b>Total Liabilities</b>	<b>\$15,783</b>				<b>\$2,450,403</b>
0950 Deferred Inflows of Resources					374,000
<b>Fund Balances</b>					
0810 Nonspendable Fund Balance					
0820 Restricted Fund Balance	87,429				87,429
0830 Committed Fund Balance					
0840 Assigned Fund Balance					14,216
0850 Unassigned Fund Balance					2,946,673
<b>Total Fund Balances</b>	<b>\$87,429</b>				<b>\$3,048,318</b>
<b>Total Liabilities, Deferred Inflows Of Resources And Fund Balances</b>	<b>\$103,212</b>				<b>\$5,872,721</b>

Amounts Expressed in Whole Dollars	<u>General Fund</u> <u>(10)</u>	<u>Public Purpose Trust</u> <u>(27)</u>	<u>Other Compt Approved</u> <u>(28)</u>	<u>Athletic / Activity</u> <u>(29)</u>	<u>Capital Reserve (690.</u> <u>1850)</u> <u>(31)</u>
<b>Revenues</b>					
6000 Revenue from Local Sources	9,974,152		14,203		
7000 Revenue from State Sources	11,851,774				
8000 Revenue from Federal Sources	430,191				
<b>Total Revenues</b>	<b>\$22,256,117</b>		<b>\$14,203</b>		
<b>Expenditures</b>					
1000 Instruction	12,149,273				
2000 Support Services	6,196,118				
3000 Operation of Non-Instructional Services	364,629				
4000 Facilities Acquisition, Construction and Improvement Services					
5110 Debt Service	2,615,475				
5130 Refund of Prior Year Revenues / Receipts					
<b>Total Expenditures</b>	<b>\$21,325,495</b>				
<b>Excess (Deficiency) Of Revenues Over Expenditures</b>	<b>\$930,622</b>		<b>\$14,203</b>		
<b>Other Financing Sources (Uses)</b>					
9110 Face Value of Bonds Issued					
9120 Proceeds from Refunding of Bonds					
9130 Bond Premiums					
9200 Proceeds from Extended-Term Financing					
9300 Interfund Transfers - IN					
9400 Sale of or Compensation for Loss of Fixed Assets					
9710 Transfers from Component Units					
9720 Transfers from Primary Governments					
9910 Other Financing Sources Not Listed in the 9000 Series					
9990 Insurance Recoveries					
5120 Debt Service – Refunded Bonds					
5150 Bond Discounts					
5200 Interfund Transfers – Out					
5300 Transfers Out to Component Units/Primary Governments					
<b>Total Other Financing Sources (Uses)</b>					

Amounts Expressed in Whole Dollars	<u>Capital Reserve (1431)</u> <u>(32)</u>	<u>Other Capital Projects</u> <u>Fund</u> <u>(39)</u>	<u>Debt Service</u> <u>(40)</u>	<u>Permanent</u> <u>(90)</u>	<u>Total Governmental</u> <u>Funds</u>
<b>Revenues</b>					
6000 Revenue from Local Sources	359				9,988,714
7000 Revenue from State Sources					11,851,774
8000 Revenue from Federal Sources					430,191
<b>Total Revenues</b>	<b>\$359</b>				<b>\$22,270,679</b>
<b>Expenditures</b>					
1000 Instruction					12,149,273
2000 Support Services					6,196,118
3000 Operation of Non-Instructional Services					364,629
4000 Facilities Acquisition, Construction and Improvement Services	31,035				31,035
5110 Debt Service					2,615,475
5130 Refund of Prior Year Revenues / Receipts					
<b>Total Expenditures</b>	<b>\$31,035</b>				<b>\$21,356,530</b>
<b>Excess (Deficiency) Of Revenues Over Expenditures</b>	<b>(\$30,676)</b>				<b>\$914,149</b>
<b>Other Financing Sources (Uses)</b>					
9110 Face Value of Bonds Issued					
9120 Proceeds from Refunding of Bonds					
9130 Bond Premiums					
9200 Proceeds from Extended-Term Financing					
9300 Interfund Transfers - IN					
9400 Sale of or Compensation for Loss of Fixed Assets					
9710 Transfers from Component Units					
9720 Transfers from Primary Governments					
9910 Other Financing Sources Not Listed in the 9000 Series					
9990 Insurance Recoveries					
5120 Debt Service – Refunded Bonds					
5150 Bond Discounts					
5200 Interfund Transfers – Out					
5300 Transfers Out to Component Units/Primary Governments					
<b>Total Other Financing Sources (Uses)</b>					

Amounts Expressed in Whole Dollars	<u>General Fund</u> <u>(10)</u>	<u>Public Purpose Trust</u> <u>(27)</u>	<u>Other Compt Approved</u> <u>(28)</u>	<u>Athletic / Activity</u> <u>(29)</u>	<u>Capital Reserve (690.</u> <u>1850)</u> <u>(31)</u>
<b>Special And Extraordinary Items</b>					
9920 Special Items – Gains					
9930 Extraordinary Items – Gains					
5520 Special Items – Losses					
5530 Extraordinary Items – Losses					
<b>Net Change In Fund Balances</b>	<b>\$930,622</b>		<b>\$14,203</b>		
<b>Fund Balance</b>					
0001 Fund Balance - Beginning of Fiscal Year	2,016,063				
<b>Fund Balance - End Of Year</b>	<b>\$2,946,685</b>		<b>\$14,203</b>		

Amounts Expressed in Whole Dollars	<u>Capital Reserve (1431)</u> <u>(32)</u>	<u>Other Capital Projects</u> <u>Fund</u> <u>(39)</u>	<u>Debt Service</u> <u>(40)</u>	<u>Permanent</u> <u>(90)</u>	<u>Total Governmental</u> <u>Funds</u>
<b>Special And Extraordinary Items</b>					
9920 Special Items – Gains					
9930 Extraordinary Items – Gains					
5520 Special Items – Losses					
5530 Extraordinary Items – Losses					
<b>Net Change In Fund Balances</b>	<b>(\$30,676)</b>				<b>\$914,149</b>
<b>Fund Balance</b>					
0001 Fund Balance - Beginning of Fiscal Year	118,105				2,134,168
<b>Fund Balance - End Of Year</b>	<b>\$87,429</b>				<b>\$3,048,317</b>

Amounts Expressed in Whole Dollars	<u>Food Service</u> <u>(51)</u>	<u>Child Care</u> <u>Operations</u> <u>(52)</u>	<u>Other Enterprise</u> <u>(58)</u>	<u>TOTAL</u>	<u>Internal Service</u> <u>(60)</u>
<b>Assets And Deferred Outflows Of Resources</b>					
<b>Current Assets</b>					
0100 Cash and Cash Equivalents	240,747			240,747	
0110 Investments					
0130 Due From Other Funds					
0141 Due From Other Governments					
0142 State Revenue Receivable	3,117			3,117	
0143 Federal Revenue Receivable	54,076			54,076	
0146 Due from Primary Government					
0147 Due from Component Unit					
0150 Other Receivables					
0170 Inventories	12,684			12,684	
0180 Prepaid Expenses (Expenditures)					
0190 Other Current Assets					
<b>Total Current Assets</b>	<b>\$310,624</b>			<b>\$310,624</b>	
<b>Noncurrent Assets</b>					
0211 Land					
0212 Site Improvements (Net)					
0220 Buildings and Building Improvements (Net)					
0230 Machinery, Equipment and Furniture (Net)	272,261			272,261	
0250 Construction in Progress					
0260 Long Term Prepayments					
0290 Other Noncurrent Assets					
<b>Total Noncurrent Assets</b>	<b>\$272,261</b>			<b>\$272,261</b>	
0910 Deferred Outflows of Resources					
<b>Total Assets And Deferred Outflows Of Resources</b>	<b>\$582,885</b>			<b>\$582,885</b>	

Amounts Expressed in Whole Dollars	<u>Food Service</u> <u>(51)</u>	<u>Child Care</u> <u>Operations</u> <u>(52)</u>	<u>Other Enterprise</u> <u>(58)</u>	<u>TOTAL</u>	<u>Internal Service</u> <u>(60)</u>
<b>Liabilities And Deferred Inflows Of Resources And Net Position</b>					
<b>Current Liabilities</b>					
0400 Due to Other Funds	1,756			1,756	
0411 Due to Other Governments					
0413 Due to Component Unit					
0420 Accounts Payable	26,378			26,378	
0430 Contracts Payable					
0440 Current Portion of Long-Term Debt					
0450 Short-Term Payables					
0461 Accrued Salaries and Benefits					
0462 Payroll Deductions and Withholding					
0480 Unearned Revenues	12,684			12,684	
0490 Other Current Liabilities					
<b>Total Current Liabilities</b>	<b>\$40,818</b>			<b>\$40,818</b>	
<b>Noncurrent Liabilities</b>					
0510 Bonds Payable					
0520 Extended-Term Financing Agreements Payable					
0530 Lease-Purchase Obligations					
0540 Accumulated Compensated Absences					
0550 Authority Lease Obligations					
0560 Other Post-Employment Benefits (OPEB)					
0570 Net Pension Liability					
0599 Other Noncurrent Liabilities					
<b>Total Noncurrent Liabilities</b>					
<b>Total Liabilities</b>	<b>\$40,818</b>			<b>\$40,818</b>	
0950 Deferred Inflows of Resources					
<b>Net Position</b>					
0791 Net Investment in Capital Assets	272,261			272,261	
0008 Restricted Net Position (0792 – 0798)					
0799 Unrestricted Net Position	269,806			269,806	
<b>Total Net Position</b>	<b>\$542,067</b>			<b>\$542,067</b>	
<b>Total Liabilities And Deferred Inflows Of Resources And Net Position</b>	<b>\$582,885</b>			<b>\$582,885</b>	

Amounts Expressed in Whole Dollars	<u>Food Service</u> <u>(51)</u>	<u>Child Care Operations</u> <u>(52)</u>	<u>Other Enterprise</u> <u>(58)</u>	<u>TOTAL</u>	<u>Internal Service</u> <u>(60)</u>
<b>Operating Revenues</b>					
6600 Food Service Revenue	174,362			174,362	
0071 Charges for Services					
0072 Other Operating Revenue					
<b>Total Operating Revenues</b>	<b>\$174,362</b>			<b>\$174,362</b>	
<b>Operating Expenses</b>					
100 Personnel Services – Salaries					
200 Personnel Services – Employee Benefits					
300 Purchased Professional and Technical Services					
400 Purchased Property Services	7,537			7,537	
500 Other Purchased Services					
600 Supplies	488,228			488,228	
740 Depreciation	31,003			31,003	
810 Dues and Fees					
890 Miscellaneous Expenditures					
<b>Total Operating Expenses</b>	<b>\$526,768</b>			<b>\$526,768</b>	
<b>Operating Income (Loss)</b>	<b>(\$352,406)</b>			<b>(\$352,406)</b>	
<b>Non Operating Revenues (Expenses)</b>					
6500 Earnings on Investments	78			78	
6920 Contributions and Donations from Private Sources					
6930 Gains or Losses on Sale of Fixed Assets					
6991 Refunds of a Prior Year Expenditure					
7000 Revenue from State Sources	20,623			20,623	
8000 Revenue from Federal Sources	393,560			393,560	
820 Claims and Judgments Against the LEA					
830 Interest					
<b>TOTAL Non Operating Revenues (Expenses)</b>	<b>\$414,261</b>			<b>\$414,261</b>	
<b>Income (Loss) Before Contributions And Transfers</b>	<b>\$61,855</b>			<b>\$61,855</b>	



Amounts Expressed in Whole Dollars	<u>Food Service</u> <u>(51)</u>	<u>Child Care Operations</u> <u>(52)</u>	<u>Other Enterprise</u> <u>(58)</u>	<u>TOTAL</u>	<u>Internal Service</u> <u>(60)</u>
<b>Contributions, Transfers, and Special and Extraordinary Items</b>					
5200 Interfund Transfers – Out					
5300 Transfers Out to Component Units/Primary Governments					
5520 Special Items – Losses					
5530 Extraordinary Items – Losses					
9300 Interfund Transfers - IN					
9500 Capital Contributions					
9700 Transfers IN From Component Units/Primary Governments					
9920 Special Items – Gains					
9930 Extraordinary Items – Gains					
<b>Change In Net Position</b>	<b>\$61,855</b>			<b>\$61,855</b>	
0002 Net Position - Beginning of Fiscal Year	480,212			480,212	
0003 Accounting Changes / Residual Equity Transfers					
<b>Net Position - End Of Year</b>	<b>\$542,067</b>			<b>\$542,067</b>	

Amounts Expressed in Whole Dollars	<u>Food Service</u> <u>(51)</u>	<u>Child Care Operations</u> <u>(52)</u>	<u>Other Enterprise</u> <u>(58)</u>	<u>TOTAL</u>	<u>Internal Service(60)</u>
<b>Cash Flows From Operating Activities</b>					
0011 Cash Receipts From Users	174,362			174,362	
0012 Cash Receipts From Assessments Made to Other Funds					
0013 Cash Receipts From Earnings on Investments					
0014 Cash Receipts From Other Operating Revenue					
0015 Cash Payments To Employees For Services					
0016 Cash Payments For Insurance Claims					
0017 Cash Payments To Suppliers For Goods and Services	445,349			445,349	
0018 Cash Payments For Other Operating Expenses					
<b>Net Cash Provided By (Used For) Operating Activities</b>	<b>(\$270,987)</b>			<b>(\$270,987)</b>	
<b>Cash Flows From Non-Capital Financing Activities</b>					
0021 Receipts From Local Sources - 6000					
0022 Receipts From State Sources - 7000	20,218			20,218	
0023 Receipts From Federal Sources -8000	346,031			346,031	
0024 Notes and Loans Received (Repaid)					
0025 Interest Paid on Notes/Loans - 5100-830					
0026 Operating Transfers In (Out)/Residual Equity Trans					
0027 Operating Transfers In (Out) Primary Government / Comp Unit					
0028 Receipts From Refund of Prior Year Expenditures - 6991					
0029 Special and Extraordinary Gains (losses)					
<b>Net Cash Prov By (Used for) Non-Capital Financing Activities</b>	<b>\$366,249</b>			<b>\$366,249</b>	
<b>Cash Flows From Capital and Related Financing Activities</b>					
0031 Payments For Fac Acq, Const, and Imp - 4000	(3,619)			(3,619)	
0032 Gain / (Loss) on Sale of Fixed Assets - 6930					
0033 Proceeds From Extended Term Financing - 9200					
0034 Principal Paid on Financing Agreements					
0035 Interest Paid on Financing Agreements - 5100-830					
0036 (Inc) Dec in Contributed Capital					
<b>Net Cash Prov By (Used for) Capital and Related Financing Activities</b>	<b>(\$3,619)</b>			<b>(\$3,619)</b>	
<b>Cash Flows From Investing Activities</b>					
0041 Earnings on Investments - 6500	78			78	
0042 Purchase of Inv Securities / Deposits to Inv Pools					
0043 Receipts From Investment Pool Withdrawals					
0044 Proceeds from Sale and Maturity of Inv Securities					
0045 Loans Received (Paid)					
<b>Net Cash Prov By (Used for) Investing Activities</b>	<b>\$78</b>			<b>\$78</b>	

LEA : 117089003 Wyalusing Area SD

Printed 5/3/2018 2:34:26 PM

	<u>Food Service</u> <u>(51)</u>	<u>Child Care Operations</u> <u>(52)</u>	<u>Other Enterprise</u> <u>(58)</u>	<u>TOTAL</u>	<u>Internal Service</u> <u>(60)</u>
<b>Net Increase (Decrease) in Cash Flows</b>	<b>91,721</b>			<b>91,721</b>	
0004 Cash and Cash Equivalents Beginning of Year	149,026			149,026	
<b>Cash and Cash Equivalents at Year End</b>	<b>\$240,747</b>			<b>\$240,747</b>	
<hr/>					
<b>Reconciliation of Operating Income (Loss) To Net Cash Provided by (Used For) Operating Activities</b>					
0005 Operating Income (Loss) per REP	(352,406)			(352,406)	
<b>Adjustments</b>					
0051 Depreciation and Net Amortization	31,003			31,003	
0052 Provision for Uncollectible Accounts					
0053 Other Adjustments	36,508			36,508	
<b>Effect of Changes in Assets, Liabilities, Deferred Outflows and Deferred Inflows</b>					
0054 (Inc) Dec In Accounts Receivable (0120-0150)					
0055 Advances to Other Funds (0160)					
0056 (Inc) Dec in Inventories (0170)	920			920	
0057 (Inc) Dec in Prepaid Expenses (0180)					
0058 (Inc) Dec in Other Current or Noncurrent Assets					
0064 Deferred Outflows (0910)					
0059 Inc (Dec) in Accounts Payable (0400-0450)	13,908			13,908	
0060 Inc (Dec) in Accrued Salaries/Benefits (0461)					
0065 Inc (Dec) in Net Pension Liabilities (0570)					
0066 Inc (Dec) in Other Postemp Benefit Oblig (0560)					
0061 Inc (Dec) in Payroll Deductions/Withholding (0462)					
0062 Inc (Dec) in Unearned Revenue (0480)	(920)			(920)	
0063 Inc (Dec) in Other Current or Noncurrent Liabilities					
0067 Deferred Inflows (0950)					
<b>Total Adjustments</b>	<b>\$81,419</b>			<b>\$81,419</b>	
<b>Cash Provided By (Used for) Total</b>	<b>(\$270,987)</b>			<b>(\$270,987)</b>	

COMBINED STATEMENT OF CASH FLOWS  
SCHEDULE OF NONCASH INVESTING, CAPITAL, AND FINANCING ACTIVITIES

Explanation of Transaction and Balance Sheet Effect	Amount
<b>Total</b>	

LEA : 117089003 Wyalusing Area SD

Printed 5/3/2018 2:34:27 PM

Amounts Expressed in Whole Dollars

	<u>Private Purpose Trust</u> (71)	<u>Investment Trust</u> (72)	<u>Pension Trust</u> (73)	<u>Activity</u> (81)
<b>Assets And Deferred Outflows Of Resources</b>				
<b>Assets</b>				
0100 Cash and Cash Equivalents	35,283			169,365
0110 Investments				
0130 Due From Other Funds				
0147 Due from Component Unit				
0150 Other Receivables				
0170 Inventories				
0180 Prepaid Expenses (Expenditures)				
0190 Other Current Assets				
0220 Buildings and Building Improvements (Net)				
0230 Machinery, Equipment and Furniture (Net)				
<b>Total Assets</b>	<b>\$35,283</b>			<b>\$169,365</b>
0910 Deferred Outflows of Resources				
<b>Total Assets And Deferred Outflows Of Resources</b>	<b>\$35,283</b>			<b>\$169,365</b>

LEA : 117089003 Wyalusing Area SD

Printed 5/3/2018 2:34:27 PM

Amounts Expressed in Whole Dollars

	<u>Other Agency</u> <u>(89)</u>	<u>Discrete Component Units</u> <u>(98)</u>	<u>Discrete Component Units</u> <u>(99)</u>	<u>Total Fiduciary Funds</u>
<b>Assets And Deferred Outflows Of Resources</b>				
<b>Assets</b>				
0100 Cash and Cash Equivalents				204,648
0110 Investments				
0130 Due From Other Funds				
0147 Due from Component Unit				
0150 Other Receivables				
0170 Inventories				
0180 Prepaid Expenses (Expenditures)				
0190 Other Current Assets				
0220 Buildings and Building Improvements (Net)				
0230 Machinery, Equipment and Furniture (Net)				
<b>Total Assets</b>				<b>\$204,648</b>
0910 Deferred Outflows of Resources				
<b>Total Assets And Deferred Outflows Of Resources</b>				<b>\$204,648</b>

LEA : 117089003 Wyalusing Area SD

Printed 5/3/2018 2:34:27 PM

Amounts Expressed in Whole Dollars	<u>Private Purpose Trust</u> (71)	<u>Investment Trust</u> (72)	<u>Pension Trust</u> (73)	<u>Activity</u> (81)
<b>Liabilities, Deferred Inflows Of Resources And Net Position</b>				
<b>Liabilities</b>				
0400 Due to Other Funds				
0411 Due to Other Governments				
0412 Due to Primary Government				
0413 Due to Component Unit				
0420 Accounts Payable				
0430 Contracts Payable				
0450 Short-Term Payables				
0461 Accrued Salaries and Benefits				
0462 Payroll Deductions and Withholding				
0480 Unearned Revenues				
0490 Other Current Liabilities				169,365
<b>Total Liabilities</b>				<b>\$169,365</b>
0950 Deferred Inflows of Resources				
<b>Net Position</b>				
0791 Net Investment in Capital Assets				
0009 Restricted Net Position (0792 – 0798)	35,283			
0799 Unrestricted Net Position				
<b>Total Net Position</b>	<b>\$35,283</b>			
<b>Total Liabilities, Deferred Inflows Of Resources And Net Position</b>	<b>\$35,283</b>			<b>\$169,365</b>

LEA : 117089003 Wyalusing Area SD

Printed 5/3/2018 2:34:27 PM

Amounts Expressed in Whole Dollars

<u>Other Agency</u>	<u>Discrete Component Units</u>	<u>Discrete Component Units</u>	<u>Total Fiduciary Funds</u>
(89)	(98)	(99)	

**Liabilities, Deferred Inflows Of Resources And Net Position**

**Liabilities**

0400 Due to Other Funds			
0411 Due to Other Governments			
0412 Due to Primary Government			
0413 Due to Component Unit			
0420 Accounts Payable			
0430 Contracts Payable			
0450 Short-Term Payables			
0461 Accrued Salaries and Benefits			
0462 Payroll Deductions and Withholding			
0480 Unearned Revenues			
0490 Other Current Liabilities			169,365

<b>Total Liabilities</b>			<b>\$169,365</b>
--------------------------	--	--	------------------

0950 Deferred Inflows of Resources

**Net Position**

0791 Net Investment in Capital Assets			
0009 Restricted Net Position (0792 – 0798)			35,283
0799 Unrestricted Net Position			

<b>Total Net Position</b>			<b>\$35,283</b>
---------------------------	--	--	-----------------

<b>Total Liabilities, Deferred Inflows Of Resources And Net Position</b>			<b>\$204,648</b>
--	--	--	------------------



Amounts Expressed in Whole Dollars	<u>Private Purpose Trust</u> (71)	<u>Investment Trust</u> (72)	<u>Pension Trust</u> (73)	<u>Discrete Component</u> <u>Units</u> (98)	<u>Discrete Component</u> <u>Units</u> (99)	<u>Total Fiduciary</u> <u>Funds</u>
<b>Additions</b>						
0091 Gifts and Contributions						
0092 Other Additions	1					1
<b>Deductions</b>						
0093 Scholarships Awarded	63					63
0094 Other Deductions						
<b>Change In Net Position</b>	<b>(\$62)</b>					<b>(\$62)</b>
0006 Net Position – Beginning of Fiscal Year	35,345					35,345
0007 Net Position Held in Trust for Pension Benefits						
<b>Net Position - End of Fiscal Year</b>	<b>\$35,283</b>					<b>\$35,283</b>

	<u>Revenue Reported In Current Year</u>	<u>Current Year Tax Accrual</u>	<u>Prior Year Tax Accrual</u>	<u>Taxes Collected In Current Year</u>
<b><u>Revenue from Local Sources</u></b>				
6111 Current Real Estate Taxes	7,390,917.37			7,390,917.37
6113 Public Utility Realty Taxes	10,228.64			10,228.64
6114 Payments in Lieu of Current Taxes - State / Local	22,887.05			22,887.05
6120 Current Per Capita Taxes, Section 679	24,180.80	2,112.00	3,030.00	25,098.80
6141 Current Act 511 Per Capita Taxes	24,180.80	2,112.00	3,030.00	25,098.80
6151 Current Act 511 Earned Income Taxes	1,450,023.91	310,538.00	296,432.00	1,435,917.91
6153 Current Act 511 Real Estate Transfer Taxes	91,238.64	10,681.00	15,429.00	95,986.64
6411 Delinquent Real Estate Taxes	545,518.18	180,000.00	206,000.00	571,518.18
6420 Delinquent Per Capita Taxes, Section 679	(802.50)			(802.50)
6440 Delinquent Local Enabling Taxes - Flat Rate Assessments	(803.50)			(803.50)
6452 Delinquent Act 511 Occupation Taxes	1,265.00			1,265.00
6500 Earnings on Investments	18,887.34			
6700 Revenues from LEA Activities	48,546.32			
6832 Federal IDEA Revenue Received as Pass Through	248,851.00			
6910 Rentals	63,188.06			
6999 Other Revenues Not Specified Above	35,845.16			
<b>TOTAL Revenue from Local Sources</b>	<b>\$9,974,152.27</b>	<b>\$505,443.00</b>	<b>\$523,921.00</b>	<b>\$9,577,312.39</b>

**Revenue Reported  
In Current Year**

**Revenue from State Sources**

7110 Basic Education Funding	6,844,951.19		
7160 Tuition for Orphans Subsidy	38,429.72		
7271 Special Education funds for School-Aged Pupils	900,826.98		
7311 Pupil Transportation Subsidy	1,041,681.81		
7312 Nonpublic and Charter School Pupil Transportation Subsidy	18,480.00		
7320 Rental and Sinking Fund Payments / Building Reimbursement Subsidy	687,015.14		
7340 State Property Tax Reduction Allocation	298,116.18		
7505 Ready to Learn Block Grant	245,917.00		
7810 State Share of Social Security and Medicare Taxes	416,526.59		
7820 State Share of Retirement Contributions	1,359,829.44		
<b>TOTAL Revenue from State Sources</b>	<b>\$11,851,774.05</b>		

**Revenue Reported  
In Current Year**

**Revenue from Federal Sources**

8514 NCLB, Title I - Improving the Academic Achievement of the Disadvantaged	280,496.35			
8515 NCLB, Title II - Preparing, Training and Recruiting High Quality Teachers and Principals	87,979.63			
8810 School-Based Access Medicaid Reimbursement Program (SBAP) Reimbursements (Access)	55,383.37			
8820 Medical Assistance Reimbursement for Administrative Claiming (Quarterly) Program	6,331.90			
<b>TOTAL Revenue from Federal Sources</b>	<b>\$430,191.25</b>			
<b>TOTAL FROM ALL SOURCES</b>	<b>\$22,256,117.57</b>	<b>\$505,443.00</b>	<b>\$523,921.00</b>	<b>\$9,577,312.39</b>

Revenue from Local Sources	9,974,152.27
Revenue from State Sources	11,851,774.05
Revenue from Federal Sources	430,191.25
Other Financing Sources	
<b>TOTAL FROM ALL SOURCES</b>	<b>\$22,256,117.57</b>

General Fund (10)

	<u>Total</u>
<b>1000 Instruction</b>	
<b>100 Personnel Services – Salaries</b>	
100 Personnel Services – Salaries	6,580,763.86
<b>Total Personnel Services – Salaries</b>	<b>\$6,580,763.86</b>
<b>200 Personnel Services – Employee Benefits</b>	
210 Group Insurance – Contracted Provider	1,238,507.95
220 Social Security Contributions	476,396.89
230 PSERS Retirement Contributions	1,884,305.38
250 Unemployment Compensation	4,741.24
260 Workers’ Compensation	34,495.95
270 Group Insurance – Self-Insurance	16,091.65
<b>Total Personnel Services – Employee Benefits</b>	<b>\$3,654,539.06</b>
<b>300 Purchased Professional and Technical Services</b>	
322 Professional Educational Services – Ius	300,184.62
323 Professional Educational Services – Other Educational Agencies	11,335.92
329 Professional Educational Services – Other	72,131.87
330 Other Professional Services	137,874.96
<b>Total Purchased Professional and Technical Services</b>	<b>\$521,527.37</b>
<b>400 Purchased Property Services</b>	
430 Repairs and Maintenance Services	54,495.58
<b>Total Purchased Property Services</b>	<b>\$54,495.58</b>
<b>500 Other Purchased Services</b>	
510 Student Transportation Services	55,155.05
561 Tuition To Other School Districts Within the State	32,010.48
562 Tuition To Pennsylvania Charter Schools	650,750.46
564 Tuition To Career and Technology Centers	351,378.04
568 Tuition To Private Residential Rehabilitative Institutions (PRRI) [In-State] and Detention Centers	20,966.69
569 Tuition – Other	23,160.00
580 Travel	1,451.99
<b>Total Other Purchased Services</b>	<b>\$1,134,872.71</b>
<b>600 Supplies</b>	
610 General Supplies	83,063.95
640 Books and Periodicals	84,419.49
<b>Total Supplies</b>	<b>\$167,483.44</b>
<b>700 Property</b>	
752 Capital Equipment – Original and Additional	7,049.21
758 Capitalized Technology Software - Original	318.54
762 Capitalized Equipment - Replacement	27,085.43
<b>Total Property</b>	<b>\$34,453.18</b>
<b>800 Other Objects</b>	
810 Dues and Fees	1,137.50
<b>Total Other Objects</b>	<b>\$1,137.50</b>
<b>Total 1000 Instruction</b>	<b>\$12,149,272.70</b>

**General Fund (10)**

	<u>Elementary</u>	<u>Secondary</u>	<u>Federal</u>	<u>Total</u>
<b>1100 Regular Programs – Elementary / Secondary</b>				
<b>100 Personnel Services – Salaries</b>				
100 Personnel Services – Salaries	2,671,649.91	2,139,622.27	207,587.74	5,018,859.92
<b>Total Personnel Services – Salaries</b>	<b>\$2,671,649.91</b>	<b>\$2,139,622.27</b>	<b>\$207,587.74</b>	<b>\$5,018,859.92</b>
<b>200 Personnel Services – Employee Benefits</b>				
210 Group Insurance – Contracted Provider	419,915.74	316,968.67	82,851.27	819,735.68
220 Social Security Contributions	193,043.21	152,243.83	15,314.87	360,601.91
230 PSERS Retirement Contributions	748,791.13	612,212.65	62,007.85	1,423,011.63
250 Unemployment Compensation	1,832.71	1,307.35	178.53	3,318.59
260 Workers' Compensation	13,942.36	11,016.25	1,121.15	26,079.76
270 Group Insurance – Self-Insurance	7,685.83	7,685.82		15,371.65
<b>Total Personnel Services – Employee Benefits</b>	<b>\$1,385,210.98</b>	<b>\$1,101,434.57</b>	<b>\$161,473.67</b>	<b>\$2,648,119.22</b>
<b>300 Purchased Professional and Technical Services</b>				
329 Professional Educational Services – Other		13,370.72		13,370.72
330 Other Professional Services	10,805.35	14,849.40		25,654.75
<b>Total Purchased Professional and Technical Services</b>	<b>\$10,805.35</b>	<b>\$28,220.12</b>		<b>\$39,025.47</b>
<b>400 Purchased Property Services</b>				
430 Repairs and Maintenance Services	28,006.85	25,298.73		53,305.58
<b>Total Purchased Property Services</b>	<b>\$28,006.85</b>	<b>\$25,298.73</b>		<b>\$53,305.58</b>
<b>500 Other Purchased Services</b>				
510 Student Transportation Services	484.56	11,109.74		11,594.30
562 Tuition To Pennsylvania Charter Schools	129,870.00	265,936.22		395,806.22
568 Tuition To Private Residential Rehabilitative Institutions (PRRI) [In-State] and Detention Centers		5,563.25		5,563.25
569 Tuition – Other		23,160.00		23,160.00
580 Travel	242.36	143.91		386.27
<b>Total Other Purchased Services</b>	<b>\$130,596.92</b>	<b>\$305,913.12</b>		<b>\$436,510.04</b>
<b>600 Supplies</b>				
610 General Supplies	28,852.00	33,011.65		61,863.65
640 Books and Periodicals	56,728.16	24,304.89		81,033.05
<b>Total Supplies</b>	<b>\$85,580.16</b>	<b>\$57,316.54</b>		<b>\$142,896.70</b>
<b>700 Property</b>				
752 Capital Equipment – Original and Additional	(11,000.00)	10,499.20		(500.80)
762 Capitalized Equipment - Replacement	497.95	24,214.46		24,712.41
<b>Total Property</b>	<b>(\$10,502.05)</b>	<b>\$34,713.66</b>		<b>\$24,211.61</b>
<b>Total 1100 Regular Programs – Elementary / Secondary</b>	<b>\$4,301,348.12</b>	<b>\$3,692,519.01</b>	<b>\$369,061.41</b>	<b>\$8,362,928.54</b>

**General Fund (10)**

**1110 Regular Programs**

	<u>Elementary</u>	<u>Secondary</u>	<u>Federal</u>	<u>Total</u>
<b>100 Personnel Services – Salaries</b>				
100 Personnel Services – Salaries	2,671,649.91	2,139,622.27	207,587.74	5,018,859.92
<b>Total Personnel Services – Salaries</b>	<b>\$2,671,649.91</b>	<b>\$2,139,622.27</b>	<b>\$207,587.74</b>	<b>\$5,018,859.92</b>
<b>200 Personnel Services – Employee Benefits</b>				
210 Group Insurance – Contracted Provider	419,915.74	316,968.67	82,851.27	819,735.68
220 Social Security Contributions	193,043.21	152,243.83	15,314.87	360,601.91
230 PSERS Retirement Contributions	748,791.13	612,212.65	62,007.85	1,423,011.63
250 Unemployment Compensation	1,832.71	1,307.35	178.53	3,318.59
260 Workers' Compensation	13,942.36	11,016.25	1,121.15	26,079.76
270 Group Insurance – Self-Insurance	7,685.83	7,685.82		15,371.65
<b>Total Personnel Services – Employee Benefits</b>	<b>\$1,385,210.98</b>	<b>\$1,101,434.57</b>	<b>\$161,473.67</b>	<b>\$2,648,119.22</b>
<b>300 Purchased Professional and Technical Services</b>				
329 Professional Educational Services – Other		13,370.72		13,370.72
330 Other Professional Services	10,805.35	14,849.40		25,654.75
<b>Total Purchased Professional and Technical Services</b>	<b>\$10,805.35</b>	<b>\$28,220.12</b>		<b>\$39,025.47</b>
<b>400 Purchased Property Services</b>				
430 Repairs and Maintenance Services	28,006.85	25,298.73		53,305.58
<b>Total Purchased Property Services</b>	<b>\$28,006.85</b>	<b>\$25,298.73</b>		<b>\$53,305.58</b>
<b>500 Other Purchased Services</b>				
510 Student Transportation Services	484.56	11,109.74		11,594.30
562 Tuition To Pennsylvania Charter Schools	129,870.00	265,936.22		395,806.22
568 Tuition To Private Residential Rehabilitative Institutions (PRRI) [In-State] and Detention Centers		5,563.25		5,563.25
569 Tuition – Other		23,160.00		23,160.00
580 Travel	242.36	143.91		386.27
<b>Total Other Purchased Services</b>	<b>\$130,596.92</b>	<b>\$305,913.12</b>		<b>\$436,510.04</b>
<b>600 Supplies</b>				
610 General Supplies	28,852.00	33,011.65		61,863.65
640 Books and Periodicals	56,728.16	24,304.89		81,033.05
<b>Total Supplies</b>	<b>\$85,580.16</b>	<b>\$57,316.54</b>		<b>\$142,896.70</b>
<b>700 Property</b>				
752 Capital Equipment – Original and Additional	(11,000.00)	10,499.20		(500.80)
762 Capitalized Equipment - Replacement	497.95	24,214.46		24,712.41
<b>Total Property</b>	<b>(\$10,502.05)</b>	<b>\$34,713.66</b>		<b>\$24,211.61</b>
<b>Total 1110 Regular Programs</b>	<b>\$4,301,348.12</b>	<b>\$3,692,519.01</b>	<b>\$369,061.41</b>	<b>\$8,362,928.54</b>



**General Fund (10)**

**1200 Special Programs – Elementary / Secondary**

	<u>Elementary</u>	<u>Secondary</u>	<u>Federal</u>	<u>Total</u>
<b>100 Personnel Services – Salaries</b>				
100 Personnel Services – Salaries	488,537.24	577,114.12	199,677.00	1,265,328.36
<b>Total Personnel Services – Salaries</b>	<b>\$488,537.24</b>	<b>\$577,114.12</b>	<b>\$199,677.00</b>	<b>\$1,265,328.36</b>
<b>200 Personnel Services – Employee Benefits</b>				
210 Group Insurance – Contracted Provider	182,619.97	115,205.58	50,210.94	348,036.49
220 Social Security Contributions	51,045.47	42,836.41		93,881.88
230 PSERS Retirement Contributions	154,159.75	170,092.43	48,367.46	372,619.64
250 Unemployment Compensation	710.43	534.59		1,245.02
260 Workers' Compensation	3,697.30	3,117.12		6,814.42
270 Group Insurance – Self-Insurance		720.00		720.00
<b>Total Personnel Services – Employee Benefits</b>	<b>\$392,232.92</b>	<b>\$332,506.13</b>	<b>\$98,578.40</b>	<b>\$823,317.45</b>
<b>300 Purchased Professional and Technical Services</b>				
322 Professional Educational Services – Ius	89,768.76	202,698.22		292,466.98
329 Professional Educational Services – Other	15,050.00	43,711.15		58,761.15
330 Other Professional Services	94,219.39	17,900.82		112,120.21
<b>Total Purchased Professional and Technical Services</b>	<b>\$199,038.15</b>	<b>\$264,310.19</b>		<b>\$463,348.34</b>
<b>500 Other Purchased Services</b>				
510 Student Transportation Services	10,238.39	17,202.93		27,441.32
561 Tuition To Other School Districts Within the State		32,010.48		32,010.48
562 Tuition To Pennsylvania Charter Schools	88,195.81	166,748.43		254,944.24
568 Tuition To Private Residential Rehabilitative Institutions (PRRI) [In-State] and Detention Centers		6,782.40		6,782.40
580 Travel	73.44	(42.00)		31.44
<b>Total Other Purchased Services</b>	<b>\$98,507.64</b>	<b>\$222,702.24</b>		<b>\$321,209.88</b>
<b>600 Supplies</b>				
610 General Supplies	3,511.70	4,184.85		7,696.55
640 Books and Periodicals	854.92	2,531.52		3,386.44
<b>Total Supplies</b>	<b>\$4,366.62</b>	<b>\$6,716.37</b>		<b>\$11,082.99</b>
<b>700 Property</b>				
752 Capital Equipment – Original and Additional	7,434.48	115.53		7,550.01
758 Capitalized Technology Software - Original		318.54		318.54
<b>Total Property</b>	<b>\$7,434.48</b>	<b>\$434.07</b>		<b>\$7,868.55</b>
<b>800 Other Objects</b>				
810 Dues and Fees	568.75	568.75		1,137.50
<b>Total Other Objects</b>	<b>\$568.75</b>	<b>\$568.75</b>		<b>\$1,137.50</b>
<b>Total 1200 Special Programs – Elementary / Secondary</b>	<b>\$1,190,685.80</b>	<b>\$1,404,351.87</b>	<b>\$298,255.40</b>	<b>\$2,893,293.07</b>

**General Fund (10)**

**1210 Life Skills Support**

	<u>Elementary</u>	<u>Secondary</u>	<u>Federal</u>	<u>Total</u>
<b>100 Personnel Services – Salaries</b>				
100 Personnel Services – Salaries	104,922.26	185,110.61		290,032.87
<b>Total Personnel Services – Salaries</b>	<b>\$104,922.26</b>	<b>\$185,110.61</b>		<b>\$290,032.87</b>
<b>200 Personnel Services – Employee Benefits</b>				
210 Group Insurance – Contracted Provider	36,342.03	15,840.22		52,182.25
220 Social Security Contributions	7,685.84	13,810.38		21,496.22
230 PSERS Retirement Contributions	31,381.33	53,635.66		85,016.99
250 Unemployment Compensation	134.30	195.54		329.84
260 Workers' Compensation	566.79	999.92		1,566.71
<b>Total Personnel Services – Employee Benefits</b>	<b>\$76,110.29</b>	<b>\$84,481.72</b>		<b>\$160,592.01</b>
<b>300 Purchased Professional and Technical Services</b>				
322 Professional Educational Services – lus		2,033.90		2,033.90
329 Professional Educational Services – Other		3,350.00		3,350.00
330 Other Professional Services	28,432.97	7,105.07		35,538.04
<b>Total Purchased Professional and Technical Services</b>	<b>\$28,432.97</b>	<b>\$12,488.97</b>		<b>\$40,921.94</b>
<b>500 Other Purchased Services</b>				
510 Student Transportation Services	3,180.27	16,574.73		19,755.00
561 Tuition To Other School Districts Within the State		32,010.48		32,010.48
580 Travel	73.44			73.44
<b>Total Other Purchased Services</b>	<b>\$3,253.71</b>	<b>\$48,585.21</b>		<b>\$51,838.92</b>
<b>600 Supplies</b>				
610 General Supplies	146.18	1,577.73		1,723.91
640 Books and Periodicals	854.92			854.92
<b>Total Supplies</b>	<b>\$1,001.10</b>	<b>\$1,577.73</b>		<b>\$2,578.83</b>
<b>700 Property</b>				
752 Capital Equipment – Original and Additional	4,452.00	115.53		4,567.53
758 Capitalized Technology Software - Original		60.58		60.58
<b>Total Property</b>	<b>\$4,452.00</b>	<b>\$176.11</b>		<b>\$4,628.11</b>
<b>Total 1210 Life Skills Support</b>	<b>\$218,172.33</b>	<b>\$332,420.35</b>		<b>\$550,592.68</b>

**General Fund (10)**

	<u>Elementary</u>	<u>Secondary</u>	<u>Federal</u>	<u>Total</u>
<b>1220 Sensory Support</b>				
<b>100 Personnel Services – Salaries</b>				
100 Personnel Services – Salaries	32,062.60	30,919.15		62,981.75
<b>Total Personnel Services – Salaries</b>	<b>\$32,062.60</b>	<b>\$30,919.15</b>		<b>\$62,981.75</b>
<b>200 Personnel Services – Employee Benefits</b>				
210 Group Insurance – Contracted Provider	32.40	32.40		64.80
220 Social Security Contributions	2,452.82	2,365.29		4,818.11
230 PSERS Retirement Contributions	9,021.47	8,682.99		17,704.46
250 Unemployment Compensation	21.22	21.00		42.22
260 Workers' Compensation	173.17	167.00		340.17
<b>Total Personnel Services – Employee Benefits</b>	<b>\$11,701.08</b>	<b>\$11,268.68</b>		<b>\$22,969.76</b>
<b>300 Purchased Professional and Technical Services</b>				
322 Professional Educational Services – lus	36,403.34	11,367.33		47,770.67
330 Other Professional Services	4,175.64			4,175.64
<b>Total Purchased Professional and Technical Services</b>	<b>\$40,578.98</b>	<b>\$11,367.33</b>		<b>\$51,946.31</b>
<b>600 Supplies</b>				
610 General Supplies	508.43			508.43
<b>Total Supplies</b>	<b>\$508.43</b>			<b>\$508.43</b>
<b>Total 1220 Sensory Support</b>	<b>\$84,851.09</b>	<b>\$53,555.16</b>		<b>\$138,406.25</b>

**General Fund (10)**

**1230 Emotional Support**

	<u>Elementary</u>	<u>Secondary</u>	<u>Federal</u>	<u>Total</u>
<b>100 Personnel Services – Salaries</b>				
100 Personnel Services – Salaries	100,699.65	73,505.99		174,205.64
<b>Total Personnel Services – Salaries</b>	<b>\$100,699.65</b>	<b>\$73,505.99</b>		<b>\$174,205.64</b>
<b>200 Personnel Services – Employee Benefits</b>				
210 Group Insurance – Contracted Provider	30,147.68	20,109.36		50,257.04
220 Social Security Contributions	7,182.15	5,339.42		12,521.57
230 PSERS Retirement Contributions	28,286.51	21,767.90		50,054.41
250 Unemployment Compensation	165.71	86.39		252.10
260 Workers' Compensation	524.00	396.97		920.97
270 Group Insurance – Self-Insurance		720.00		720.00
<b>Total Personnel Services – Employee Benefits</b>	<b>\$66,306.05</b>	<b>\$48,420.04</b>		<b>\$114,726.09</b>
<b>300 Purchased Professional and Technical Services</b>				
322 Professional Educational Services – Ius	15,059.35	16,569.00		31,628.35
330 Other Professional Services	12,198.89	10,057.65		22,256.54
<b>Total Purchased Professional and Technical Services</b>	<b>\$27,258.24</b>	<b>\$26,626.65</b>		<b>\$53,884.89</b>
<b>500 Other Purchased Services</b>				
510 Student Transportation Services	2,081.08	494.65		2,575.73
<b>Total Other Purchased Services</b>	<b>\$2,081.08</b>	<b>\$494.65</b>		<b>\$2,575.73</b>
<b>600 Supplies</b>				
610 General Supplies	531.04			531.04
<b>Total Supplies</b>	<b>\$531.04</b>			<b>\$531.04</b>
<b>Total 1230 Emotional Support</b>	<b>\$196,876.06</b>	<b>\$149,047.33</b>		<b>\$345,923.39</b>

**General Fund (10)**

**1240 Academic Support**

	<u>Elementary</u>	<u>Secondary</u>	<u>Federal</u>	<u>Total</u>
<b>100 Personnel Services – Salaries</b>				
100 Personnel Services – Salaries	250,852.73	287,578.37	199,677.00	738,108.10
<b>Total Personnel Services – Salaries</b>	<b>\$250,852.73</b>	<b>\$287,578.37</b>	<b>\$199,677.00</b>	<b>\$738,108.10</b>
<b>200 Personnel Services – Employee Benefits</b>				
210 Group Insurance – Contracted Provider	116,097.86	79,223.60	50,210.94	245,532.40
220 Social Security Contributions	33,724.66	21,321.32		55,045.98
230 PSERS Retirement Contributions	85,470.44	86,005.88	48,367.46	219,843.78
250 Unemployment Compensation	389.20	231.66		620.86
260 Workers' Compensation	2,433.34	1,553.23		3,986.57
<b>Total Personnel Services – Employee Benefits</b>	<b>\$238,115.50</b>	<b>\$188,335.69</b>	<b>\$98,578.40</b>	<b>\$525,029.59</b>
<b>300 Purchased Professional and Technical Services</b>				
322 Professional Educational Services – lus	23,676.35	23,093.29		46,769.64
329 Professional Educational Services – Other	15,050.00	8,537.60		23,587.60
330 Other Professional Services	49,411.89	738.10		50,149.99
<b>Total Purchased Professional and Technical Services</b>	<b>\$88,138.24</b>	<b>\$32,368.99</b>		<b>\$120,507.23</b>
<b>500 Other Purchased Services</b>				
510 Student Transportation Services	4,977.04	133.55		5,110.59
562 Tuition To Pennsylvania Charter Schools	88,195.81	166,748.43		254,944.24
568 Tuition To Private Residential Rehabilitative Institutions (PRRI) [In-State] and Detention Centers		6,782.40		6,782.40
580 Travel		(42.00)		(42.00)
<b>Total Other Purchased Services</b>	<b>\$93,172.85</b>	<b>\$173,622.38</b>		<b>\$266,795.23</b>
<b>600 Supplies</b>				
610 General Supplies	2,326.05	2,607.12		4,933.17
640 Books and Periodicals		2,531.52		2,531.52
<b>Total Supplies</b>	<b>\$2,326.05</b>	<b>\$5,138.64</b>		<b>\$7,464.69</b>
<b>700 Property</b>				
752 Capital Equipment – Original and Additional	2,982.48			2,982.48
758 Capitalized Technology Software - Original		257.96		257.96
<b>Total Property</b>	<b>\$2,982.48</b>	<b>\$257.96</b>		<b>\$3,240.44</b>
<b>800 Other Objects</b>				
810 Dues and Fees	568.75	568.75		1,137.50
<b>Total Other Objects</b>	<b>\$568.75</b>	<b>\$568.75</b>		<b>\$1,137.50</b>
<b>Total 1240 Academic Support</b>	<b>\$676,156.60</b>	<b>\$687,870.78</b>	<b>\$298,255.40</b>	<b>\$1,662,282.78</b>

**General Fund (10)**

	<u>Elementary</u>	<u>Secondary</u>	<u>Federal</u>	<u>Total</u>
<b>1241 Learning Support – Public</b>				
<b>100 Personnel Services – Salaries</b>				
100 Personnel Services – Salaries	250,152.73	286,878.37	199,677.00	736,708.10
<b>Total Personnel Services – Salaries</b>	<b>\$250,152.73</b>	<b>\$286,878.37</b>	<b>\$199,677.00</b>	<b>\$736,708.10</b>
<b>200 Personnel Services – Employee Benefits</b>				
210 Group Insurance – Contracted Provider	116,097.86	79,223.60	50,210.94	245,532.40
220 Social Security Contributions	33,671.10	21,267.76		54,938.86
230 PSERS Retirement Contributions	85,260.22	85,795.66	48,367.46	219,423.34
250 Unemployment Compensation	389.20	231.66		620.86
260 Workers' Compensation	2,429.56	1,549.45		3,979.01
<b>Total Personnel Services – Employee Benefits</b>	<b>\$237,847.94</b>	<b>\$188,068.13</b>	<b>\$98,578.40</b>	<b>\$524,494.47</b>
<b>300 Purchased Professional and Technical Services</b>				
322 Professional Educational Services – lus	1,115.00	534.85		1,649.85
329 Professional Educational Services – Other	14,850.00	8,537.60		23,387.60
330 Other Professional Services	49,411.89	738.10		50,149.99
<b>Total Purchased Professional and Technical Services</b>	<b>\$65,376.89</b>	<b>\$9,810.55</b>		<b>\$75,187.44</b>
<b>500 Other Purchased Services</b>				
510 Student Transportation Services	4,613.54			4,613.54
562 Tuition To Pennsylvania Charter Schools	88,195.81	166,748.43		254,944.24
580 Travel		(42.00)		(42.00)
<b>Total Other Purchased Services</b>	<b>\$92,809.35</b>	<b>\$166,706.43</b>		<b>\$259,515.78</b>
<b>600 Supplies</b>				
610 General Supplies	2,326.05	2,238.00		4,564.05
640 Books and Periodicals		2,531.52		2,531.52
<b>Total Supplies</b>	<b>\$2,326.05</b>	<b>\$4,769.52</b>		<b>\$7,095.57</b>
<b>700 Property</b>				
752 Capital Equipment – Original and Additional	2,982.48			2,982.48
758 Capitalized Technology Software - Original		257.96		257.96
<b>Total Property</b>	<b>\$2,982.48</b>	<b>\$257.96</b>		<b>\$3,240.44</b>
<b>800 Other Objects</b>				
810 Dues and Fees	568.75	568.75		1,137.50
<b>Total Other Objects</b>	<b>\$568.75</b>	<b>\$568.75</b>		<b>\$1,137.50</b>
<b>Total 1241 Learning Support – Public</b>	<b>\$652,064.19</b>	<b>\$657,059.71</b>	<b>\$298,255.40</b>	<b>\$1,607,379.30</b>

**General Fund (10)**

	<u>Elementary</u>	<u>Secondary</u>	<u>Federal</u>	<u>Total</u>
<b>1242 Learning Support – PRRI</b>				
<b>300 <u>Purchased Professional and Technical Services</u></b>				
329 Professional Educational Services – Other	200.00			200.00
<b>Total Purchased Professional and Technical Services</b>	<b>\$200.00</b>			<b>\$200.00</b>
<b>500 <u>Other Purchased Services</u></b>				
568 Tuition To Private Residential Rehabilitative Institutions (PRRI) [In-State] and Detention Centers		6,782.40		6,782.40
<b>Total Other Purchased Services</b>		<b>\$6,782.40</b>		<b>\$6,782.40</b>
<b>Total 1242 Learning Support – PRRI</b>	<b>\$200.00</b>	<b>\$6,782.40</b>		<b>\$6,982.40</b>

**General Fund (10)**

	<u>Elementary</u>	<u>Secondary</u>	<u>Federal</u>	<u>Total</u>
<b>1243 Gifted Support</b>				
<b>100 Personnel Services – Salaries</b>				
100 Personnel Services – Salaries	700.00	700.00		1,400.00
<b>Total Personnel Services – Salaries</b>	<b>\$700.00</b>	<b>\$700.00</b>		<b>\$1,400.00</b>
<b>200 Personnel Services – Employee Benefits</b>				
220 Social Security Contributions	53.56	53.56		107.12
230 PSERS Retirement Contributions	210.22	210.22		420.44
260 Workers’ Compensation	3.78	3.78		7.56
<b>Total Personnel Services – Employee Benefits</b>	<b>\$267.56</b>	<b>\$267.56</b>		<b>\$535.12</b>
<b>300 Purchased Professional and Technical Services</b>				
322 Professional Educational Services – Ius	22,561.35	22,558.44		45,119.79
<b>Total Purchased Professional and Technical Services</b>	<b>\$22,561.35</b>	<b>\$22,558.44</b>		<b>\$45,119.79</b>
<b>500 Other Purchased Services</b>				
510 Student Transportation Services	363.50	133.55		497.05
<b>Total Other Purchased Services</b>	<b>\$363.50</b>	<b>\$133.55</b>		<b>\$497.05</b>
<b>600 Supplies</b>				
610 General Supplies		369.12		369.12
<b>Total Supplies</b>		<b>\$369.12</b>		<b>\$369.12</b>
<b>Total 1243 Gifted Support</b>	<b>\$23,892.41</b>	<b>\$24,028.67</b>		<b>\$47,921.08</b>



General Fund (10)

1280 Early Intervention Support

300 Purchased Professional and Technical Services

322 Professional Educational Services – lus

**Total Purchased Professional and Technical Services**

**Total 1280 Early Intervention Support**

	<u>Elementary</u>	<u>Secondary</u>	<u>Federal</u>	<u>Total</u>
	14,629.72			14,629.72
	<b>\$14,629.72</b>			<b>\$14,629.72</b>
	<b>\$14,629.72</b>			<b>\$14,629.72</b>

General Fund (10)

1290 Special Programs - Other Support

Elementary

Secondary

Federal

Total

300 Purchased Professional and Technical Services

322 Professional Educational Services – Ius

149,634.70

149,634.70

329 Professional Educational Services – Other

31,823.55

31,823.55

**Total Purchased Professional and Technical Services**

**\$181,458.25**

**\$181,458.25**

**Total 1290 Special Programs - Other Support**

**\$181,458.25**

**\$181,458.25**

**General Fund (10)**

**1300 Vocational Education**

	<u>Elementary</u>	<u>Secondary</u>	<u>Federal</u>	<u>Total</u>
<b>100 Personnel Services – Salaries</b>				
100 Personnel Services – Salaries		294,391.58		294,391.58
<b>Total Personnel Services – Salaries</b>		<b>\$294,391.58</b>		<b>\$294,391.58</b>
<b>200 Personnel Services – Employee Benefits</b>				
210 Group Insurance – Contracted Provider		70,735.78		70,735.78
220 Social Security Contributions		21,746.02		21,746.02
230 PSERS Retirement Contributions		88,018.25		88,018.25
250 Unemployment Compensation		177.63		177.63
260 Workers' Compensation		1,589.98		1,589.98
<b>Total Personnel Services – Employee Benefits</b>		<b>\$182,267.66</b>		<b>\$182,267.66</b>
<b>400 Purchased Property Services</b>				
430 Repairs and Maintenance Services		1,190.00		1,190.00
<b>Total Purchased Property Services</b>		<b>\$1,190.00</b>		<b>\$1,190.00</b>
<b>500 Other Purchased Services</b>				
510 Student Transportation Services		16,119.43		16,119.43
564 Tuition To Career and Technology Centers		351,378.04		351,378.04
<b>Total Other Purchased Services</b>		<b>\$367,497.47</b>		<b>\$367,497.47</b>
<b>600 Supplies</b>				
610 General Supplies		13,503.75		13,503.75
<b>Total Supplies</b>		<b>\$13,503.75</b>		<b>\$13,503.75</b>
<b>700 Property</b>				
762 Capitalized Equipment - Replacement		2,373.02		2,373.02
<b>Total Property</b>		<b>\$2,373.02</b>		<b>\$2,373.02</b>
<b>Total 1300 Vocational Education</b>		<b>\$861,223.48</b>		<b>\$861,223.48</b>

General Fund (10)

	<u>Elementary</u>	<u>Secondary</u>	<u>Federal</u>	<u>Total</u>
<b>1400 Other Instructional Programs – Elementary / Secondary</b>				
<b>100 Personnel Services – Salaries</b>				
100 Personnel Services – Salaries	2,052.00	132.00		2,184.00
<b>Total Personnel Services – Salaries</b>	<b>\$2,052.00</b>	<b>\$132.00</b>		<b>\$2,184.00</b>
<b>200 Personnel Services – Employee Benefits</b>				
220 Social Security Contributions	156.99	10.09		167.08
230 PSERS Retirement Contributions	616.22	39.64		655.86
260 Workers’ Compensation	11.08	0.71		11.79
<b>Total Personnel Services – Employee Benefits</b>	<b>\$784.29</b>	<b>\$50.44</b>		<b>\$834.73</b>
<b>300 Purchased Professional and Technical Services</b>				
322 Professional Educational Services – Ius		7,717.64		7,717.64
330 Other Professional Services		100.00		100.00
<b>Total Purchased Professional and Technical Services</b>		<b>\$7,817.64</b>		<b>\$7,817.64</b>
<b>500 Other Purchased Services</b>				
568 Tuition To Private Residential Rehabilitative Institutions (PRRI) [In-State] and Detention Centers		8,621.04		8,621.04
580 Travel	1,034.28			1,034.28
<b>Total Other Purchased Services</b>	<b>\$1,034.28</b>	<b>\$8,621.04</b>		<b>\$9,655.32</b>
<b>Total 1400 Other Instructional Programs – Elementary / Secondary</b>	<b>\$3,870.57</b>	<b>\$16,621.12</b>		<b>\$20,491.69</b>

**General Fund (10)**

	<u>Elementary</u>	<u>Secondary</u>	<u>Federal</u>	<u>Total</u>
<b>1430 Homebound Instruction</b>				
<b>100 Personnel Services – Salaries</b>				
100 Personnel Services – Salaries	2,052.00	132.00		2,184.00
<b>Total Personnel Services – Salaries</b>	<b>\$2,052.00</b>	<b>\$132.00</b>		<b>\$2,184.00</b>
<b>200 Personnel Services – Employee Benefits</b>				
220 Social Security Contributions	156.99	10.09		167.08
230 PSERS Retirement Contributions	616.22	39.64		655.86
260 Workers’ Compensation	11.08	0.71		11.79
<b>Total Personnel Services – Employee Benefits</b>	<b>\$784.29</b>	<b>\$50.44</b>		<b>\$834.73</b>
<b>500 Other Purchased Services</b>				
580 Travel	1,034.28			1,034.28
<b>Total Other Purchased Services</b>	<b>\$1,034.28</b>			<b>\$1,034.28</b>
<b>Total 1430 Homebound Instruction</b>	<b>\$3,870.57</b>	<b>\$182.44</b>		<b>\$4,053.01</b>

General Fund (10)

1440 Alternative Regular Education Programs

Elementary

Secondary

Federal

Total

**300 Purchased Professional and Technical Services**

322 Professional Educational Services – Ius

7,717.64

7,717.64

330 Other Professional Services

100.00

100.00

**Total Purchased Professional and Technical Services**

**\$7,817.64**

**\$7,817.64**

**500 Other Purchased Services**

568 Tuition To Private Residential Rehabilitative Institutions (PRRI) [In-State] and Detention Centers

8,621.04

8,621.04

**Total Other Purchased Services**

**\$8,621.04**

**\$8,621.04**

**Total 1440 Alternative Regular Education Programs**

**\$16,438.68**

**\$16,438.68**

General Fund (10)

1442 Alternative Education Programs

300 Purchased Professional and Technical Services

322 Professional Educational Services – Ius

330 Other Professional Services

**Total Purchased Professional and Technical Services**

500 Other Purchased Services

568 Tuition To Private Residential Rehabilitative Institutions (PRRI) [In-State] and Detention Centers

**Total Other Purchased Services**

**Total 1442 Alternative Education Programs**

	<u>Elementary</u>	<u>Secondary</u>	<u>Federal</u>	<u>Total</u>
		7,717.64		7,717.64
		100.00		100.00
		<b>\$7,817.64</b>		<b>\$7,817.64</b>
		8,621.04		8,621.04
		<b>\$8,621.04</b>		<b>\$8,621.04</b>
		<b>\$16,438.68</b>		<b>\$16,438.68</b>

General Fund (10)

1500 Nonpublic School Programs

Elementary

Secondary

Federal

Total

300 Purchased Professional and Technical Services

323 Professional Educational Services – Other Educational Agencies

11,335.92

11,335.92

**Total Purchased Professional and Technical Services**

**\$11,335.92**

**\$11,335.92**

**Total 1500 Nonpublic School Programs**

**\$11,335.92**

**\$11,335.92**



General Fund (10)

2000 Support Services

Total

100 Personnel Services – Salaries

100 Personnel Services – Salaries 2,125,660.00

Total Personnel Services – Salaries \$2,125,660.00

200 Personnel Services – Employee Benefits

210 Group Insurance – Contracted Provider 487,239.91

220 Social Security Contributions 163,447.01

230 PSERS Retirement Contributions 606,751.91

240 Tuition Reimbursement 100,009.09

250 Unemployment Compensation 2,228.01

260 Workers' Compensation 11,493.79

Total Personnel Services – Employee Benefits \$1,371,169.72

300 Purchased Professional and Technical Services

310 Official / Administrative Services 75,695.28

322 Professional Educational Services – lus 5,406.54

324 Professional Educational Services – Employee Training and Development Services 4,046.00

330 Other Professional Services 242,845.25

340 Technical Services 9,946.00

Total Purchased Professional and Technical Services \$337,939.07

400 Purchased Property Services

410 Cleaning Services 51,558.30

420 Utility Services 206,380.51

430 Repairs and Maintenance Services 41,199.42

440 Rentals 8,559.84

Total Purchased Property Services \$307,698.07

500 Other Purchased Services

510 Student Transportation Services 299.60

513 Contracted Carriers 1,397,561.31

516 Student Transportation Services From the IU 5,512.00

520 Insurance – General 86,096.00

530 Communications 28,843.41

549 Other Advertising/Public Relations 4,128.26

580 Travel 24,087.66

591 Services Purchased Locally 13.00

594 IU Payment By Withholding for Institutionalized Children's Programs – Special Classes 16,458.10

599 Other Miscellaneous Purchased Services 220.00

Total Other Purchased Services \$1,563,219.34

600 Supplies

610 General Supplies 176,999.96

620 Energy 81,457.62

640 Books and Periodicals 76,695.48

650 Supplies & Fees – Technology Related (6,005.70)

Total Supplies \$329,147.36

**General Fund (10)**

**2000 Support Services**

**Total**

**700 Property**

752 Capital Equipment – Original and Additional	17,362.17
756 Capitalized Technology Hardware and Equipment – Original	30,161.53
758 Capitalized Technology Software - Original	49,704.06
762 Capitalized Equipment - Replacement	27,371.57
768 Capitalized Technology Software - Replacement	2,418.46

<b>Total Property</b>	<b>\$127,017.79</b>
-----------------------	---------------------

**800 Other Objects**

810 Dues and Fees	22,602.76
860 Grants To Municipal and Community Service Organizations	11,664.00

<b>Total Other Objects</b>	<b>\$34,266.76</b>
----------------------------	--------------------

<b>Total 2000 Support Services</b>	<b>\$6,196,118.11</b>
------------------------------------	-----------------------

**General Fund (10)**

	<u>Elementary</u>	<u>Secondary</u>	<u>Federal</u>	<u>Total</u>
<b>2100 Support Services – Students</b>				
<b>100 Personnel Services – Salaries</b>				
100 Personnel Services – Salaries	159,561.90	296,342.40		455,904.30
<b>Total Personnel Services – Salaries</b>	<b>\$159,561.90</b>	<b>\$296,342.40</b>		<b>\$455,904.30</b>
<b>200 Personnel Services – Employee Benefits</b>				
210 Group Insurance – Contracted Provider	37,417.42	38,033.69		75,451.11
220 Social Security Contributions	11,860.81	22,436.03		34,296.84
230 PSERS Retirement Contributions	41,992.04	84,472.44		126,464.48
250 Unemployment Compensation	181.61	265.47		447.08
260 Workers' Compensation	861.71	1,600.30		2,462.01
<b>Total Personnel Services – Employee Benefits</b>	<b>\$92,313.59</b>	<b>\$146,807.93</b>		<b>\$239,121.52</b>
<b>300 Purchased Professional and Technical Services</b>				
330 Other Professional Services	73,533.08	73,533.06		147,066.14
<b>Total Purchased Professional and Technical Services</b>	<b>\$73,533.08</b>	<b>\$73,533.06</b>		<b>\$147,066.14</b>
<b>500 Other Purchased Services</b>				
510 Student Transportation Services		299.60		299.60
530 Communications	550.00	550.00		1,100.00
580 Travel	3,385.80	3,700.29		7,086.09
<b>Total Other Purchased Services</b>	<b>\$3,935.80</b>	<b>\$4,549.89</b>		<b>\$8,485.69</b>
<b>600 Supplies</b>				
610 General Supplies	3,644.48	4,360.48		8,004.96
640 Books and Periodicals	154.00	3,145.00		8,649.00
<b>Total Supplies</b>	<b>\$3,798.48</b>	<b>\$7,505.48</b>		<b>\$16,653.96</b>
<b>700 Property</b>				
758 Capitalized Technology Software - Original	500.00	500.00		1,000.00
762 Capitalized Equipment - Replacement	150.00	150.00		300.00
<b>Total Property</b>	<b>\$650.00</b>	<b>\$650.00</b>		<b>\$1,300.00</b>
<b>800 Other Objects</b>				
810 Dues and Fees	225.00	225.00		450.00
<b>Total Other Objects</b>	<b>\$225.00</b>	<b>\$225.00</b>		<b>\$450.00</b>
<b>Total 2100 Support Services – Students</b>	<b>\$334,017.85</b>	<b>\$529,613.76</b>		<b>\$868,981.61</b>

**General Fund (10)**

**2120 Guidance Services**

**100 Personnel Services – Salaries**

	<u>Elementary</u>	<u>Secondary</u>	<u>Federal</u>	<u>Total</u>
100 Personnel Services – Salaries	84,847.62	221,628.13		306,475.75
<b>Total Personnel Services – Salaries</b>	<b>\$84,847.62</b>	<b>\$221,628.13</b>		<b>\$306,475.75</b>

**200 Personnel Services – Employee Benefits**

210 Group Insurance – Contracted Provider	17,162.04	17,778.33		34,940.37
220 Social Security Contributions	6,326.56	16,901.79		23,228.35
230 PSERS Retirement Contributions	25,478.78	67,959.18		93,437.96
250 Unemployment Compensation	41.92	125.78		167.70
260 Workers' Compensation	458.16	1,196.75		1,654.91
<b>Total Personnel Services – Employee Benefits</b>	<b>\$49,467.46</b>	<b>\$103,961.83</b>		<b>\$153,429.29</b>

**500 Other Purchased Services**

510 Student Transportation Services		299.60		299.60
580 Travel	319.44	633.93		953.37
<b>Total Other Purchased Services</b>	<b>\$319.44</b>	<b>\$933.53</b>		<b>\$1,252.97</b>

**600 Supplies**

610 General Supplies		716.02		716.02
640 Books and Periodicals		2,991.00		2,991.00
<b>Total Supplies</b>		<b>\$3,707.02</b>		<b>\$3,707.02</b>
<b>Total 2120 Guidance Services</b>	<b>\$134,634.52</b>	<b>\$330,230.51</b>		<b>\$464,865.03</b>

**General Fund (10)**

**2140 Psychological Services**

	<u>Elementary</u>	<u>Secondary</u>	<u>Federal</u>	<u>Total</u>
<b>100 Personnel Services – Salaries</b>				
100 Personnel Services – Salaries	74,714.28	74,714.27		149,428.55
<b>Total Personnel Services – Salaries</b>	<b>\$74,714.28</b>	<b>\$74,714.27</b>		<b>\$149,428.55</b>
<b>200 Personnel Services – Employee Benefits</b>				
210 Group Insurance – Contracted Provider	20,255.38	20,255.36		40,510.74
220 Social Security Contributions	5,534.25	5,534.24		11,068.49
230 PSERS Retirement Contributions	16,513.26	16,513.26		33,026.52
250 Unemployment Compensation	139.69	139.69		279.38
260 Workers' Compensation	403.55	403.55		807.10
<b>Total Personnel Services – Employee Benefits</b>	<b>\$42,846.13</b>	<b>\$42,846.10</b>		<b>\$85,692.23</b>
<b>300 Purchased Professional and Technical Services</b>				
330 Other Professional Services	73,533.08	73,533.06		147,066.14
<b>Total Purchased Professional and Technical Services</b>	<b>\$73,533.08</b>	<b>\$73,533.06</b>		<b>\$147,066.14</b>
<b>500 Other Purchased Services</b>				
530 Communications	550.00	550.00		1,100.00
580 Travel	3,066.36	3,066.36		6,132.72
<b>Total Other Purchased Services</b>	<b>\$3,616.36</b>	<b>\$3,616.36</b>		<b>\$7,232.72</b>
<b>600 Supplies</b>				
610 General Supplies	3,644.48	3,644.46		7,288.94
640 Books and Periodicals	154.00	154.00		308.00
<b>Total Supplies</b>	<b>\$3,798.48</b>	<b>\$3,798.46</b>		<b>\$7,596.94</b>
<b>700 Property</b>				
758 Capitalized Technology Software - Original	500.00	500.00		1,000.00
762 Capitalized Equipment - Replacement	150.00	150.00		300.00
<b>Total Property</b>	<b>\$650.00</b>	<b>\$650.00</b>		<b>\$1,300.00</b>
<b>800 Other Objects</b>				
810 Dues and Fees	225.00	225.00		450.00
<b>Total Other Objects</b>	<b>\$225.00</b>	<b>\$225.00</b>		<b>\$450.00</b>
<b>Total 2140 Psychological Services</b>	<b>\$199,383.33</b>	<b>\$199,383.25</b>		<b>\$398,766.58</b>

General Fund (10)

2170 Student Accounting Services

Elementary

Secondary

Federal

Total

600 Supplies

640 Books and Periodicals

5,350.00

**Total Supplies**

**\$5,350.00**

**Total 2170 Student Accounting Services**

**\$5,350.00**

**General Fund (10)**

	<u>Elementary</u>	<u>Secondary</u>	<u>Federal</u>	<u>Total</u>
<b>2200 Support Services – Instructional Staff</b>				
<b>100 Personnel Services – Salaries</b>				
100 Personnel Services – Salaries	119,678.79	92,350.32		212,029.11
<b>Total Personnel Services – Salaries</b>	<b>\$119,678.79</b>	<b>\$92,350.32</b>		<b>\$212,029.11</b>
<b>200 Personnel Services – Employee Benefits</b>				
210 Group Insurance – Contracted Provider	27,078.13	26,675.62		53,753.75
220 Social Security Contributions	8,883.86	6,813.47		15,697.33
230 PSERS Retirement Contributions	35,643.04	27,595.99		63,239.03
240 Tuition Reimbursement	44,377.14	55,354.40	277.55	100,009.09
250 Unemployment Compensation	114.26	97.32		211.58
260 Workers' Compensation	646.32	498.99		1,145.31
<b>Total Personnel Services – Employee Benefits</b>	<b>\$116,742.75</b>	<b>\$117,035.79</b>	<b>\$277.55</b>	<b>\$234,056.09</b>
<b>300 Purchased Professional and Technical Services</b>				
322 Professional Educational Services – Ius	1,430.54	976.00		2,406.54
324 Professional Educational Services – Employee Training and Development Services		4,046.00		4,046.00
330 Other Professional Services	1,050.00	1,050.00		2,100.00
340 Technical Services	4,973.00	4,973.00		9,946.00
<b>Total Purchased Professional and Technical Services</b>	<b>\$7,453.54</b>	<b>\$11,045.00</b>		<b>\$18,498.54</b>
<b>400 Purchased Property Services</b>				
430 Repairs and Maintenance Services	6,144.35	6,144.35		12,288.70
440 Rentals	3,503.14	3,503.14		7,006.28
<b>Total Purchased Property Services</b>	<b>\$9,647.49</b>	<b>\$9,647.49</b>		<b>\$19,294.98</b>
<b>500 Other Purchased Services</b>				
530 Communications	125.00	125.00		250.00
580 Travel	832.74	1,109.77		1,942.51
<b>Total Other Purchased Services</b>	<b>\$957.74</b>	<b>\$1,234.77</b>		<b>\$2,192.51</b>
<b>600 Supplies</b>				
610 General Supplies	11,953.07	8,880.89		20,833.96
640 Books and Periodicals	34,490.95	33,555.53		68,046.48
650 Supplies & Fees – Technology Related	(3,002.85)	(3,002.85)		(6,005.70)
<b>Total Supplies</b>	<b>\$43,441.17</b>	<b>\$39,433.57</b>		<b>\$82,874.74</b>
<b>700 Property</b>				
756 Capitalized Technology Hardware and Equipment – Original		30,161.53		30,161.53
758 Capitalized Technology Software - Original	23,047.32	23,047.31		46,094.63
768 Capitalized Technology Software - Replacement	1,209.23	1,209.23		2,418.46
<b>Total Property</b>	<b>\$24,256.55</b>	<b>\$54,418.07</b>		<b>\$78,674.62</b>
<b>Total 2200 Support Services – Instructional Staff</b>	<b>\$322,178.03</b>	<b>\$325,165.01</b>	<b>\$277.55</b>	<b>\$647,620.59</b>

**General Fund (10)**

**2240 Computer-Assisted Instruction Support Services**

	<u>Elementary</u>	<u>Secondary</u>	<u>Federal</u>	<u>Total</u>
<b>100 Personnel Services – Salaries</b>				
100 Personnel Services – Salaries	40,506.30	40,507.29		81,013.59
<b>Total Personnel Services – Salaries</b>	<b>\$40,506.30</b>	<b>\$40,507.29</b>		<b>\$81,013.59</b>
<b>200 Personnel Services – Employee Benefits</b>				
210 Group Insurance – Contracted Provider	9,067.89	9,067.88		18,135.77
220 Social Security Contributions	3,013.38	3,013.37		6,026.75
230 PSERS Retirement Contributions	12,074.79	12,074.79		24,149.58
250 Unemployment Compensation	20.96	20.96		41.92
260 Workers' Compensation	218.73	218.73		437.46
<b>Total Personnel Services – Employee Benefits</b>	<b>\$24,395.75</b>	<b>\$24,395.73</b>		<b>\$48,791.48</b>
<b>300 Purchased Professional and Technical Services</b>				
340 Technical Services	4,973.00	4,973.00		9,946.00
<b>Total Purchased Professional and Technical Services</b>	<b>\$4,973.00</b>	<b>\$4,973.00</b>		<b>\$9,946.00</b>
<b>400 Purchased Property Services</b>				
430 Repairs and Maintenance Services	6,144.35	6,144.35		12,288.70
440 Rentals	3,503.14	3,503.14		7,006.28
<b>Total Purchased Property Services</b>	<b>\$9,647.49</b>	<b>\$9,647.49</b>		<b>\$19,294.98</b>
<b>500 Other Purchased Services</b>				
580 Travel	44.28	44.28		88.56
<b>Total Other Purchased Services</b>	<b>\$44.28</b>	<b>\$44.28</b>		<b>\$88.56</b>
<b>600 Supplies</b>				
610 General Supplies	9,897.89	7,170.89		17,068.78
640 Books and Periodicals	33,555.53	33,555.53		67,111.06
650 Supplies & Fees – Technology Related	(3,002.85)	(3,002.85)		(6,005.70)
<b>Total Supplies</b>	<b>\$40,450.57</b>	<b>\$37,723.57</b>		<b>\$78,174.14</b>
<b>700 Property</b>				
756 Capitalized Technology Hardware and Equipment – Original		30,161.53		30,161.53
758 Capitalized Technology Software - Original	23,047.32	23,047.31		46,094.63
768 Capitalized Technology Software - Replacement	1,209.23	1,209.23		2,418.46
<b>Total Property</b>	<b>\$24,256.55</b>	<b>\$54,418.07</b>		<b>\$78,674.62</b>
<b>Total 2240 Computer-Assisted Instruction Support Services</b>	<b>\$144,273.94</b>	<b>\$171,709.43</b>		<b>\$315,983.37</b>



General Fund (10)

2250 School Library Services

100 Personnel Services – Salaries

	<u>Elementary</u>	<u>Secondary</u>	<u>Federal</u>	<u>Total</u>
100 Personnel Services – Salaries	42,563.20	15,186.75		57,749.95
<b>Total Personnel Services – Salaries</b>	<b>\$42,563.20</b>	<b>\$15,186.75</b>		<b>\$57,749.95</b>

200 Personnel Services – Employee Benefits

210 Group Insurance – Contracted Provider	7,084.18	6,681.69		13,765.87
220 Social Security Contributions	3,211.96	1,138.08		4,350.04
230 PSERS Retirement Contributions	12,643.54	4,513.61		17,157.15
250 Unemployment Compensation	56.59	39.46		96.05
260 Workers' Compensation	229.88	82.30		312.18
<b>Total Personnel Services – Employee Benefits</b>	<b>\$23,226.15</b>	<b>\$12,455.14</b>		<b>\$35,681.29</b>

600 Supplies

610 General Supplies	2,040.18	1,695.00		3,735.18
640 Books and Periodicals	935.42			935.42
<b>Total Supplies</b>	<b>\$2,975.60</b>	<b>\$1,695.00</b>		<b>\$4,670.60</b>
<b>Total 2250 School Library Services</b>	<b>\$68,764.95</b>	<b>\$29,336.89</b>		<b>\$98,101.84</b>

**General Fund (10)**

	<u>Elementary</u>	<u>Secondary</u>	<u>Federal</u>	<u>Total</u>
<b>2260 Instruction and Curriculum Development Services</b>				
<b>100 Personnel Services – Salaries</b>				
100 Personnel Services – Salaries	36,195.29	36,196.28		72,391.57
<b>Total Personnel Services – Salaries</b>	<b>\$36,195.29</b>	<b>\$36,196.28</b>		<b>\$72,391.57</b>
<b>200 Personnel Services – Employee Benefits</b>				
210 Group Insurance – Contracted Provider	10,926.06	10,926.05		21,852.11
220 Social Security Contributions	2,626.88	2,626.87		5,253.75
230 PSERS Retirement Contributions	10,869.45	10,869.44		21,738.89
250 Unemployment Compensation	34.91	34.90		69.81
260 Workers' Compensation	195.46	195.46		390.92
<b>Total Personnel Services – Employee Benefits</b>	<b>\$24,652.76</b>	<b>\$24,652.72</b>		<b>\$49,305.48</b>
<b>300 Purchased Professional and Technical Services</b>				
324 Professional Educational Services – Employee Training and Development Services		4,046.00		4,046.00
<b>Total Purchased Professional and Technical Services</b>		<b>\$4,046.00</b>		<b>\$4,046.00</b>
<b>500 Other Purchased Services</b>				
530 Communications	125.00	125.00		250.00
580 Travel	743.46	743.45		1,486.91
<b>Total Other Purchased Services</b>	<b>\$868.46</b>	<b>\$868.45</b>		<b>\$1,736.91</b>
<b>Total 2260 Instruction and Curriculum Development Services</b>	<b>\$61,716.51</b>	<b>\$65,763.45</b>		<b>\$127,479.96</b>

**General Fund (10)**

	<u>Elementary</u>	<u>Secondary</u>	<u>Federal</u>	<u>Total</u>
<b>2270 Instructional Staff Professional Development Services</b>				
<b>100 Personnel Services – Salaries</b>				
100 Personnel Services – Salaries	414.00	460.00		874.00
<b>Total Personnel Services – Salaries</b>	<b>\$414.00</b>	<b>\$460.00</b>		<b>\$874.00</b>
<b>200 Personnel Services – Employee Benefits</b>				
220 Social Security Contributions	31.64	35.15		66.79
230 PSERS Retirement Contributions	55.26	138.15		193.41
240 Tuition Reimbursement	44,377.14	55,354.40	277.55	100,009.09
250 Unemployment Compensation	1.80	2.00		3.80
260 Workers' Compensation	2.25	2.50		4.75
<b>Total Personnel Services – Employee Benefits</b>	<b>\$44,468.09</b>	<b>\$55,532.20</b>	<b>\$277.55</b>	<b>\$100,277.84</b>
<b>300 Purchased Professional and Technical Services</b>				
322 Professional Educational Services – lus	1,430.54	976.00		2,406.54
330 Other Professional Services	1,050.00	1,050.00		2,100.00
<b>Total Purchased Professional and Technical Services</b>	<b>\$2,480.54</b>	<b>\$2,026.00</b>		<b>\$4,506.54</b>
<b>500 Other Purchased Services</b>				
580 Travel	45.00	322.04		367.04
<b>Total Other Purchased Services</b>	<b>\$45.00</b>	<b>\$322.04</b>		<b>\$367.04</b>
<b>600 Supplies</b>				
610 General Supplies	15.00	15.00		30.00
<b>Total Supplies</b>	<b>\$15.00</b>	<b>\$15.00</b>		<b>\$30.00</b>
<b>Total 2270 Instructional Staff Professional Development Services</b>	<b>\$47,422.63</b>	<b>\$58,355.24</b>	<b>\$277.55</b>	<b>\$106,055.42</b>

**General Fund (10)**

	<u>Elementary</u>	<u>Secondary</u>	<u>Federal</u>	<u>Total</u>
<b>2300 Support Services – Administration</b>				
<b>100 Personnel Services – Salaries</b>				
100 Personnel Services – Salaries	162,872.11	257,713.46		574,900.08
<b>Total Personnel Services – Salaries</b>	<b>\$162,872.11</b>	<b>\$257,713.46</b>		<b>\$574,900.08</b>
<b>200 Personnel Services – Employee Benefits</b>				
210 Group Insurance – Contracted Provider	31,641.20	49,914.26		110,789.82
220 Social Security Contributions	12,110.24	19,395.62		47,109.82
230 PSERS Retirement Contributions	45,685.79	75,285.03		166,725.44
250 Unemployment Compensation	199.28	214.27		538.25
260 Workers' Compensation	879.39	1,391.94		3,104.49
<b>Total Personnel Services – Employee Benefits</b>	<b>\$90,515.90</b>	<b>\$146,201.12</b>		<b>\$328,267.82</b>
<b>300 Purchased Professional and Technical Services</b>				
310 Official / Administrative Services				75,695.28
322 Professional Educational Services – Ius				3,000.00
330 Other Professional Services				45,768.24
<b>Total Purchased Professional and Technical Services</b>				<b>\$124,463.52</b>
<b>400 Purchased Property Services</b>				
430 Repairs and Maintenance Services				2,214.98
<b>Total Purchased Property Services</b>				<b>\$2,214.98</b>
<b>500 Other Purchased Services</b>				
520 Insurance – General				350.00
530 Communications	4,714.45	10,035.71		14,750.16
580 Travel	1,782.26	2,283.57		12,957.59
591 Services Purchased Locally				13.00
<b>Total Other Purchased Services</b>	<b>\$6,496.71</b>	<b>\$12,319.28</b>		<b>\$28,070.75</b>
<b>600 Supplies</b>				
610 General Supplies				19,960.44
<b>Total Supplies</b>				<b>\$19,960.44</b>
<b>700 Property</b>				
758 Capitalized Technology Software - Original				2,609.43
762 Capitalized Equipment - Replacement				2,002.90
<b>Total Property</b>				<b>\$4,612.33</b>
<b>800 Other Objects</b>				
810 Dues and Fees		729.00		12,301.47
860 Grants To Municipal and Community Service Organizations				11,664.00
<b>Total Other Objects</b>		<b>\$729.00</b>		<b>\$23,965.47</b>
<b>Total 2300 Support Services – Administration</b>	<b>\$259,884.72</b>	<b>\$416,962.86</b>		<b>\$1,106,455.39</b>

General Fund (10)

2310 Board Services

Elementary

Secondary

Federal

Total

**100 Personnel Services – Salaries**

100 Personnel Services – Salaries

2,600.00

**Total Personnel Services – Salaries**

**\$2,600.00**

**200 Personnel Services – Employee Benefits**

220 Social Security Contributions

198.00

230 PSERS Retirement Contributions

780.78

260 Workers’ Compensation

14.04

**Total Personnel Services – Employee Benefits**

**\$992.82**

**500 Other Purchased Services**

520 Insurance – General

350.00

580 Travel

1,763.51

591 Services Purchased Locally

13.00

**Total Other Purchased Services**

**\$2,126.51**

**600 Supplies**

610 General Supplies

676.30

**Total Supplies**

**\$676.30**

**800 Other Objects**

810 Dues and Fees

9,464.47

**Total Other Objects**

**\$9,464.47**

**Total 2310 Board Services**

**\$15,860.10**

General Fund (10)

	<u>Elementary</u>	<u>Secondary</u>	<u>Federal</u>	<u>Total</u>
<b>2330 Tax Assessment and Collection Services</b>				
<b>200 Personnel Services – Employee Benefits</b>				
220 Social Security Contributions				4,115.87
<b>Total Personnel Services – Employee Benefits</b>				<b>\$4,115.87</b>
<b>300 Purchased Professional and Technical Services</b>				
310 Official / Administrative Services				75,695.28
330 Other Professional Services				394.17
<b>Total Purchased Professional and Technical Services</b>				<b>\$76,089.45</b>
<b>600 Supplies</b>				
610 General Supplies				11,283.10
<b>Total Supplies</b>				<b>\$11,283.10</b>
<b>Total 2330 Tax Assessment and Collection Services</b>				<b>\$91,488.42</b>

General Fund (10)

2340 Staff Relations and Negotiations Services

Elementary

Secondary

Federal

Total

300 Purchased Professional and Technical Services

330 Other Professional Services

7,139.58

**Total Purchased Professional and Technical Services**

**\$7,139.58**

**Total 2340 Staff Relations and Negotiations Services**

**\$7,139.58**

General Fund (10)

2350 Legal and Accounting Services

Elementary

Secondary

Federal

Total

300 Purchased Professional and Technical Services

330 Other Professional Services

35,170.49

**Total Purchased Professional and Technical Services**

**\$35,170.49**

**Total 2350 Legal and Accounting Services**

**\$35,170.49**



**General Fund (10)**

	<u>Elementary</u>	<u>Secondary</u>	<u>Federal</u>	<u>Total</u>
<b>2360 Office of the Superintendent / Executive Director Services</b>				
<b>100 Personnel Services – Salaries</b>				
100 Personnel Services – Salaries				151,714.51
<b>Total Personnel Services – Salaries</b>				<b>\$151,714.51</b>
<b>200 Personnel Services – Employee Benefits</b>				
210 Group Insurance – Contracted Provider				29,234.36
220 Social Security Contributions				11,290.09
230 PSERS Retirement Contributions				44,973.84
250 Unemployment Compensation				124.70
260 Workers' Compensation				819.12
<b>Total Personnel Services – Employee Benefits</b>				<b>\$86,442.11</b>
<b>300 Purchased Professional and Technical Services</b>				
322 Professional Educational Services – lus				3,000.00
330 Other Professional Services				3,064.00
<b>Total Purchased Professional and Technical Services</b>				<b>\$6,064.00</b>
<b>400 Purchased Property Services</b>				
430 Repairs and Maintenance Services				2,214.98
<b>Total Purchased Property Services</b>				<b>\$2,214.98</b>
<b>500 Other Purchased Services</b>				
530 Communications	299.81	299.80		599.61
580 Travel				7,128.25
<b>Total Other Purchased Services</b>	<b>\$299.81</b>	<b>\$299.80</b>		<b>\$7,727.86</b>
<b>600 Supplies</b>				
610 General Supplies				8,001.04
<b>Total Supplies</b>				<b>\$8,001.04</b>
<b>700 Property</b>				
758 Capitalized Technology Software - Original				2,609.43
762 Capitalized Equipment - Replacement				2,002.90
<b>Total Property</b>				<b>\$4,612.33</b>
<b>800 Other Objects</b>				
810 Dues and Fees				2,108.00
<b>Total Other Objects</b>				<b>\$2,108.00</b>
<b>Total 2360 Office of the Superintendent / Executive Director Services</b>	<b>\$299.81</b>	<b>\$299.80</b>		<b>\$268,884.83</b>

General Fund (10)

2370 Community Relations Services

Elementary

Secondary

Federal

Total

800 Other Objects

860 Grants To Municipal and Community Service Organizations

11,664.00

**Total Other Objects**

**\$11,664.00**

**Total 2370 Community Relations Services**

**\$11,664.00**

**General Fund (10)**

	<u>Elementary</u>	<u>Secondary</u>	<u>Federal</u>	<u>Total</u>
<b>2380 Office of the Principal Services</b>				
<b>100 Personnel Services – Salaries</b>				
100 Personnel Services – Salaries	162,872.11	257,713.46		420,585.57
<b>Total Personnel Services – Salaries</b>	<b>\$162,872.11</b>	<b>\$257,713.46</b>		<b>\$420,585.57</b>
<b>200 Personnel Services – Employee Benefits</b>				
210 Group Insurance – Contracted Provider	31,641.20	49,914.26		81,555.46
220 Social Security Contributions	12,110.24	19,395.62		31,505.86
230 PSERS Retirement Contributions	45,685.79	75,285.03		120,970.82
250 Unemployment Compensation	199.28	214.27		413.55
260 Workers' Compensation	879.39	1,391.94		2,271.33
<b>Total Personnel Services – Employee Benefits</b>	<b>\$90,515.90</b>	<b>\$146,201.12</b>		<b>\$236,717.02</b>
<b>500 Other Purchased Services</b>				
530 Communications	4,414.64	9,735.91		14,150.55
580 Travel	1,782.26	2,283.57		4,065.83
<b>Total Other Purchased Services</b>	<b>\$6,196.90</b>	<b>\$12,019.48</b>		<b>\$18,216.38</b>
<b>800 Other Objects</b>				
810 Dues and Fees		729.00		729.00
<b>Total Other Objects</b>		<b>\$729.00</b>		<b>\$729.00</b>
<b>Total 2380 Office of the Principal Services</b>	<b>\$259,584.91</b>	<b>\$416,663.06</b>		<b>\$676,247.97</b>

General Fund (10)

	<u>Elementary</u>	<u>Secondary</u>	<u>Federal</u>	<u>Total</u>
<b>2400 Support Services – Pupil Health</b>				
<b>100 Personnel Services – Salaries</b>				
100 Personnel Services – Salaries				124,050.80
<b>Total Personnel Services – Salaries</b>				<b>\$124,050.80</b>
<b>200 Personnel Services – Employee Benefits</b>				
210 Group Insurance – Contracted Provider				16,986.52
220 Social Security Contributions				9,540.30
230 PSERS Retirement Contributions				34,204.05
250 Unemployment Compensation				122.83
260 Workers' Compensation				685.02
<b>Total Personnel Services – Employee Benefits</b>				<b>\$61,538.72</b>
<b>300 Purchased Professional and Technical Services</b>				
330 Other Professional Services				795.00
<b>Total Purchased Professional and Technical Services</b>				<b>\$795.00</b>
<b>400 Purchased Property Services</b>				
430 Repairs and Maintenance Services				613.34
<b>Total Purchased Property Services</b>				<b>\$613.34</b>
<b>600 Supplies</b>				
610 General Supplies				2,579.52
<b>Total Supplies</b>				<b>\$2,579.52</b>
<b>700 Property</b>				
752 Capital Equipment – Original and Additional				108.09
762 Capitalized Equipment - Replacement				7,930.43
<b>Total Property</b>				<b>\$8,038.52</b>
<b>Total 2400 Support Services – Pupil Health</b>				<b>\$197,615.90</b>

**General Fund (10)**

**2420 Medical Services**

	<u>Elementary</u>	<u>Secondary</u>	<u>Federal</u>	<u>Total</u>
<b>100 Personnel Services – Salaries</b>				
100 Personnel Services – Salaries				124,050.80
<b>Total Personnel Services – Salaries</b>				<b>\$124,050.80</b>
<b>200 Personnel Services – Employee Benefits</b>				
210 Group Insurance – Contracted Provider				16,986.52
220 Social Security Contributions				9,540.30
230 PSERS Retirement Contributions				34,204.05
250 Unemployment Compensation				122.83
260 Workers' Compensation				685.02
<b>Total Personnel Services – Employee Benefits</b>				<b>\$61,538.72</b>
<b>300 Purchased Professional and Technical Services</b>				
330 Other Professional Services				795.00
<b>Total Purchased Professional and Technical Services</b>				<b>\$795.00</b>
<b>400 Purchased Property Services</b>				
430 Repairs and Maintenance Services				613.34
<b>Total Purchased Property Services</b>				<b>\$613.34</b>
<b>600 Supplies</b>				
610 General Supplies				2,579.52
<b>Total Supplies</b>				<b>\$2,579.52</b>
<b>700 Property</b>				
752 Capital Equipment – Original and Additional				108.09
762 Capitalized Equipment - Replacement				7,930.43
<b>Total Property</b>				<b>\$8,038.52</b>
<b>Total 2420 Medical Services</b>				<b>\$197,615.90</b>

**General Fund (10)**

	<u>Elementary</u>	<u>Secondary</u>	<u>Federal</u>	<u>Total</u>
<b>2500 Support Services – Business</b>				
<b>100 Personnel Services – Salaries</b>				
100 Personnel Services – Salaries				233,861.64
<b>Total Personnel Services – Salaries</b>				<b>\$233,861.64</b>
<b>200 Personnel Services – Employee Benefits</b>				
210 Group Insurance – Contracted Provider				68,841.24
220 Social Security Contributions				17,354.07
230 PSERS Retirement Contributions				67,655.75
250 Unemployment Compensation				224.42
260 Workers' Compensation				1,262.96
<b>Total Personnel Services – Employee Benefits</b>				<b>\$155,338.44</b>
<b>300 Purchased Professional and Technical Services</b>				
330 Other Professional Services				33,636.32
<b>Total Purchased Professional and Technical Services</b>				<b>\$33,636.32</b>
<b>400 Purchased Property Services</b>				
430 Repairs and Maintenance Services				3,319.73
<b>Total Purchased Property Services</b>				<b>\$3,319.73</b>
<b>500 Other Purchased Services</b>				
520 Insurance – General				85,746.00
530 Communications				11,237.08
549 Other Advertising/Public Relations				4,128.26
580 Travel				1,918.61
594 IU Payment By Withholding for Institutionalized Children's Programs – Special Classes				16,458.10
599 Other Miscellaneous Purchased Services				220.00
<b>Total Other Purchased Services</b>				<b>\$119,708.05</b>
<b>600 Supplies</b>				
610 General Supplies				5,077.91
<b>Total Supplies</b>				<b>\$5,077.91</b>
<b>700 Property</b>				
762 Capitalized Equipment - Replacement				579.00
<b>Total Property</b>				<b>\$579.00</b>
<b>800 Other Objects</b>				
810 Dues and Fees				8,094.29
<b>Total Other Objects</b>				<b>\$8,094.29</b>
<b>Total 2500 Support Services – Business</b>				<b>\$559,615.38</b>

**General Fund (10)**

**2510 Fiscal Services**

Elementary                      Secondary                      Federal                      Total

<b>100</b>	<b><u>Personnel Services – Salaries</u></b>				
	100 Personnel Services – Salaries				233,861.64
<b>Total Personnel Services – Salaries</b>					<b>\$233,861.64</b>
<b>200</b>	<b><u>Personnel Services – Employee Benefits</u></b>				
	210 Group Insurance – Contracted Provider				68,841.24
	220 Social Security Contributions				17,354.07
	230 PSERS Retirement Contributions				67,655.75
	250 Unemployment Compensation				224.42
	260 Workers' Compensation				1,262.96
<b>Total Personnel Services – Employee Benefits</b>					<b>\$155,338.44</b>
<b>300</b>	<b><u>Purchased Professional and Technical Services</u></b>				
	330 Other Professional Services				33,636.32
<b>Total Purchased Professional and Technical Services</b>					<b>\$33,636.32</b>
<b>400</b>	<b><u>Purchased Property Services</u></b>				
	430 Repairs and Maintenance Services				3,319.73
<b>Total Purchased Property Services</b>					<b>\$3,319.73</b>
<b>500</b>	<b><u>Other Purchased Services</u></b>				
	520 Insurance – General				85,746.00
	530 Communications				11,237.08
	549 Other Advertising/Public Relations				4,128.26
	580 Travel				1,918.61
	594 IU Payment By Withholding for Institutionalized Children's Programs – Special Classes				16,458.10
	599 Other Miscellaneous Purchased Services				220.00
<b>Total Other Purchased Services</b>					<b>\$119,708.05</b>
<b>600</b>	<b><u>Supplies</u></b>				
	610 General Supplies				5,077.91
<b>Total Supplies</b>					<b>\$5,077.91</b>
<b>700</b>	<b><u>Property</u></b>				
	762 Capitalized Equipment - Replacement				579.00
<b>Total Property</b>					<b>\$579.00</b>
<b>800</b>	<b><u>Other Objects</u></b>				
	810 Dues and Fees				8,094.29
<b>Total Other Objects</b>					<b>\$8,094.29</b>
<b>Total 2510 Fiscal Services</b>					<b>\$559,615.38</b>

**General Fund (10)**

	<u>Elementary</u>	<u>Secondary</u>	<u>Federal</u>	<u>Total</u>
<b>2511 Supervision of Fiscal Services - Head of Component</b>				
<b>100 Personnel Services – Salaries</b>				
100 Personnel Services – Salaries				233,861.64
<b>Total Personnel Services – Salaries</b>				<b>\$233,861.64</b>
<b>200 Personnel Services – Employee Benefits</b>				
210 Group Insurance – Contracted Provider				68,841.24
220 Social Security Contributions				17,354.07
230 PSERS Retirement Contributions				67,655.75
250 Unemployment Compensation				224.42
260 Workers' Compensation				1,262.96
<b>Total Personnel Services – Employee Benefits</b>				<b>\$155,338.44</b>
<b>300 Purchased Professional and Technical Services</b>				
330 Other Professional Services				33,636.32
<b>Total Purchased Professional and Technical Services</b>				<b>\$33,636.32</b>
<b>400 Purchased Property Services</b>				
430 Repairs and Maintenance Services				3,319.73
<b>Total Purchased Property Services</b>				<b>\$3,319.73</b>
<b>500 Other Purchased Services</b>				
520 Insurance – General				85,746.00
530 Communications				11,237.08
549 Other Advertising/Public Relations				4,128.26
580 Travel				1,918.61
594 IU Payment By Withholding for Institutionalized Children’s Programs – Special Classes				16,458.10
599 Other Miscellaneous Purchased Services				220.00
<b>Total Other Purchased Services</b>				<b>\$119,708.05</b>
<b>600 Supplies</b>				
610 General Supplies				5,077.91
<b>Total Supplies</b>				<b>\$5,077.91</b>
<b>700 Property</b>				
762 Capitalized Equipment - Replacement				579.00
<b>Total Property</b>				<b>\$579.00</b>
<b>800 Other Objects</b>				
810 Dues and Fees				8,094.29
<b>Total Other Objects</b>				<b>\$8,094.29</b>
<b>Total 2511 Supervision of Fiscal Services - Head of Component</b>				<b>\$559,615.38</b>



**General Fund (10)**

	<u>Elementary</u>	<u>Secondary</u>	<u>Federal</u>	<u>Total</u>
<b>2600 Operation and Maintenance of Plant Services</b>				
<b>100 Personnel Services – Salaries</b>				
100 Personnel Services – Salaries				524,914.07
<b>Total Personnel Services – Salaries</b>				<b>\$524,914.07</b>
<b>200 Personnel Services – Employee Benefits</b>				
210 Group Insurance – Contracted Provider				161,417.47
220 Social Security Contributions				39,448.65
230 PSERS Retirement Contributions				148,463.16
250 Unemployment Compensation				683.85
260 Workers' Compensation				2,834.00
<b>Total Personnel Services – Employee Benefits</b>				<b>\$352,847.13</b>
<b>300 Purchased Professional and Technical Services</b>				
330 Other Professional Services				12,327.55
<b>Total Purchased Professional and Technical Services</b>				<b>\$12,327.55</b>
<b>400 Purchased Property Services</b>				
410 Cleaning Services				51,558.30
420 Utility Services				206,380.51
430 Repairs and Maintenance Services				22,762.67
440 Rentals				1,553.56
<b>Total Purchased Property Services</b>				<b>\$282,255.04</b>
<b>500 Other Purchased Services</b>				
530 Communications				1,506.17
580 Travel				182.86
<b>Total Other Purchased Services</b>				<b>\$1,689.03</b>
<b>600 Supplies</b>				
610 General Supplies	44,358.48	62,713.03		107,071.51
620 Energy				81,457.62
<b>Total Supplies</b>	<b>\$44,358.48</b>	<b>\$62,713.03</b>		<b>\$188,529.13</b>
<b>700 Property</b>				
752 Capital Equipment – Original and Additional				17,254.08
762 Capitalized Equipment - Replacement				6,551.99
<b>Total Property</b>				<b>\$23,806.07</b>
<b>800 Other Objects</b>				
810 Dues and Fees				1,757.00
<b>Total Other Objects</b>				<b>\$1,757.00</b>
<b>Total 2600 Operation and Maintenance of Plant Services</b>	<b>\$44,358.48</b>	<b>\$62,713.03</b>		<b>\$1,388,125.02</b>

General Fund (10)

2610 Supervision of Operation and Maintenance of Plant Services

Elementary

Secondary

Federal

Total

100 Personnel Services – Salaries

100 Personnel Services – Salaries

80,061.85

**Total Personnel Services – Salaries**

**\$80,061.85**

200 Personnel Services – Employee Benefits

210 Group Insurance – Contracted Provider

14,166.48

220 Social Security Contributions

6,013.56

230 PSERS Retirement Contributions

23,475.97

250 Unemployment Compensation

41.94

260 Workers' Compensation

432.32

**Total Personnel Services – Employee Benefits**

**\$44,130.27**

800 Other Objects

810 Dues and Fees

20.00

**Total Other Objects**

**\$20.00**

**Total 2610 Supervision of Operation and Maintenance of Plant Services**

**\$124,212.12**

General Fund (10)

2611 Supervision of Operation and Maintenance of Plant Services – Head of Component

Elementary

Secondary

Federal

Total

100 Personnel Services – Salaries

100 Personnel Services – Salaries

80,061.85

**Total Personnel Services – Salaries**

**\$80,061.85**

200 Personnel Services – Employee Benefits

210 Group Insurance – Contracted Provider

14,166.48

220 Social Security Contributions

6,013.56

230 PSERS Retirement Contributions

23,475.97

250 Unemployment Compensation

41.94

260 Workers' Compensation

432.32

**Total Personnel Services – Employee Benefits**

**\$44,130.27**

800 Other Objects

810 Dues and Fees

20.00

**Total Other Objects**

**\$20.00**

**Total 2611 Supervision of Operation and Maintenance of Plant Services – Head of Component**

**\$124,212.12**

**General Fund (10)**

	<u>Elementary</u>	<u>Secondary</u>	<u>Federal</u>	<u>Total</u>
<b>2620 Operation of Buildings Services</b>				
<b>100 Personnel Services – Salaries</b>				
100 Personnel Services – Salaries				444,852.22
<b>Total Personnel Services – Salaries</b>				<b>\$444,852.22</b>
<b>200 Personnel Services – Employee Benefits</b>				
210 Group Insurance – Contracted Provider				147,250.99
220 Social Security Contributions				33,435.09
230 PSERS Retirement Contributions				124,987.19
250 Unemployment Compensation				641.91
260 Workers' Compensation				2,401.68
<b>Total Personnel Services – Employee Benefits</b>				<b>\$308,716.86</b>
<b>300 Purchased Professional and Technical Services</b>				
330 Other Professional Services				12,327.55
<b>Total Purchased Professional and Technical Services</b>				<b>\$12,327.55</b>
<b>400 Purchased Property Services</b>				
410 Cleaning Services				51,558.30
420 Utility Services				206,380.51
430 Repairs and Maintenance Services				22,762.67
440 Rentals				1,553.56
<b>Total Purchased Property Services</b>				<b>\$282,255.04</b>
<b>500 Other Purchased Services</b>				
530 Communications				1,506.17
580 Travel				182.86
<b>Total Other Purchased Services</b>				<b>\$1,689.03</b>
<b>600 Supplies</b>				
610 General Supplies	44,358.48	62,713.03		107,071.51
620 Energy				81,457.62
<b>Total Supplies</b>	<b>\$44,358.48</b>	<b>\$62,713.03</b>		<b>\$188,529.13</b>
<b>700 Property</b>				
752 Capital Equipment – Original and Additional				1,570.52
762 Capitalized Equipment - Replacement				6,551.99
<b>Total Property</b>				<b>\$8,122.51</b>
<b>800 Other Objects</b>				
810 Dues and Fees				1,737.00
<b>Total Other Objects</b>				<b>\$1,737.00</b>
<b>Total 2620 Operation of Buildings Services</b>	<b>\$44,358.48</b>	<b>\$62,713.03</b>		<b>\$1,248,229.34</b>

General Fund (10)

	<u>Elementary</u>	<u>Secondary</u>	<u>Federal</u>	<u>Total</u>
<b>2650 Vehicle Operation and Maintenance Services (Other Than Student Transportation Vehicles)</b>				
<b>700 Property</b>				
752 Capital Equipment – Original and Additional				15,683.56
<b>Total Property</b>				<b>\$15,683.56</b>
<b>Total 2650 Vehicle Operation and Maintenance Services (Other Than Student Transportation Vehicles)</b>				<b>\$15,683.56</b>

General Fund (10)

	<u>Elementary</u>	<u>Secondary</u>	<u>Federal</u>	<u>Total</u>
<b>2700 Student Transportation Services</b>				
<b>300 <u>Purchased Professional and Technical Services</u></b>				
330 Other Professional Services				1,152.00
<b>Total Purchased Professional and Technical Services</b>				<b>\$1,152.00</b>
<b>500 <u>Other Purchased Services</u></b>				
513 Contracted Carriers				1,397,561.31
516 Student Transportation Services From the IU				5,512.00
<b>Total Other Purchased Services</b>				<b>\$1,403,073.31</b>
<b>600 <u>Supplies</u></b>				
610 General Supplies				4,711.26
<b>Total Supplies</b>				<b>\$4,711.26</b>
<b>700 <u>Property</u></b>				
762 Capitalized Equipment - Replacement				10,007.25
<b>Total Property</b>				<b>\$10,007.25</b>
<b>Total 2700 Student Transportation Services</b>				<b>\$1,418,943.82</b>

General Fund (10)

2720 Vehicle Operation Services

Elementary

Secondary

Federal

Total

300 Purchased Professional and Technical Services

330 Other Professional Services

1,152.00

**Total Purchased Professional and Technical Services**

**\$1,152.00**

500 Other Purchased Services

513 Contracted Carriers

1,397,561.31

**Total Other Purchased Services**

**\$1,397,561.31**

600 Supplies

610 General Supplies

4,711.26

**Total Supplies**

**\$4,711.26**

700 Property

762 Capitalized Equipment - Replacement

10,007.25

**Total Property**

**\$10,007.25**

**Total 2720 Vehicle Operation Services**

**\$1,413,431.82**

General Fund (10)

2750 Nonpublic Transportation

Elementary

Secondary

Federal

Total

500 Other Purchased Services

516 Student Transportation Services From the IU

5,512.00

**Total Other Purchased Services**

**\$5,512.00**

**Total 2750 Nonpublic Transportation**

**\$5,512.00**



General Fund (10)

2800 Support Services – Central

Elementary

Secondary

Federal

Total

600 Supplies

610 General Supplies

8,760.40

**Total Supplies**

**\$8,760.40**

**Total 2800 Support Services – Central**

**\$8,760.40**

LEA : 117089003 Wyalusing Area SD

Printed 5/3/2018 2:34:33 PM

General Fund (10)

2830 Staff Services

Elementary

Secondary

Federal

Total

600 Supplies

610 General Supplies

8,760.40

**Total Supplies**

**\$8,760.40**

**Total 2830 Staff Services**

**\$8,760.40**

General Fund (10)

2833 Staff Accounting Services

Elementary

Secondary

Federal

Total

600 Supplies

610 General Supplies

8,760.40

**Total Supplies**

**\$8,760.40**

**Total 2833 Staff Accounting Services**

**\$8,760.40**

**General Fund (10)**

<b>3000 Operation of Non-Instructional Services</b>	<b><u>Total</u></b>
<b>100 <u>Personnel Services – Salaries</u></b>	
100 Personnel Services – Salaries	186,549.44
<b>Total Personnel Services – Salaries</b>	<b>\$186,549.44</b>
<b>200 <u>Personnel Services – Employee Benefits</u></b>	
210 Group Insurance – Contracted Provider	215.38
220 Social Security Contributions	14,273.39
230 PSERS Retirement Contributions	35,997.38
250 Unemployment Compensation	347.29
260 Workers’ Compensation	1,007.60
<b>Total Personnel Services – Employee Benefits</b>	<b>\$51,841.04</b>
<b>300 <u>Purchased Professional and Technical Services</u></b>	
330 Other Professional Services	22,177.25
<b>Total Purchased Professional and Technical Services</b>	<b>\$22,177.25</b>
<b>500 <u>Other Purchased Services</u></b>	
510 Student Transportation Services	49,545.78
580 Travel	339.58
<b>Total Other Purchased Services</b>	<b>\$49,885.36</b>
<b>600 <u>Supplies</u></b>	
610 General Supplies	54,175.50
<b>Total Supplies</b>	<b>\$54,175.50</b>
<b>Total 3000 Operation of Non-Instructional Services</b>	<b>\$364,628.59</b>

**General Fund (10)**

**3200 Student Activities**

	<u>Elementary</u>	<u>Secondary</u>	<u>Federal</u>	<u>Total</u>
<b>100 Personnel Services – Salaries</b>				
100 Personnel Services – Salaries				186,549.44
<b>Total Personnel Services – Salaries</b>				<b>\$186,549.44</b>
<b>200 Personnel Services – Employee Benefits</b>				
210 Group Insurance – Contracted Provider				215.38
220 Social Security Contributions				14,273.39
230 PSERS Retirement Contributions				35,997.38
250 Unemployment Compensation				347.29
260 Workers' Compensation				1,007.60
<b>Total Personnel Services – Employee Benefits</b>				<b>\$51,841.04</b>
<b>300 Purchased Professional and Technical Services</b>				
330 Other Professional Services				22,177.25
<b>Total Purchased Professional and Technical Services</b>				<b>\$22,177.25</b>
<b>500 Other Purchased Services</b>				
510 Student Transportation Services				49,545.78
580 Travel				339.58
<b>Total Other Purchased Services</b>				<b>\$49,885.36</b>
<b>600 Supplies</b>				
610 General Supplies				54,063.53
<b>Total Supplies</b>				<b>\$54,063.53</b>
<b>Total 3200 Student Activities</b>				<b>\$364,516.62</b>

LEA : 117089003 Wyalusing Area SD

Printed 5/3/2018 2:34:35 PM

General Fund (10)

3300 Community Services

600 Supplies

610 General Supplies

	<u>Elementary</u>	<u>Secondary</u>	<u>Federal</u>	<u>Total</u>
			111.97	111.97
<b>Total Supplies</b>			<b>\$111.97</b>	<b>\$111.97</b>
<b>Total 3300 Community Services</b>			<b>\$111.97</b>	<b>\$111.97</b>

**General Fund (10)**

**5000 Other Expenditures and Financing Uses**

**Total**

**800 Other Objects**

830 Interest 605,475.00

**Total Other Objects \$605,475.00**

**900 Other Uses of Funds**

910 Redemption of Principal 2,010,000.00

**Total Other Uses of Funds \$2,010,000.00**

**Total 5000 Other Expenditures and Financing Uses \$2,615,475.00**

General Fund (10)

	<u>Elementary</u>	<u>Secondary</u>	<u>Federal</u>	<u>Total</u>
<b>5100 Debt Service / Other Expenditures and Financing Uses</b>				
<b>800 Other Objects</b>				
830 Interest				605,475.00
<b>Total Other Objects</b>				<b>\$605,475.00</b>
<b>900 Other Uses of Funds</b>				
910 Redemption of Principal				2,010,000.00
<b>Total Other Uses of Funds</b>				<b>\$2,010,000.00</b>
<b>Total 5100 Debt Service / Other Expenditures and Financing Uses</b>				<b>\$2,615,475.00</b>



General Fund (10)

5110 Debt Service

Elementary

Secondary

Federal

Total

800 Other Objects

830 Interest

605,475.00

**Total Other Objects**

**\$605,475.00**

900 Other Uses of Funds

910 Redemption of Principal

2,010,000.00

**Total Other Uses of Funds**

**\$2,010,000.00**

**Total 5110 Debt Service**

**\$2,615,475.00**

**Capital Reserve Fund - § 1431 (32)**

**4000 Facilities Acquisition, Construction and Improvement Services**

Total

**300 Purchased Professional and Technical Services**

330 Other Professional Services

22,041.76

**Total Purchased Professional and Technical Services**

**\$22,041.76**

**600 Supplies**

610 General Supplies

8,993.54

**Total Supplies**

**\$8,993.54**

**Total 4000 Facilities Acquisition, Construction and Improvement Services**

**\$31,035.30**

Capital Reserve Fund - § 1431 (32)

4600 Existing Building Improvement Services

Elementary

Secondary

Federal

Total

300 Purchased Professional and Technical Services

330 Other Professional Services

22,041.76

**Total Purchased Professional and Technical Services**

**\$22,041.76**

600 Supplies

610 General Supplies

8,993.54

**Total Supplies**

**\$8,993.54**

**Total 4600 Existing Building Improvement Services**

**\$31,035.30**

	<u>General Fund(10)</u>	<u>Public Purpose Trust(27)</u>	<u>Other Compt Approved (28)</u>	<u>Athletic / Activity(29)</u>	<u>Capital Reserve (690, 1850)(31)</u>
<b>1000 Instruction</b>					
1100 Regular Programs - Elementary / Secondary	8,362,928.54				
1200 Special Programs - Elementary / Secondary	2,893,293.07				
1300 Vocational Education	861,223.48				
1400 Other Instructional Programs - Elementary / Secondary	20,491.69				
1500 Nonpublic School Programs	11,335.92				
<b>Total Instruction</b>	<b>\$12,149,272.70</b>				
<b>2000 Support Services</b>					
2100 Support Services - Students	868,981.61				
2200 Support Services - Instructional Staff	647,620.59				
2300 Support Services - Administration	1,106,455.39				
2400 Support Services - Pupil Health	197,615.90				
2500 Support Services - Business	559,615.38				
2600 Operation and Maintenance of Plant Services	1,388,125.02				
2700 Student Transportation Services	1,418,943.82				
2800 Support Services - Central	8,760.40				
<b>Total Support Services</b>	<b>\$6,196,118.11</b>				
<b>3000 Operation of Non-Instructional Services</b>					
3200 Student Activities	364,516.62				
3300 Community Services	111.97				
<b>Total Operation of Non-Instructional Services</b>	<b>\$364,628.59</b>				
<b>4000 Facilities Acquisition, Construction and Improvement Services</b>					
4600 Existing Building Improvement Services					
<b>Total Facilities Acquisition, Construction and Improvement Services</b>					
<b>5000 Other Expenditures and Financing Uses</b>					
5100 Debt Service / Other Expenditures and Financing Uses	2,615,475.00				
<b>Total Other Expenditures and Financing Uses</b>	<b>\$2,615,475.00</b>				
<b>TOTAL ACTUAL EXPENDITURES &amp; OTHER FINANCING USES</b>	<b>\$21,325,494.40</b>				

	<u>Capital Reserve (1431)(32)</u>	<u>Other Capital Projects Fund(39)</u>	<u>Debt Service(40)</u>	<u>Permanent(90)</u>	<u>Total</u>
<b>1000 Instruction</b>					
1100 Regular Programs - Elementary / Secondary					8,362,928.54
1200 Special Programs - Elementary / Secondary					2,893,293.07
1300 Vocational Education					861,223.48
1400 Other Instructional Programs - Elementary / Secondary					20,491.69
1500 Nonpublic School Programs					11,335.92
<b>Total Instruction</b>					<b>\$12,149,272.70</b>
<b>2000 Support Services</b>					
2100 Support Services - Students					868,981.61
2200 Support Services - Instructional Staff					647,620.59
2300 Support Services - Administration					1,106,455.39
2400 Support Services - Pupil Health					197,615.90
2500 Support Services - Business					559,615.38
2600 Operation and Maintenance of Plant Services					1,388,125.02
2700 Student Transportation Services					1,418,943.82
2800 Support Services - Central					8,760.40
<b>Total Support Services</b>					<b>\$6,196,118.11</b>
<b>3000 Operation of Non-Instructional Services</b>					
3200 Student Activities					364,516.62
3300 Community Services					111.97
<b>Total Operation of Non-Instructional Services</b>					<b>\$364,628.59</b>
<b>4000 Facilities Acquisition, Construction and Improvement Services</b>					
4600 Existing Building Improvement Services		31,035.30			31,035.30
<b>Total Facilities Acquisition, Construction and Improvement Services</b>		<b>\$31,035.30</b>			<b>\$31,035.30</b>
<b>5000 Other Expenditures and Financing Uses</b>					
5100 Debt Service / Other Expenditures and Financing Uses					2,615,475.00
<b>Total Other Expenditures and Financing Uses</b>					<b>\$2,615,475.00</b>
<b>TOTAL ACTUAL EXPENDITURES &amp; OTHER FINANCING USES</b>		<b>\$31,035.30</b>			<b>\$21,356,529.70</b>

**PSERS Salary Data (Salary Data should relate to the General Fund only)**

<b>Amount Description</b>	<b>Amount</b>
Total Salary Base for salaries subject to PSERS withholding	8,501,652.84
Total Federally Funded salaries subject to PSERS withholding	407,264.74
	<hr/>

**Title I Expenditure Data**

<b>Amount Description</b>	<b>Amount</b>
Expenditures Funded with Current Title I Funds	280,496.35
Expenditures Funded with Carry over Title I Funds	
<b>Total Title I Expenditure Data</b>	<hr/> <b>\$280,496.35</b> <hr/>

**Title I ARRA Amount**

<b>Amount Description</b>	<b>Amount</b>
Portion of Total Title I Expenditures funded with ARRA Title I	<hr/>

**Benefits for Staff Relative to Collective Bargaining Agreements**

	OBJECT	COVERED	NOT COVERED	TOTAL
<b>10 General Fund</b>				
	211 Medical Insurance	1,711,989.14		1,711,989.14
	212 Dental Insurance			
	215 Eye Care Insurance			
	216 Prescription Insurance			
	271 Self-Insurance Medical Benefits	16,091.65		16,091.65
	272 Self-Insurance Dental Benefits			
	275 Self-Insurance Eye Care Benefits			
	276 Self-Insurance Prescription Benefits			
		<b>FUND TOTAL</b>	<b>\$1,728,080.79</b>	
<b>50 Enterprise Fund</b>	No Self Insurance data to report			
	211 Medical Insurance			
	212 Dental Insurance			
	215 Eye Care Insurance			
	216 Prescription Insurance			
	271 Self-Insurance Medical Benefits			
	272 Self-Insurance Dental Benefits			
	275 Self-Insurance Eye Care Benefits			
	276 Self-Insurance Prescription Benefits			
		<b>FUND TOTAL</b>		
<b>60 Internal Service Fund</b>	No Self Insurance data to report			
	211 Medical Insurance			
	212 Dental Insurance			
	215 Eye Care Insurance			
	216 Prescription Insurance			
	271 Self-Insurance Medical Benefits			
	272 Self-Insurance Dental Benefits			
	275 Self-Insurance Eye Care Benefits			
	276 Self-Insurance Prescription Benefits			
		<b>FUND TOTAL</b>		
<b>Total of All Funds</b>		<b>\$1,728,080.79</b>		<b>\$1,728,080.79</b>

LEA : 117089003 Wyalusing Area SD

Printed 5/3/2018 2:34:49 PM

Function	Special Education (Prior Year)	Nonspecial Education (Prior Year)	Total (Prior Year)	Special Education (Current Year)	Nonspecial Education (Current Year)	Total (Current Year)
2120 Guidance Services		481,563.70	481,563.70		464,865.03	464,865.03
2140 Psychological Services	269,822.02		269,822.02	398,766.58		398,766.58
2150 Speech Pathology and Audiology Services						
2160 Social Work Services						
2260 Instruction and Curriculum Development Services		49,876.53	49,876.53		127,478.96	127,478.96
2350 Legal and Accounting Services		14,984.84	14,984.84		35,170.49	35,170.49
2420 Medical Services		178,276.59	178,276.59		197,614.90	197,614.90
2440 Nursing Services						
2700 Student Transportation Services		1,418,369.51	1,418,369.51		1,418,934.82	1,418,934.82
<b>Total</b>	<b>\$269,822.02</b>	<b>\$2,143,071.17</b>	<b>\$2,412,893.19</b>	<b>\$398,766.58</b>	<b>\$2,244,064.20</b>	<b>\$2,642,830.78</b>



(PRINCIPAL AMOUNTS ONLY)

**GOVERNMENTAL FUNDS/ ACTIVITIES**

	Short-Term Borrowing	General Obligation Bonds/Notes	Authority Building Obligations	Other Long-Term Debt	Other Post-Employment Benefits (OPEB)	Compensated Absences	Net Pension Liability	Total
1. Debt at Beginning of Fiscal Year		24,690,000.00				70,735.00	28,025,000.00	52,785,735.00
2. Additional Debt Incurred During Year						6,815.00	7,408,000.00	7,414,815.00
3. Retirements and Repayments		2,010,000.00						2,010,000.00
4. Debt at End of Fiscal Year		22,680,000.00				77,550.00	35,433,000.00	58,190,550.00
5. Accreted Interest at End Of Fiscal Year								
6. Total Debt and Accreted Interest		22,680,000.00				77,550.00	35,433,000.00	58,190,550.00
7. Current Portion P&I - Due within 1 year		2,609,495.00						2,609,495.00
8. Interest Paid during current fiscal year		605,475.00						605,475.00

(PRINCIPAL AMOUNTS ONLY)

**PROPRIETARY FUNDS**

- 1. Debt at Beginning of Fiscal Year
- 2. Additional Debt Incurred During Year
- 3. Retirements and Repayments
- 4. Debt at End of Fiscal Year
- 5. Accreted Interest at End Of Fiscal Year
- 6. Total Debt and Accreted Interest
- 7. Current Portion P&I - Due within 1 year
- 8. Interest Paid during current fiscal year

**Total Principal and Interest Payments Made by Your School - All Funds**

Function	Fund		Principal (910)	Principal (920)	Interest (830)	Total (Principal +Interest)	Misc Other Uses (990)
5110	10	General Fund	2,010,000.00		605,475.00	2,615,475.00	
5110	20	Special Revenue Funds					
5110	30	Capital Projects Funds					
5110	40	Debt Service Fund					
5110	90	Permanent Fund					
5120	10	General Fund					
5120	20	Special Revenue Funds					
5120	30	Capital Projects Funds					
5120	40	Debt Service Fund					

<b>Total Debt Payments - Governmental Funds</b>			<b>\$2,010,000.00</b>		<b>\$605,475.00</b>	<b>\$2,615,475.00</b>	
---	--	--	-----------------------	--	---------------------	-----------------------	--

Function	Fund		Principal (910)	Principal (920)	Interest (830)	Total (Principal +Interest)
5110	50	Enterprise Fund				
5110	60	Internal Service Fund				
5120	50	Enterprise Fund				
5120	60	Internal Service Fund				

<b>Total Debt Payments - Proprietary Funds</b>						
--	--	--	--	--	--	--

**Debt Details**  
**Governmental Funds/ Activities**

Debt Category	Debt Issue Date (MM/YYYY)	Principal Amounts Only			Debt at End of Fiscal Year	Current Portion Due Within One Year (Principal and Interest)	Interest Paid During Fiscal Year
		Debt at Beginning of Fiscal Year	Additions	Reductions / Repayments			
General Obligation Bonds/Notes – CIB	11/2015	4,370,000.00		400,000.00	3,970,000.00	497,575.00	95,575.00
General Obligation Bonds/Notes – CIB	01/2014	2,580,000.00		185,000.00	2,395,000.00	269,475.00	68,175.00
General Obligation Bonds/Notes – CIB	01/2014	3,375,000.00		120,000.00	3,255,000.00	213,055.00	110,455.00
General Obligation Bonds/Notes – CIB	12/2012	7,400,000.00		675,000.00	6,725,000.00	831,650.00	160,150.00
General Obligation Bonds/Notes – CIB	04/2012	6,965,000.00		630,000.00	6,335,000.00	797,740.00	171,120.00
Compensated Absences		70,735.00	6,815.00		77,550.00		
Net Pension Liability		28,025,000.00	7,408,000.00		35,433,000.00		
<b>Totals for Debt Entered:</b>		<b>\$52,785,735.00</b>	<b>\$7,414,815.00</b>	<b>\$2,010,000.00</b>	<b>\$58,190,550.00</b>	<b>\$2,609,495.00</b>	<b>\$605,475.00</b>

**General Fund (10)**

**Section 1: Tuition/Purchased Services as Reported within Expenditure Detail**

	<b>Amount</b>
Tuition Reported in General Fund Expenditures 1000-560	1,078,265.67
Purchased Services in General Fund Expenditures 1000-594 and 1000-597	

<b>Section 1 Total</b>	<b>\$1,078,265.67</b>
------------------------	-----------------------

**Section 2: Tuition Paid to Institution Types During Fiscal Year**

	<b>Tuition Paid For Nonspecial Education</b>	<b>Tuition Paid For Special Education</b>	<b>Total</b>
1 1306 Institutions			
2 Institutionalized Children's Programs			
3 Juveniles Incarcerated in Adult Facilities			
4 Residential Treatment Facilities	5,563.00		5,563.00
5 Other Local Education Agencies		32,084.00	32,084.00
6 Brick and Mortar Charter Schools			
7 Cyber Charter Schools	395,806.22	254,944.24	650,750.46
8 Career and Technology Centers	351,378.00		351,378.00
9 Approved Private Schools			
10 PA Chartered Schools for the Deaf and Blind			
11 Private Residential Rehabilitative Institutions			
12 Juvenile Detention Centers	8,621.00	6,782.00	15,403.00
13 Special Program Jointures			
14 Other Tuition Not Included Elsewhere In This Section	23,087.21		23,087.21
<b>Section 2 Total</b>	<b>\$784,455.43</b>	<b>\$293,810.24</b>	<b>\$1,078,265.67</b>

**Food Service / Cafeteria Operations Fund (51)**

**3000 Operation of Non-Instructional Services**

**Total**

**400 Purchased Property Services**

430 Repairs and Maintenance Services

7,537.00

**Total Purchased Property Services**

**\$7,537.00**

**600 Supplies**

630 Food

488,228.00

**Total Supplies**

**\$488,228.00**

**700 Property**

740 Depreciation

31,003.00

**Total Property**

**\$31,003.00**

**Total 3000 Operation of Non-Instructional Services**

**\$526,768.00**

**Food Service / Cafeteria Operations Fund (51)**

	<u>Elementary</u>	<u>Secondary</u>	<u>Federal</u>	<u>Total</u>
<b>3100 Food Services</b>				
<b>400 <u>Purchased Property Services</u></b>				
430 Repairs and Maintenance Services				7,537.00
<b>Total Purchased Property Services</b>				<b>\$7,537.00</b>
<b>600 <u>Supplies</u></b>				
630 Food				488,228.00
<b>Total Supplies</b>				<b>\$488,228.00</b>
<b>700 <u>Property</u></b>				
740 Depreciation				31,003.00
<b>Total Property</b>				<b>\$31,003.00</b>
<b>Total 3100 Food Services</b>				<b>\$526,768.00</b>

	<u>Food Service(51)</u>	<u>Child Care Operations(52)</u>	<u>Other Enterprise(58)</u>	<u>Internal Service(60)</u>	<u>Total</u>
<b>3000 <u>Operation of Non-Instructional Services</u></b>					
3100 Food Services	526,768.00				526,768.00
<b>Total Operation of Non-Instructional Services</b>	<b>\$526,768.00</b>				<b>\$526,768.00</b>
<b>TOTAL ACTUAL EXPENDITURES &amp; OTHER FINANCING USES</b>	<b>\$526,768.00</b>				<b>\$526,768.00</b>